

# Ex Proximity Switches

## Ex End Sensors

### ES34T/TH

- BASEEFA certified
- End sensing
- Magnetically actuated
  - See page 36 for actuators (supplied separately)
- Stainless steel housing
- Water, oil and dustproof to IP68
- For resistive or solid state circuits

Special conditions for use relevant to certification No.  
Baseefa 02ATEX 0183X

Must comply with the installation requirements as  
specified in EN60079-14.

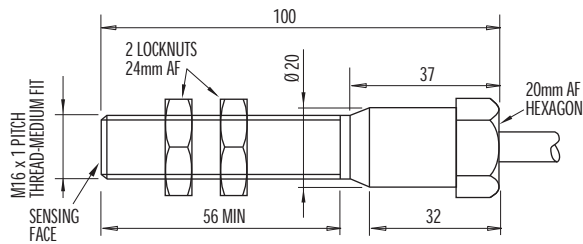
The remote end of the integral cable must be terminated  
in a connection facility suitable for the conditions of use.

Earthing should be provided by connection of a braid of  
the cable or by the mounting to adjacent metal work.

Consideration shall be given to the need for mechanical  
protection of the flexible cable integral with the apparatus.



## dimensions



## ordering details

Switch	Contact material	Max. volts	Max. current	Power	Part No.
ES 34T/TH	Tungsten	250V ac/dc	1.5A ac/dc	40W/VA (3W/VA min)	443S-M566221
	Rhodium	250V ac/dc	0.5A ac/dc	15W/VA	443S-M566231

These switches require a magnetic actuator. Refer to page 36.

## technical specifications

Contact arrangement	C/O single pole (change over)
Contact material	Tungsten or Rhodium
Case material	Stainless steel
Protection	IP 68 (water/oil/dust)
Operating temperature	-40°C to +125°C
Fixings	M16 threaded housing
Contact operating distance	See page 36
Mechanical life	500 x 10 <sup>6</sup> typical
Electrical life	Subject to switched load
Cable	3m Polyolefin 3 core copper braided Braid bonded to housing.
Connections	N/O black & white, N/C red & white.
Weight	0.35Kg approx.
Conforms to standards	EN 60204-1, EN 60079
Certification	Exd IIC T6 (Ta= -40+60°C), Exd II T3 (Ta= -40+125°C) Certification No. Baseefa 02ATEX 0183X

