

**Power Relay RM 8**

- 2 pole 25 A, 2 CO contacts
- DC- or AC-coil
- Mechanical indicator
- Push-to-test-button
- Chassis- or DIN-rail mount
- Versions with AgNi90/10 contact material: RoHS compliant (Directive 2002/95/EC)

**Applications**

Cleaning equipment, heating and cooling equipment



F0165-A

**Approvals**

VDE REG.-Nr. 40003144, **C** **RU** us E214025  
Technical data of approved types on request

Contact data	RM8
Contact configuration	2 CO contacts
Contact set	single contact
Type of interruption	micro disconnection
Rated current	25 A
Rated voltage / max.switching voltage AC	400 VAC
Maximum breaking capacity AC	6000 VA
Limiting making capacity, max 20 ms	60 A
Contact material	AgNi90/10, AgCdO
Mechanical endurance	10x10 <sup>6</sup> cycles
Rated frequency of operation with / without load	16/100 min <sup>-1</sup>

**Contact ratings**

Type	Load	Cycles
RM80	25 A, 415 VAC, 70°C, UL	10x10 <sup>3</sup>
RM80	25 A, 250 VAC, cosφ=1, 35°C, VDE	10x10 <sup>3</sup>
RM80	25 A, 240 VAC, 1-phase, per pole, general purpose, UL	6x10 <sup>3</sup>

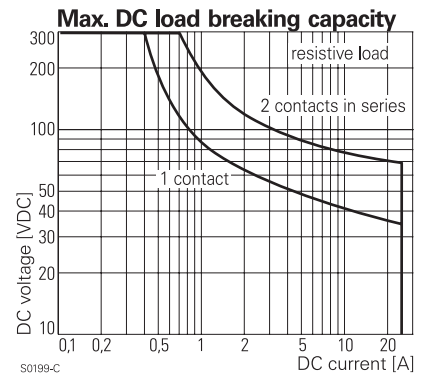
**Coil data**

Rated coil voltage range	DC coil	6...220 VDC
	AC coil	6...400 VAC
Coil power	DC coil	1.2 W
	AC coil	2.8 VA

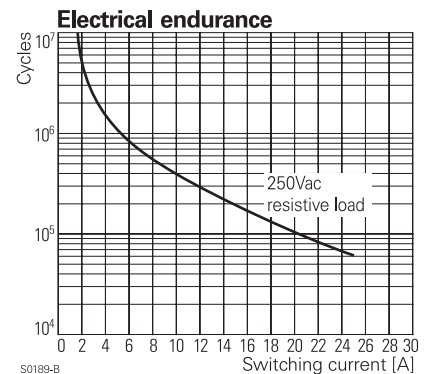
**Coil versions, DC-coil**

Coil code	Rated voltage VDC	Operate voltage VDC	Release voltage VDC	Coil resistance Ohm	Rated coil power W
STD LED PD* bipolar	LED+ PD*				
006 L06 OA6 LA6	6	4.5	0.6	32±10%	1.1
012 L12 OB2 LB2	12	9.0	1.2	110±10%	1.3
<b>024 L24 OC4 LC4</b>	<b>24</b>	<b>18.0</b>	<b>2.4</b>	<b>475±10%</b>	<b>1.2</b>
048 L48 OE8 LE8	48	36.0	4.8	2000±10%	1.2
060 L60 OG0 LG0	60	45.0	6.0	2850±10%	1.3
110 M10 1B0 MB0	110	82.5	11.0	10000±12%	1.2
221 N21 2C1 NC1	220	165.0	22.0	40000±15%	1.2

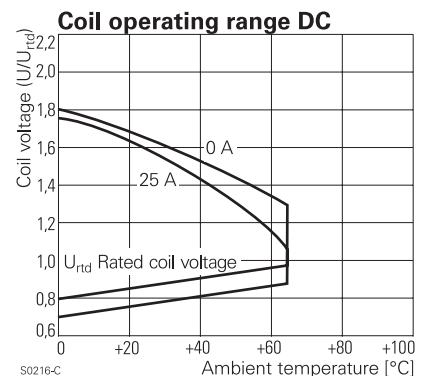
All figures are given for coil without preenergization, at ambient temperature +23°C  
\*) Protection diode PD; standard polarity: +A1 / -A2



S0199-C



S0189-B



S0216-C

**Coil versions, AC-coil 50/60 Hz**

Coil code	LED	Rated voltage VAC	Operate voltage 50/60Hz VAC	Release voltage 50/60Hz VAC	Coil resistance Ohm	Rated coil power 50/60Hz VA
506	R06	6	4.8	2.4	4.7±10%	2.86/2.36
512	R12	12	9.6	4.8	19.5±10%	2.71/2.27
<b>524</b>	<b>R24</b>	<b>24</b>	<b>19.2</b>	<b>9.6</b>	<b>80±10%</b>	<b>2.62/2.00</b>
548	R48	48	38.4	19.2	320±10%	2.60/2.17
560	R60	60	48.0	24.0	500±10%	2.62/2.20
615	S15	115	92.0	46.0	1850±10%	2.65/2.22
<b>730</b>	<b>T30</b>	<b>230</b>	<b>184.0</b>	<b>92.0</b>	<b>7500±10%</b>	<b>2.69/2.26</b>
900	V00	400	320.0	160.0	23500±15%	2.61/2.20

All figures are given for coil without preenergization, at ambient temperature +23°C

**Insulation**

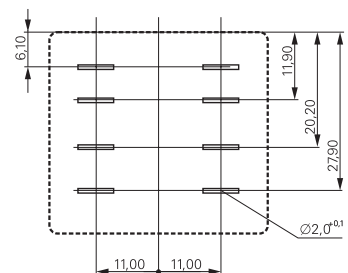
Dielectric strength coil-contact circuit	2500 V <sub>rms</sub>
open contact circuit	1500 V <sub>rms</sub>
adjacent contact circuits	4000 V <sub>rms</sub>
Clearance / creepage coil-contact circuit	≥ 4/14.9 mm
adjacent contact circuits	≥ 15.3/15.3 mm
Material group of insulation parts	≥ IIIa
Insulation to IEC 60664-1	
Type of insulation coil-contact circuit	basic
open contact circuit	functional
adjacent contact circuits	basic
Rated insulation voltage	250 V
Pollution degree	3
Rated voltage system	240/400 V
Overvoltage category	III

**Other data**

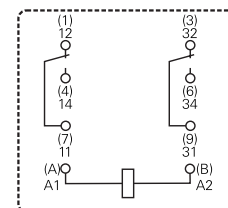
RoHS - Directive 2002/95/EC	
Versions with AgNi90/10 contacts:	compliant
Ambient temperature range DC coil	-45...+65°C
AC coil	-45...+40°C
Operate- / release time	15/15 ms
Bounce time NO / NC contact	3 ms
Vibration resistance (function) NO / NC contact	10/5 g, 30...150 Hz
Category of protection	RT1 - dust protected
Relay weight	81 g
Packaging unit	10/25 pcs

**Terminal assignment**

Bottom view



S0269-AG

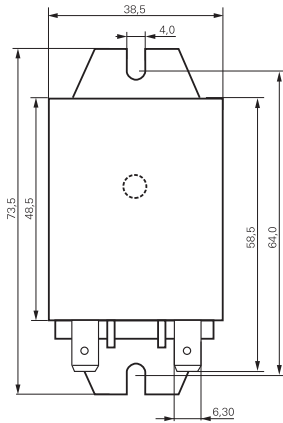


S0269-AD

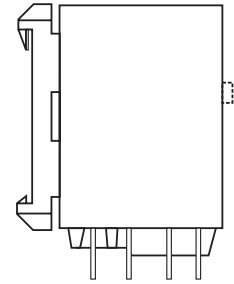
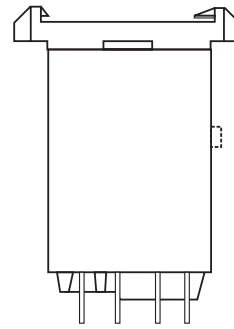
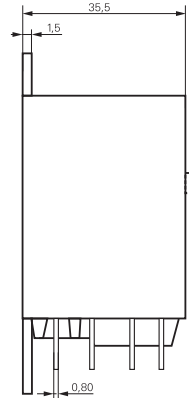
**Power Relay RM 8 (Continued)**

**Dimensions**

Cover with mounting brackets, 6.3 mm quick connect terminals



Cover with DIN-snap-on attachment  
horizontal vertical

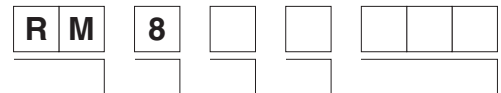


S0298-BC

S0298-BD

S0298-BE

**Product key**



Type

Contact configuration

**8** 2 CO contacts, 25 A

Version

**0** AgCdO, without test button      **3** AgCdO, with test button  
**2** AgNi 90/10, without test button      **7** AgNi 90/10, with test button

Enclosure

**5** cover with mounting brackets, 6.3 mm quick connect terminals  
**8** cover with DIN-snap-on attachment, horizontal, 6.3 mm quick connect terminals  
**9** cover with DIN-snap-on attachment, vertical, 6.3 mm quick connect terminals

Coil

Coil code: please refer to coil versions table, preferred types in bold print

Product key	Contacts	Version	Enclosure	Coil	Coil	Part number
RM805024	2 CO contacts 25 A	without test button	mounting brackets quick c. 6.3 mm	DC-coil	24 VDC	2-1393844-7
RM805524				AC-coil	24 VAC	2-1393147-9
RM805615					115 VAC	3-1393147-1
RM805730					230 VAC	3-1393147-3
RM808024			DIN-snap-on horizontal	DC-coil	24 VDC	2-1393844-9
RM808524				AC-coil	24 VAC	3-1393147-7
RM808730					230 VAC	5-1393149-7
RM809024			DIN-snap-on vertical	DC-coil	24 VDC	5-1393149-8
RM809615				AC-coil	115 VAC	3-1393147-8
RM809730					230 VAC	3-1393147-9
RM835024		with test button	mounting brackets quick c. 6.3 mm	DC-coil	24 VDC	4-1393147-1
RM835524				AC-coil	24 VAC	4-1393147-3
RM835615					115 VAC	4-1393147-4
RM835730					230 VAC	4-1393147-6
RM838024			DIN-snap-on horizontal	DC-coil	24 VDC	4-1393147-8
RM838524				AC-coil	24 VAC	5-1393147-0
RM838730					230 VAC	5-1393147-1
RM839024			DIN-snap-on vertical	DC-coil	24 VDC	5-1393147-4
RM839524				AC-coil	24 VAC	5-1393147-5
RM839730					230 VAC	5-1393147-6