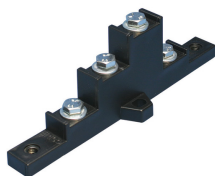
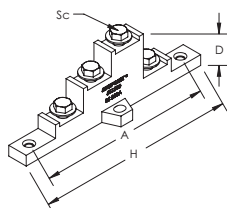


# BS-250A Four Pole Insulating Support



- Create custom four pole distribution blocks for an electrical distribution system
- Mounts with screws
- Protection screen can be fixed using spacers
- Halogen free
- RoHS compliant



Material: Glass Fibre Reinforced Polyamide, Steel  
 Finish: Electrogalvanized  
 Max Working Voltage, IEC (Ui): 630 VAC, 630 VDC  
 Working Temperature: -40 to 130 °C  
 Typical Application Current Rating: 160 – 250 A  
 Complies With: IEC® 60439.1, IEC® 61439.1  
 Flammability Rating: UL® 94V-0



Part Number	Article Number	Busbar Width	Busbar Thickness	Depth D	Height H	A	Screw Diameter Sc	Unit Weight
BS-250A	551300	15 – 20 mm	5 mm	45 mm	150 mm	130 mm	M6	0.05 kg

Must be used with copper busbars.

IEC is a registered trademark of the International Electrotechnical Commission. UL, UR, cUL, cUR, cULus and cURus are registered certification marks of UL LLC.

#### WARNING

ERICO products shall be installed and used only as indicated in ERICO's product instruction sheets and training materials. Instruction sheets are available at [www.erico.com](http://www.erico.com) and from your ERICO customer service representative. Improper installation, misuse, misapplication or other failure to completely follow ERICO's instructions and warnings may cause product malfunction, property damage, serious bodily injury and death.

Copyright © 2015 ERICO International Corporation. All rights reserved.

CADDY, CADWELD, CRITEC, ERICO, ERIFLEX, ERITECH, and LENTON are registered trademarks of ERICO International Corporation.

