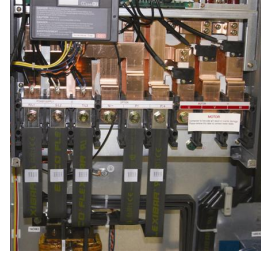
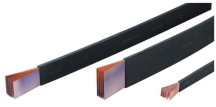
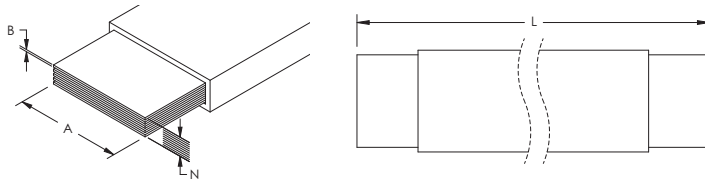


ERICO® FLEXIBAR®, Red Copper



- Thin layers of bare electrolytic copper formed into a stack
- Full range from 19.5 mm² up to 1200 mm² and 125 A to 2800 A
- Insulated by high-resistance, self-extinguishing PVC with less than 20% contact with conductor for high flexibility
- Easily bent, folded, and twisted, improving assembly flexibility, shortening connections, and decreasing footprint
- Dramatically smaller and more flexible than comparable cable based on ampacity
- Better power density than cable with lower skin effect ratio
- Connections made by punching and bolting directly through the copper laminates, clamping onto the end of the ERICO® FLEXIBAR®, or welding using ERICO® CADWELD®
- No lugs needed, reducing installation time and improving resistance to vibration
- Weight savings and material savings compared to wire alternatives
- Reduces total installation cost
- Traceability codes and designation part numbers printed on insulation
- 100% production dielectric tested
- UL 758 Appliance Wiring Material requirements for Cold Bend testing at -40°C and -50°C (-40°F and -58°F)
- GOST compliant
- RoHS compliant



Material: Copper, Polyvinylchloride
 Dielectric Strength: 20 kV/mm
 Flammability Rating: UL® 94V-0
 Insulation Elongation: 370 %
 Insulation Thickness: 2 mm
 Nominal Voltage, UL/IEC: 1,000 VAC, 1,500 VDC
 Working Temperature: -40 to 105 °C
 Forming Temperature: 0 – 55 °C
 Certification Details: UL® 67, UL® 758
 Complies With: IEC® 60439.1, IEC® 61439.1, IEC® 61439.1 Class II



Part Number	Article Number	L (m)	ΔT 40 K (A)	ΔT 50 K (A)	ΔT 60 K (A)	N	A (mm)	B (mm)	Cross Section (mm ²)	2 Bar Current Coefficient	3 Bar Current Coefficient
Typical Application Current Rating: 125 A											
FLEX2MRC3X9	552410	2	120	134	147	3	9.0	0.8	21.6	1.72	2.25
FLEX2MRC8X6	552400	2	143	166	182	8	6.0	0.5	24.0	1.72	2.25
FLEX2MRC3X13	552440	2	150	167	184	3	13.0	0.5	19.5	1.72	2.25
FLEX2MRC2X15-5	552390	2	191	212	234	2	15.5	0.8	24.8	1.72	2.25
FLEX2MRC6X9	552420	2	220	245	269	6	9.0	0.8	43.2	1.72	2.25
FLEX3MRC6X9X0-8	541020	3	220	245	269	6	9.0	0.8	43.2	1.72	2.25



Part Number	Article Number	L (m)	ΔT 40 K (A)	ΔT 50 K (A)	ΔT 60 K (A)	N	A (mm)	B (mm)	Cross Section (mm ²)	2 Bar Current Coefficient	3 Bar Current Coefficient
Typical Application Current Rating: 250 A											
FLEX2MRC6X13	552450	2	226	253	277	6	13.0	0.5	39.0	1.72	2.25
FLEX2MRC9X9	552430	2	237	265	291	9	9.0	0.8	64.8	1.72	2.25
FLEX2MRC2X20X1	552490	2	246	275	300	2	20.0	1.0	40.0	1.72	2.25
FLEX2MRC4X15-5	552460	2	286	320	350	4	15.5	0.8	49.6	1.72	2.25
FLEX2MRC3X20X1	552500	2	323	360	395	3	20.0	1.0	60.0	1.72	2.25
FLEX2MRC2X24X1	552550	2	340	380	416	2	24.0	1.0	48.0	1.72	2.25
FLEX3MRC2X20X1	541090	3	246	275	300	2	20.0	1.0	40.0	1.72	2.25
FLEX3MRC4X15-5	541060	3	286	320	350	4	15.5	0.8	49.6	1.72	2.25
FLEX3MRC3X20X1	541100	3	323	360	395	3	20.0	1.0	60.0	1.72	2.25
FLEX3MRC2X24X1	541150	3	340	380	416	2	24.0	1.0	48.0	1.72	2.25
Typical Application Current Rating: 400 A											
FLEX2MRC4X20X1	552510	2	360	402	440	4	20.0	1.0	80.0	1.72	2.25
FLEX2MRC6X15-5	552470	2	360	402	440	6	15.5	0.8	74.4	1.72	2.25
FLEX2MRC2X32X1	552620	2	363	406	445	2	32.0	1.0	64.0	1.72	2.25
FLEX2MRC3X24X1	552560	2	370	413	453	3	24.0	1.0	72.0	1.72	2.25
FLEX2MRC5X20X1	552520	2	376	420	460	5	20.0	1.0	100.0	1.72	2.25
FLEX2MRC2X40X1	552690	2	406	455	500	2	40.0	1.0	80.0	1.72	2.25
FLEX2MRC10X15-5	552480	2	407	455	498	10	15.5	0.8	124.0	1.72	2.25
FLEX2MRC6X20X1	552530	2	413	462	506	6	20.0	1.0	120.0	1.72	2.25
FLEX2MRC4X24X1	552570	2	416	465	510	4	24.0	1.0	96.0	1.72	2.25
FLEX2MRC3X32X1	552630	2	430	480	525	3	32.0	1.0	96.0	1.72	2.25
FLEX3MRC4X20X1	541110	3	360	402	440	4	20.0	1.0	80.0	1.72	2.25
FLEX3MRC6X15-5	541070	3	360	402	440	6	15.5	0.8	74.4	1.72	2.25
FLEX3MRC3X24X1	541160	3	370	413	453	3	24.0	1.0	72.0	1.72	2.25
FLEX3MRC4X24X1	541170	3	416	465	510	4	24.0	1.0	96.0	1.72	2.25
FLEX3MRC3X32X1	541230	3	430	480	525	3	32.0	1.0	96.0	1.72	2.25
Typical Application Current Rating: 500 A											
FLEX2MRC5X24X1	552580	2	460	514	563	5	24.0	1.0	120.0	1.72	2.25
FLEX2MRC3X40X1	552700	2	466	522	570	3	40.0	1.0	120.0	1.72	2.25
FLEX2MRC4X32X1	552640	2	490	548	600	4	32.0	1.0	128.0	1.72	2.25
FLEX2MRC6X24X1	552590	2	506	566	620	6	24.0	1.0	144.0	1.72	2.25
FLEX2MRC3X50X1	552760	2	530	592	650	3	50.0	1.0	150.0	1.72	2.25
FLEX2MRC4X40X1	552710	2	550	615	673	4	40.0	1.0	160.0	1.72	2.25
FLEX3MRC5X24X1	541180	3	460	514	563	5	24.0	1.0	120.0	1.72	2.25
FLEX3MRC4X32X1	541240	3	490	548	600	4	32.0	1.0	128.0	1.72	2.25
Typical Application Current Rating: 630 A											
FLEX2MRC5X32X1	552650	2	573	640	702	5	32.0	1.0	160.0	1.72	2.25
FLEX2MRC10X20X1	552540	2	576	645	706	10	20.0	1.0	200.0	1.72	2.25
FLEX2MRC8X24X1	552600	2	606	678	743	8	24.0	1.0	192.0	1.72	2.25
FLEX2MRC6X32X1	552660	2	640	715	783	6	32.0	1.0	192.0	1.72	2.25
FLEX2MRC4X50X1	552770	2	650	727	795	4	50.0	1.0	200.0	1.72	2.25
FLEX2MRC5X40X1	552720	2	680	760	832	5	40.0	1.0	200.0	1.72	2.25
FLEX3MRC5X32X1	541250	3	573	640	702	5	32.0	1.0	160.0	1.72	2.25
FLEX3MRC6X32X1	541260	3	640	715	783	6	32.0	1.0	192.0	1.72	2.25
FLEX3MRC5X40X1	541320	3	680	760	832	5	40.0	1.0	200.0	1.72	2.25



Part Number	Article Number	L (m)	ΔT 40 K (A)	ΔT 50 K (A)	ΔT 60 K (A)	N	A (mm)	B (mm)	Cross Section (mm ²)	2 Bar Current Coefficient	3 Bar Current Coefficient
Typical Application Current Rating: 800 A											
FLEX2MRC10X24X1	552610	2	716	800	877	10	24.0	1.0	240.0	1.72	2.25
FLEX2MRC3X80X1	552880	2	740	827	906	3	80.0	1.0	240.0	1.65	2.12
FLEX2MRC4X63X1	552830	2	763	855	935	4	63.0	1.0	252.0	1.65	2.12
FLEX2MRC6X40X1	552730	2	770	860	943	6	40.0	1.0	240.0	1.72	2.25
FLEX2MRC8X32X1	552670	2	770	860	943	8	32.0	1.0	256.0	1.72	2.25
FLEX2MRC5X50X1	552780	2	830	930	1,016	5	50.0	1.0	250.0	1.72	2.25
FLEX3MRC8X32X1	541270	3	770	860	943	8	32.0	1.0	256.0	1.72	2.25
FLEX3MRC5X50X1	541380	3	830	930	1,016	5	50.0	1.0	250.0	1.72	2.25
Typical Application Current Rating: 1,000 A											
FLEX2MRC4X80X1	552890	2	906	1,015	1,110	4	80.0	1.0	320.0	1.65	2.12
FLEX2MRC5X63X1	552840	2	920	1,030	1,125	5	63.0	1.0	315.0	1.65	2.12
FLEX2MRC6X50X1	552790	2	925	1,035	1,135	6	50.0	1.0	300.0	1.72	2.25
FLEX2MRC8X40X1	552740	2	930	1,040	1,140	8	40.0	1.0	320.0	1.72	2.25
FLEX2MRC10X32X1	552680	2	930	1,040	1,140	10	32.0	1.0	320.0	1.72	2.25
FLEX2MRC5X80X1	552900	2	1,050	1,175	1,285	5	80.0	1.0	400.0	1.65	2.12
FLEX2MRC8X50X1	552800	2	1,050	1,175	1,290	8	50.0	1.0	400.0	1.72	2.25
FLEX2MRC10X40X1	552750	2	1,055	1,181	1,295	10	40.0	1.0	400.0	1.72	2.25
FLEX2MRC6X63X1	552850	2	1,085	1,215	1,330	6	63.0	1.0	378.0	1.65	2.12
Typical Application Current Rating: 1,250 A											
FLEX2MRC6X80X1	552910	2	1,230	1,375	1,505	6	80.0	1.0	480.0	1.65	2.12
FLEX2MRC5X100X1	552950	2	1,235	1,385	1,515	5	100.0	1.0	500.0	1.60	2.02
FLEX2MRC8X63X1	552860	2	1,245	1,395	1,525	8	63.0	1.0	504.0	1.65	2.12
FLEX2MRC10X50X1	552810	2	1,245	1,395	1,525	10	50.0	1.0	500.0	1.72	2.25
FLEX2MRC6X100X1	552960	2	1,393	1,550	1,705	6	100.0	1.0	600.0	1.60	2.02
Typical Application Current Rating: 1,600 A											
FLEX2MRC8X80X1	552920	2	1,430	1,600	1,755	8	80.0	1.0	640.0	1.65	2.12
FLEX2MRC10X63X1	552870	2	1,435	1,600	1,755	10	63.0	1.0	630.0	1.65	2.12
FLEX2MRC10X80X1	552930	2	1,585	1,775	1,945	10	80.0	1.0	800.0	1.65	2.12
FLEX2MRC8X100X1	552970	2	1,625	1,815	1,990	8	100.0	1.0	800.0	1.60	2.02
FLEX2MRC10X100	552980	2	1,775	1,985	2,170	10	100.0	1.0	1,000.0	1.60	2.02
FLEX2MRC12X100	552990	2	1,890	2,115	2,315	12	100.0	1.0	1,200.0	1.60	2.02
FLEX2MRC10X120	538650	2	2,070	2,330	2,550	10	120.0	1.0	1,200.0	1.49	1.95

ADMISSIBLE CURRENTS: This table indicates the temperature rise produced by chosen current in the given section. This calculation does not take into account the heat dissipation from the switch gear.

ΔT = Temperature of conductors – Internal temperature of panel.

Refer to technical documentation for additional ampacity ratings.

ABS is a registered certification mark of American Bureau of Shipping. IEC is a registered trademark of the International Electrotechnical Commission. UL, UR, cUL, cUR, cULUS and cURUS are registered certification marks of UL LLC.

WARNING

ERICO products shall be installed and used only as indicated in ERICO's product instruction sheets and training materials. Instruction sheets are available at www.erico.com and from your ERICO customer service representative. Improper installation, misuse, misapplication or other failure to completely follow ERICO's instructions and warnings may cause product malfunction, property damage, serious bodily injury and death.

Copyright © 2015 ERICO International Corporation. All rights reserved.

CADDY, CADWELD, CRITEC, ERICO, ERIFLEX, ERITECH, and LENTON are registered trademarks of ERICO International Corporation.

