

Stainless Steel Guard Locking Switch - Type: HYGIELOCK KL3-SS



Solenoid Locking Interlock Safety Switches featuring Guard Holding up to 2000N. (200Kg.)

HYGIELOCK

The KL3-SS Series Guard Locking switches have a rugged Stainless Steel 316 body and have been developed with a holding force of 2000N. to keep medium to large Guard Doors closed until hazards have been removed.

They are designed in accordance with EHEDG guidelines for hygienic design (EHEDG European Hygienic Engineering & Design Group). The mirror-polished surface to Ra10 is designed to cope with direct food splash and cleaning found in the tough applications of the Food Processing Industries. They have IP69K enclosure protection and can be high pressure hosed with detergent at high temperature.

They have a slim body design under 50mm wide and can be fitted to 50mm (2in.) frame sections or to applications where space is restricted. The Head will rotate to provide up to 8 actuator entry positions.

2 Manual override points are provided (by using anti-tamper key).

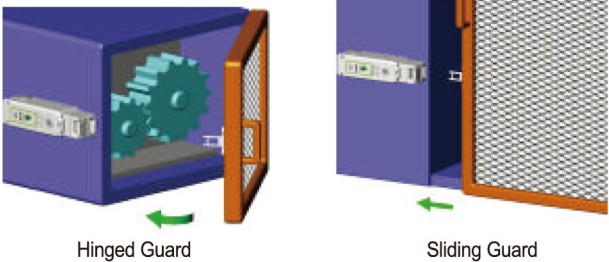
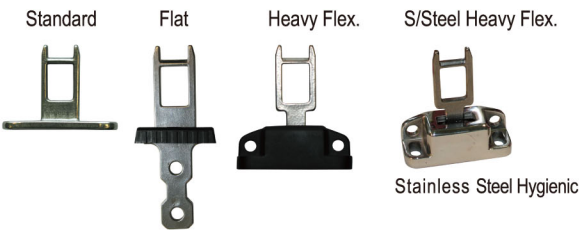
A unique mechanical design featuring 2 independent contact blocks gives a high function and diagnostic specification:

- 4NC Safety Contacts
- 1NO Auxiliary Contact (Guard open)
- LED1 Solenoid Power
- LED2 Lock Status indication or 1NO Auxiliary Contact (Lock Open)



Spring to lock when actuator is inserted. Energise solenoid to unlock.

Actuator options (See Page 51)



Functional Specification:

Positive break contacts to IEC 60947-5-1

High Functional Safety to ISO 13849-1

4NC Safety Contacts independently selectable

Stainless 316 Housings – Mirror Polished Finish to Ra10

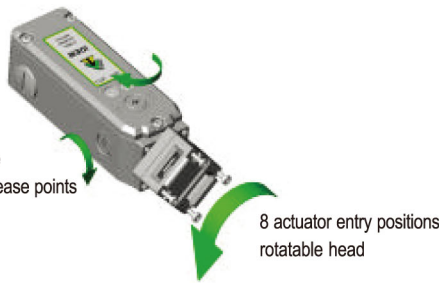
Connects to most Safety Relays to give up to PLe Cat.4.

IP69K Suitable for SIP and CIP processes

Standards EN1088 IEC 60947-5-1 EN 60204-1
ISO 13849-1 EN62061 EN 954-1 UL508

Safety Classification and Reliability Data:

Mechanical Reliability B10d	2.5 x 10 ⁶ operations at 100mA load
EN 954-1	up to Category 4 with Safety Relay
ISO 13849-1	up to PLe depending upon system architecture
EN 62061	up to SIL3 depending upon system architecture
Safety Data - Annual Usage	8 cycles per hour / 24 hours per day / 365 days
PFHd	3.44 x 10 ⁻⁸
Proof Test Interval (Life)	35 years
MTTFd	356 years
Solenoid Voltage (by part number)	24V ac/dc or 110V. ac or 230V. ac
Solenoid Wattage	12W.
LED 2 Supply Voltage	24V dc
Utilization Category	AC15 A300 3A.
Thermal Current (Ith)	5A
Rated Insulation / Withstand Voltages	600VAC / 2500 VAC
Travel for Positive Opening	10mm
Actuator entry minimum radius	175mm Standard 100mm Heavy Duty
Maximum Approach / Withdrawal speed	600mm/s.
Body Material	Stainless Steel 316
Enclosure Protection	IP69K / IP67
Operating Temperature	-25C. 55C.
Vibration	IEC 68-2-6, 10-55Hz+1Hz, Excursion: 0.35mm, 1 octave/min
Conduit Entry Fixing	Various (See Sales Part Numbers) 4 x M5



Actuator insertion

6.0 5.0 0 mm

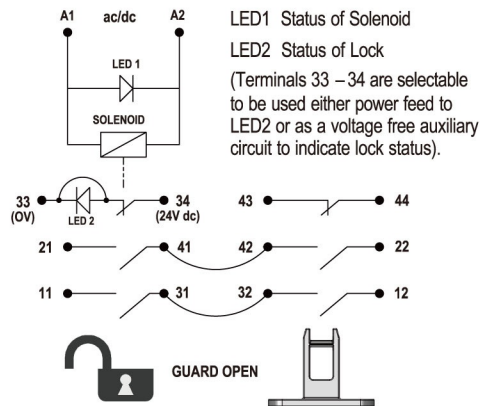
11/12	Open	
21/22	Open	
33/34		Open
43/44		Open

For all IDEM switches the normally closed (NC) circuits are closed when the guard is closed actuator inserted.

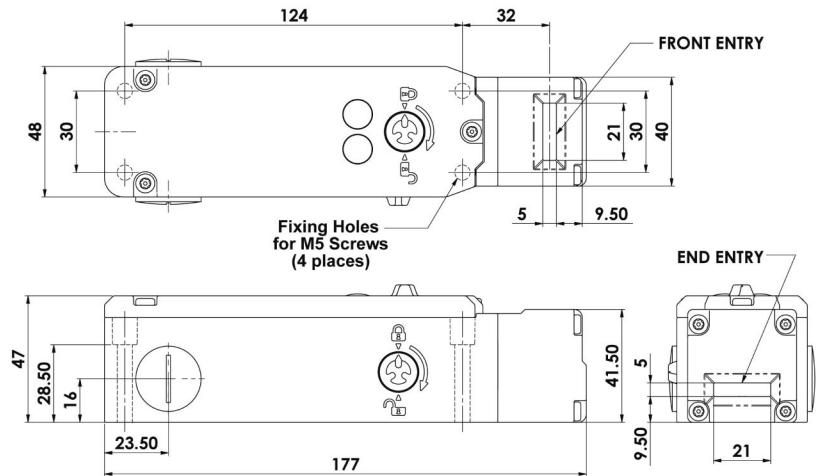
Stainless Steel Guard Locking Switch - Type: HYGIELOCK KL3-SS



Schematic circuit:

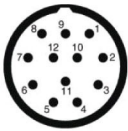


Dimensions:



Related Products and Accessories: (See Page 50)

QC Quick Connect M23
Connector Length 24mm



Rear Manual Release version



Rear Push Button Manual release versions provides a means of escape from inside the guarded area.

Maintenance Lockout Actuator - Fits to switch aperture and provides multiple padlock holes.

Quick Connect (QC) M23 12 way Male Plug (Pin view from switch)	Switch Circuit
1 3	A1 A2
4 6	11 / 12
7 8	21 / 22
2 5	43 / 44
9	33
10	34
Earth	12

Female QC Leads	Length	Sales Number
M23 12 Way	5m. (15Ft.)	140143
M23 12 Way	10m. (30Ft.)	140144



It is recommended to use our stainless steel gland with this switch

Gland	stainless steel 316
M20	140120
1/2"NPT	140121



			Standard Manual Release Lid and Side			Manual Release Lid only (not Side)			No Manual Release fitted (Blanked)		
Sales Numbers	Solenoid Voltage		M20	1/2"NPT	QC M23	M20	1/2"NPT	QC M23	M20	1/2"NPT	QC M23
Kobra KL3-SS Switch	24V. ac/dc		205001	205002	205003	205401	205402	205403	205301	205302	209303
Kobra KL3-SS Switch	110V. ac		205004	205005	205006	205404	205405	205406	205304	205305	209306
Kobra KL3-SS Switch	230V. ac		205007	205008	205009	205407	205408	205409	205307	205308	209309
Kobra Actuator	Standard		Add A to Sales Part Number								
Kobra Actuator	Flat		Add F to Sales Part Number								
Kobra Actuator	Heavy Duty Flexible		Add HF to Sales Part Number								
Kobra Actuator	S/Steel Heavy Duty Flexible		Add HFH to Sales Part Number								
Manual Release Key (order separately - not supplied with switches)			ORDERING EXAMPLES:								
Part No.140123			24V Solenoid M20 Conduit Standard Manual Release Flat Actuator - Part No. 205001-F								
			110V Solenoid 1/2"NPT Conduit No Manual Release Standard Actuator - Part No. 205305-A								