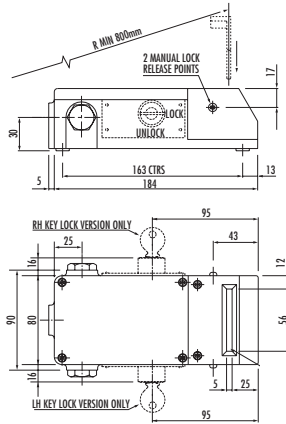
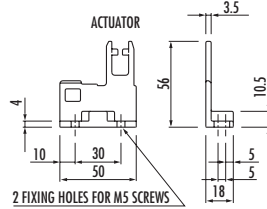
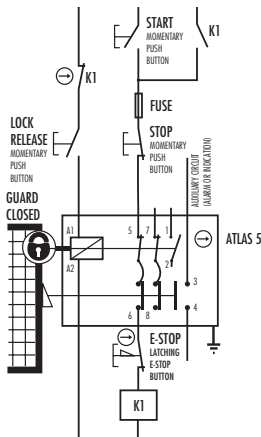


**Locking Guard Switch
'Atlas 5', 5500N Force**



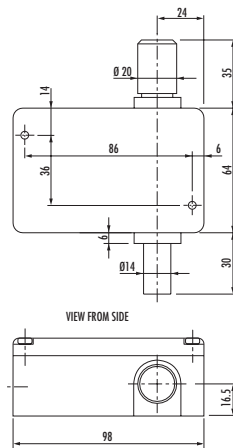
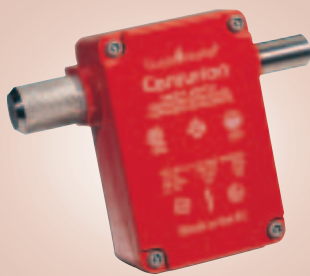
The Atlas 5 is a heavy duty machine guard locking interlock switch. It is designed to prevent access to areas where hazardous machinery is in operation. It locks the guard closed with up to 5500N of locking force until the machine power is isolated and ensures that the machine remains isolated whilst the guard is open. In operation (machine running), the Atlas 5 remains in the locked position until the internal solenoid is energised. The Atlas 5 has two actuator entry points and is supplied with a blanking plug for the unused entry. It is ideal for machines that do not stop immediately or where premature interruption of the machine could cause damage to tooling and components or cause an additional hazard. The Atlas 5 is available with 2 N/C safety contacts and 1 N/O auxiliary contact in three different voltages. They are particularly suitable for use with PLC controlled machines. Supplied with standard actuator.

- Contact arrangement 2 N/C (safety), 1 N/O (auxiliary)
- Contact rating 1 A at 500VAC, 2A at 250VAC, 5A at 100VAC
2 A at 24 Vdc
- Solenoid voltages 24V ac/dc, 110V ac, 230V ac
- Temperature -10°C to + 60°C
- IP Rating IP65
- Locking force 5500 N
- Housing material Die cast alloy
- Actuator material Stainless steel
- Built in LED Solenoid status indicator
- Conduit entry 3 x M20
- Approvals UL, SUVA, AB, CSA



Stock No.	Manf Ref'	Type	Unit Price		
			1-4	5-9	10-24
5105577	440G-L07264	24V AC/DC	151.00	147.23	143.45
5105574	440G-L07263	110V AC	200.00	195.00	190.00
5105571	440G-L07262	230V AC	200.00	195.00	190.00
5105478	440G-A07136	SPARE STANDARD ACTUATOR	31.00	30.23	29.45

**Locking Bolt Switch
'Centurion'**



The Centurion is a positive-mode, thumb wheel operated, machine guard locking, interlocking switch. It offers an economic solution for problems with machinery continuing to run-on after isolation of power. The action of retracting the shaft firstly, isolates the power to the machine and secondly, due to the time generated by the operating principle, gives up to 20 seconds delay before the guard can be opened. It is ideal for most motor driven machinery of low or medium inertia to come to a standstill. The Centurion offers 2 N/C safety contacts and 1 N/O auxiliary contact, housed in a robust die-cast alloy making it suitable for heavy duty applications. Available in left or right versions. Extended bolt (for extra time delay) and Ex versions are available.

- Contact arrangement 2 N/C (safety), 1 N/O (auxiliary)
- Contact rating 1 A at 500VAC, 2A at 250VAC, 5A at 100VAC
2 A at 24 Vdc
- Shaft movement 2mm (for contact operation)
- Temperature -25°C to + 80°C
- IP Rating IP65
- Housing material Die cast alloy
- Shaft material Stainless steel
- Conduit entry 1 x M20
- Conforms to standards EN60947-5-1, EN1088, EN292, EN60204-1
- Approvals AB, SUVA

Stock No.	Manf Ref'	Type	Unit Price		
			1-4	5-9	10-24
5105397	440K-B04025	RIGHT HAND	48.00	46.80	45.60
5105400	440K-B04026	LEFT HAND	71.00	69.23	67.45

< 29