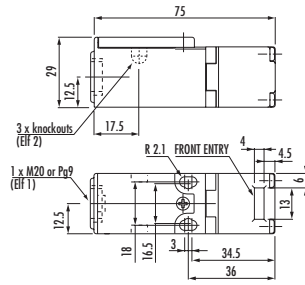


Miniature Safety Switch, 'Elf'

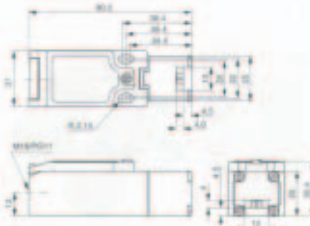


The Elf is a miniature tongue operated safety interlock switch designed to fit the leading edge of sliding door, hinged or lift off guards. With its dual entry slots and rotatable head, the Elf can offer up to 8 different actuator entry options. Conduit entry via M16. Supplied with actuator. Option add on Metal GD2 kit for rugged use.

Contact arrangement 1N/C+1N/O or 2N/C BBM
 Contact thermal rating 10A Max, 5mA min at 5V
 Contact rating AC-15 1.4A (500Vac), 6A (120Vac)
 Temperature -20 to +80 Deg C
 IP rating IP67
 Housing material Glass filled polyester
 Approvals UL, CE
 Dimensions mm 75 x 25 x 29

Stock No.	Manf Ref'	Type	Unit Price		
			1-4	5-9	10-24
5106495	440K-E33036	1 N/C+1 N/O INC FLAT ACT	15.00	14.63	14.25
5106501	440K-E33040	1 N/C+1 N/O INC 90 DEG ACT	15.00	14.63	14.25
5106504	440K-E33080	2 N/C INC FLAT ACT	27.00	26.33	25.65
5106674	440K-E33041	2 N/C INC 90 DEG ACT	27.00	26.33	25.65
5105994	440K-A21014	SPARE FLAT ACTUATOR	3.00	2.93	2.85
5105991	440K-A21006	SPARE 90 DEG ACTUATOR	3.00	2.93	2.85
5106507	440K-A21030	GD2 KIT INC FLEXIBLE ACTUATOR	9.00	8.78	8.55

Miniature Safety Switch, 'Cadet'

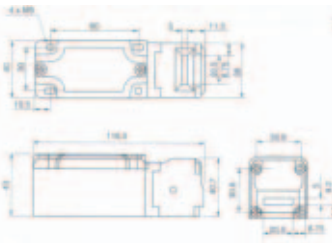


The Cadet is a larger version of the Elf tongue operated safety interlock switch designed to fit the leading edge of sliding door, hinged or lift off guards. With its dual entry slots and rotatable head, the Cadet can offer up to 8 different actuator entry options. Conduit entry via M16. Supplied with actuator. Option add on Metal GD2 kit for rugged use.

Contact arrangement 3N/C or 2N/C+1N/O BBM
 Contact rating thermal 10A Max, 5mA min at 5V
 Contact rating AC-15 1.4A (500Vac), 6A (120Vac)
 Temperature -20 to +80 Deg C
 IP rating IP67
 Housing material Glass filled polyester
 Approvals UL, CE
 Dimensions mm 90.5 x 31 x 30.4

Stock No.	Manf Ref'	Type	Unit Price		
			1-4	5-9	10-24
5105979	440K-C21096	3 N/C INC FLAT ACTUATOR	21.00	20.48	19.95
5105985	440K-C21097	3 N/C INC 90 DEG ACTUATOR	21.00	20.48	19.95
5105976	440K-C21098	2 N/C + 1 N/O INC FLAT ACT	21.00	20.48	19.95
5106789	440K-C21061	2 N/C + 1 N/O INC 90 DEG ACTUATOR	21.00	20.48	19.95
5106674	440K-A21014	SPARE FLAT ACTUATOR	3.00	2.93	2.85
5105994	440K-A21006	SPARE 90 DEG ACTUATOR	3.00	2.93	2.85
5106507	440K-A21030	GD2 KIT INC FLEXIBLE ACTUATOR	9.00	8.78	8.55

Metal Safety Switch 'MT-GD2'



The MT-GD2 is a heavy duty tongue operated safety interlock switch designed to fit the leading edge of sliding door, hinged or lift off guards. With its dual entry slots and rotatable head, the MT-GD2 can offer up to 8 different actuator entry options. Conduit entry via M20. Supplied with actuator.

Contact arrangement 3N/C + 1N/O BBM
 Contact rating thermal 10A Max, 5mA min at 5V
 Contact rating AC-15 1.4A (500Vac), 6A (120Vac)
 Temperature -20 to +80 Deg C
 IP rating IP67
 Housing material Zinc casting painted red
 Approvals UL, CE
 Dimensions mm 117 x 40 x 43

Stock No.	Manf Ref'	Type	Unit Price		
			1-4	5-9	10-24
5106600	440K-MT550074	3 N/C + 1 N/O INC STAND ACTUATOR	38.00	37.05	36.10
5106762	440K-MT550075	3 N/C + 1 N/O INC FLEXIBLE ACTUATOR	41.00	39.98	38.95
5106171	440G-A27011	SPARE STANDARD ACTUATOR	4.00	3.90	3.80
5106417	440G-A27143	SPARE FLEXIBLE ACTUATOR	9.00	8.78	8.55
5106420	440G-A27163	SLIDING BOLT ACTUATOR	77.00	75.08	73.15

