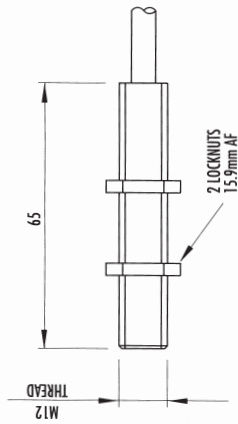
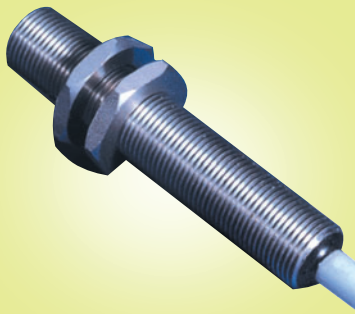


**Magnetic Proximity Switch  
ES2 End Sensor**



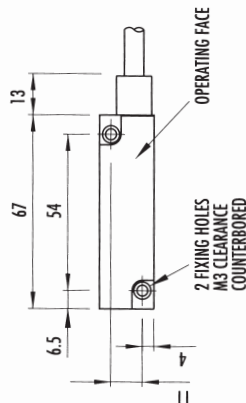
An end sensing magnetic reed switch housed in an M12 threaded tubular stainless body.

Contact arrangement	Single pole changeover
Contact material	Tungsten
Max. volts	250 AC/DC
Max. current	3A AC/DC
Switching Power	20W/VA max
Housing	Stainless steel
IP Rating	IP 68
Temperature	-18°C to +80°C (up to +170°C available)
Connection type	Pre-wired flexible hi-temp PVC 2 core, 2M
Operating Distance	Magnet E3=16mm, E10=10mm

Please order magnets separately.

Stock No.	Manf Ref'	Type	Unit Price		
			1-4	5-9	10+
1912445	443SM-565096	ES2 S/S	80.25	77.84	75.44

**Ferro-Actuated Switch  
Maglock MPS5**

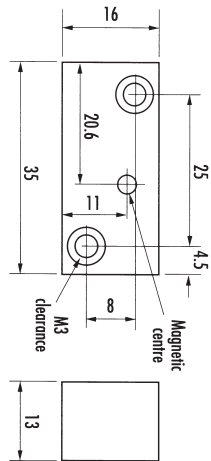
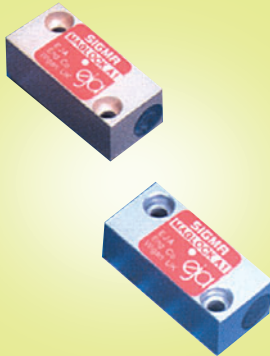


A ferro-actuated switch that has a built in system of permanent magnets & operates upon the external approach of ferro-magnetic material e.g. mild steel.

Contact arrangement	Single pole normally open
Contact material	Rhodium
Max. volts	250 AC/DC
Max. current	1 Amp AC, 0.25 Amp DC, resistive
Switching Power	15W/VA max
Housing	Brass
IP Rating	IP 68
Temperature	-10°C to +50°C
Connection type	Pre-wired flexible PVC 2 core, 2M
Operating Distance	12mm direct approach 25.4mm lateral approach

Stock No.	Manf Ref'	Type	Unit Price		
			1-4	5-9	10+
1912425	440SM-565056	MPS5	90.92	88.19	85.46

**Magnet Maglock A1**



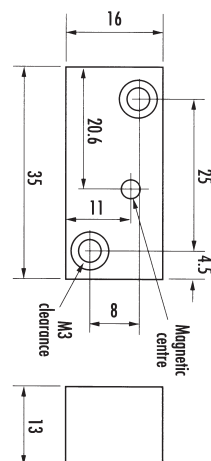
A Maglock A1 magnet housed in stainless steel for use with the following switches:

Switch	Operating distance (mm)	Differential (max)	Differential (typical)
MPS3	10	10	7

Operating distance is the maximum distance at which the switch just operates with the operating faces parallel and in line, the magnetic faces opposite each other and the magnet moving. When the magnet is withdrawn the switch will reset itself at a distance greater than this, the distance between the two distances is termed as the differential. Mounting on or close to ferro-magnetic materials will reduce these distances.

Stock No.	Manf Ref'	Type	Unit Price		
			1-4	5-9	10+
1912137	440SM-545002	A1 S/S	29.95	29.05	28.15

**Magnet Maglock A2**



A Maglock A2 magnet housed in stainless steel for use with the following switches:

Switch	Operating distance (mm)	Differential (max)	Differential (typical)
MPS1/A/5	10	16	11
MPS2	10	16	11
MPS3	16	13	10
MPS12	6	16	11
MPS14	6	16	11
MPS34D	3	16	11
MPS44	6	16	11

Operating distance is the maximum distance at which the switch just operates with the operating faces parallel and in line, the magnetic faces opposite each other and the magnet moving. When the magnet is withdrawn the switch will reset itself at a distance greater than this, the distance between the two distances is termed as the differential. Mounting on or close to ferro-magnetic materials will reduce these distances.

Stock No.	Manf Ref'	Type	Unit Price		
			1-4	5-9	10+
1912143	440SM-545005	A2 S/S	29.95	29.05	28.15