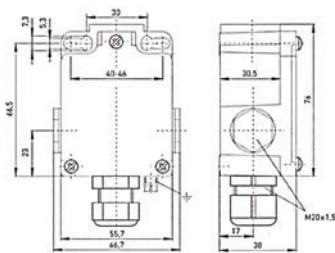


**ATEX Limit Switch
EEx 355 Metal**



An explosion proof metal bodied limit switch. Although wider than the DIN50041 sizes the fixing hole centres are the same at 30mm separation. Dual certified for Ex zones 1 and 2 as well as dust zones 21 and 22. Slow action positive break contacts. Available also with 2 N/C positive break contacts and 1 N/O / 1 N/C overlapping positive break.

Actuator	Adjustable lever
Housing	Metal Zinc diecast, enamelled
Contact arrangement	1 N/O and 1 N/C positive break
Electrical rating	6A at 250Vac
IP Rating	IP65
Temperature	-20°C to +60°C
Termination	Cable gland, wiring compartment
Ex Certification	EX II 2G EEx d II C T6
Ex Certification	Ex II 2D IP65 T80
Approvals	DMT01 ATEX E178

Stock No.	Manf Ref'	Type	Unit Price		
			1-4	5-9	10+
2441080	EEX3554V7H10/1S-2138	ADJUST LEVER	134.67	130.63	126.59