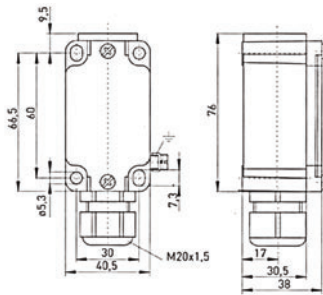


**ATEX Limit Switch  
EEx 335 Metal**

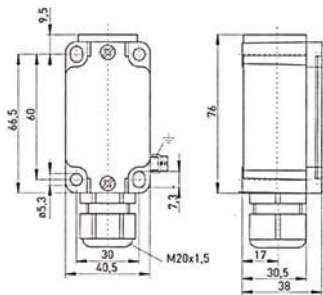


An explosion proof metal bodied limit switch housed in a DIN50041 standard case allowing direct drop to replace non ex standard limit switches. Dual certified for Ex zones 1 and 2 as well as dust zones 21 and 22. Slow action positive break contacts. Available also with 2 N/C positive break contacts and 1 N/O / 1 N/C overlapping positive break.

- Actuator Plain plunger
- Housing Metal zinc diecast, enamelled
- Contact arrangement 1 N/O and 1 N/C positive break
- Electrical rating 6A at 250Vac
- IP Rating IP65
- Temperature -20°C to +60°C
- Termination Cable gland, wiring compartment
- Ex Certification EX II 2G EEx d II C T6
- Ex Certification Ex II 2D IP65 T80
- Approvals DMT01 ATEX E178

Stock No.	Manf Ref'	Type	Unit Price		
			1-4	5-9	10+
2441060	EEX335S10/1S	PLAIN PLUNGER	117.72	114.19	110.66

**ATEX Limit Switch  
EEx 335 Metal**

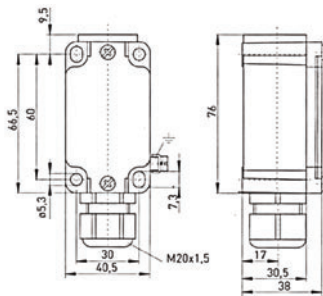


An explosion proof metal bodied limit switch housed in a DIN50041 standard case allowing direct drop to replace non ex standard limit switches. Dual certified for Ex zones 1 and 2 as well as dust zones 21 and 22. Slow action positive break contacts. Available also with 2 N/C positive break contacts and 1 N/O / 1 N/C overlapping positive break.

- Actuator Roller plunger
- Housing Metal zinc diecast, enamelled
- Contact arrangement 1 N/O and 1 N/C positive break
- Electrical rating 6A at 250Vac
- IP Rating IP65
- Temperature -20°C to +60°C
- Termination Cable gland, wiring compartment
- Ex Certification EX II 2G EEx d II C T6
- Ex Certification Ex II 2D IP65 T80
- Approvals DMT01 ATEX E178

Stock No.	Manf Ref'	Type	Unit Price		
			1-4	5-9	10+
2441062	EEX335R10/1S	ROLLER PLUNGER	118.97	115.40	111.83

**ATEX Limit Switch  
EEx 335 Metal**

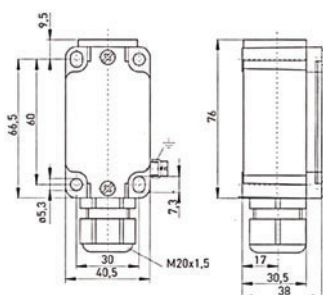


An explosion proof metal bodied limit switch housed in a DIN50041 standard case allowing direct drop to replace non ex standard limit switches. Dual certified for Ex zones 1 and 2 as well as dust zones 21 and 22. Slow action positive break contacts. Available also with 2 N/C positive break contacts and 1 N/O / 1 N/C overlapping positive break.

- Actuator Roller lever
- Housing Metal zinc diecast, enamelled
- Contact arrangement 1 N/O and 1 N/C positive break
- Electrical rating 6A at 250Vac
- IP Rating IP65
- Temperature -20°C to +60°C
- Termination Cable gland, wiring compartment
- Ex Certification EX II 2G EEx d II C T6
- Ex Certification Ex II 2D IP65 T80
- Approvals DMT01 ATEX E178

Stock No.	Manf Ref'	Type	Unit Price		
			1-4	5-9	10+
2441064	EEX3354VH10/1S	ROLLER LEVER	128.41	124.56	120.71

**ATEX Limit Switch  
EEx 335 Metal**



An explosion proof metal bodied limit switch housed in a DIN50041 standard case allowing direct drop to replace non ex standard limit switches. Dual certified for Ex zones 1 and 2 as well as dust zones 21 and 22. Slow action positive break contacts. Available also with 2 N/C positive break contacts and 1 N/O / 1 N/C overlapping positive break.

- Actuator Long roller lever
- Housing Metal zinc diecast, enamelled
- Contact arrangement 1 N/O and 1 N/C positive break
- Electrical rating 6A at 250Vac
- IP Rating IP65
- Temperature -20°C to +60°C
- Termination Cable gland, wiring compartment
- Ex Certification EX II 2G EEx d II C T6
- Ex Certification Ex II 2D IP65 T80
- Approvals DMT01 ATEX E178

Stock No.	Manf Ref'	Type	Unit Price		
			1-4	5-9	10+
2441066	EEX3354V3H10/1S	LNG ROLLER LVR	136.69	132.59	128.49