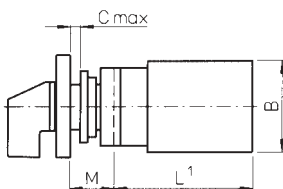
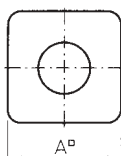


3 Position Step Switch without 'OFF', 20AMP with Escutcheon

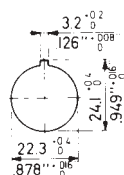
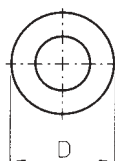


A range of 3 position step rotary cam switches with 60° switching, comprising of switch body, escutcheon plate and handle or without escutcheon. Single hole Ø22mm mounting suitable for up to 6mm panel thickness.

Rated thermal current 20 Amp
 Nominal voltage 690 V
 Rated operational current 20 A (AC21A), 5 A (AC15)
 Motor rating AC-3 5.5kW at 440VAC
 Dielectric strength 6 kV
 Conforms to IEC 947-3, EN60947-3, VDE 0660 part 107

Dimensions (mm)	L	A	B	C	M	D
1pole	41.2	48	43	6 max	20	39
2 pole	50.7	48	43	6 max	20	39
3 pole	69.7	48	43	6 max	20	39

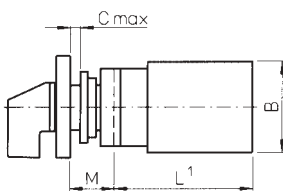
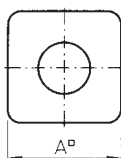
3 Position Step Switch without 'OFF', 20AMP without Escutcheon



Stock No.	Manf Ref'	Type	Unit Price		
			1-4	5-9	10-24
With Escutcheon Plate					
8901052	CA10A230600FT2	1 POLE	9.91	9.61	9.32
8901058	CA10A250600FT2	2 POLE	13.90	13.48	13.07
8901064	CA10A270600FT2	3 POLE	18.52	17.96	17.41
Without Escutcheon Plate					
8901457	CA10A230600FT1	1 POLE	9.30	9.02	8.74
8901460	CA10A250600FT1	2 POLE	13.29	12.89	12.49
8901463	CA10A270600FT1	3 POLE	17.91	17.37	16.84

16 >

4 Position Step Switch without 'OFF', 20AMP with Escutcheon

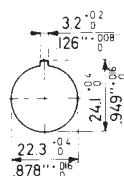
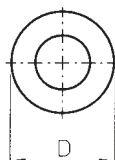


A range of 4 position step rotary cam switches with 60° switching, comprising of switch body, escutcheon plate and handle or without escutcheon. Single hole Ø22mm mounting suitable for up to 6mm panel thickness.

Rated thermal current 20 Amp
 Nominal voltage 690 V
 Rated operational current 20 A (AC21A), 5 A (AC15)
 Motor rating AC-3 5.5kW at 440VAC
 Dielectric strength 6 kV
 Conforms to IEC 947-3, EN60947-3, VDE 0660 part 107

Dimensions (mm)	L	A	B	C	M	D
1pole	41.2	48	43	6 max	20	39
2 pole	60.2	48	43	6 max	20	39
3 pole	79.2	48	43	6 max	20	39

4 Position Step Switch without 'OFF', 20AMP without Escutcheon



Stock No.	Manf Ref'	Type	Unit Price		
			1-4	5-9	10-24
With Escutcheon Plate					
8901055	CA10A231600FT2	1 POLE	11.03	10.70	10.37
8901061	CA10A251600FT2	2 POLE	16.77	16.27	15.76
8901067	CA10A271600FT2	3 POLE	22.51	21.83	21.16
Without Escutcheon Plate					
8901466	CA10A231600FT1	1 POLE	10.42	10.11	9.79
8901469	CA10A251600FT1	2 POLE	16.16	15.68	15.19
8901472	CA10A271600FT1	3 POLE	21.90	21.24	20.59