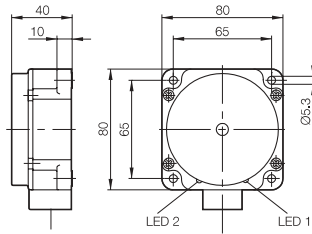


Quadraform 50mm Sensing, DC

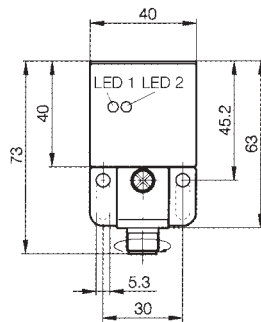


A non flush mounted inductive proximity maxi-sensor in a quadraform housing, designed to sense ferrous & non-ferrous metals, featuring short circuit & reverse polarity protection.

Housing size	80mm x 80mm x 40mm (flush)
Nominal sensing range	50mm (steel), reduced for other metals
Supply voltage	10-55 volt DC
Rated output current	200 mA (transistor)
Off-state current	80 µAmp
Temperature	-25 to +70°C
Frequency	100 Hz
Built in LED's	Sensing & supply voltage indication
IP Rating	IP67
Body material	Fibreglass reinforced polyester
Connection type	Screw terminals

Stock No.	Manf Ref'	Type	Unit Price		
			1-4	5-9	10-24
2668127	BES517139M5H	PNP N/O+1N/C	81.15	78.72	76.28

Quadraform 25mm Sensing, DC

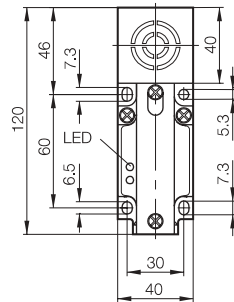
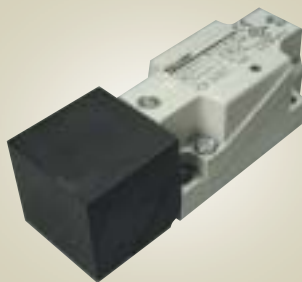


A non flush mounted inductive proximity sensor in a quadraform housing, designed to sense ferrous & non-ferrous metals, including both N/O & N/C outputs in PNP or NPN. The sensor head is adjustable in 5 different positions through 270° for easy adaptation to any application.

Housing size	40mm x 40mm x 73mm (non flush)
Nominal sensing range	25mm (steel), reduced for other metals
Supply voltage	10-55 volt DC
Rated output current	200 mA (transistor)
Off-state current	80 µAmp
Temperature	-25 to +70°C
Frequency	50 Hz
Built in LED's	Sensing & supply voltage indication
IP Rating	IP67
Body material	Fibreglass reinforced polyester
Connection type	M12 connector, 4 wire type (brown/+ve, black/NO output, NC output, blue/-ve)

Stock No.	Manf Ref'	Type	Unit Price		
			1-4	5-9	10-24
2668175	BESQ40KEUPAH25FS04G	PNP	36.90	35.79	34.69
2668172	BESQ40KEUNAH25FS04G	NPN	39.90	38.70	37.51

Quadraform, 15mm Sensing AC/DC

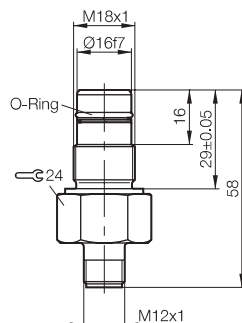


A flush mounted inductive proximity sensor in a 2 wire AC/DC version, designed to sense ferrous & non-ferrous metals. In a quadraform housing, the sensor head is rotatable in 5 different positions through 270° for easy adaptation to any application.

Housing size	40 x 40 x 120 (flush)
Nominal sensing range	15mm (steel), reduced for other metals
Supply voltage	20-250 volt AC/DC
Rated output current	250 mA at 25 °C (transistor)
Off-state current	1.7 mA at 110 volt AC
Temperature	-25 to +70°C
Frequency	100 Hz
Built in LED	Yes
IP Rating	IP67
Body material	Fibreglass reinforced polyester
Connection type	Screw terminals

Stock No.	Manf Ref'	Type	Unit Price		
			1-4	5-9	10-24
2668130	BES517223M3E	1NO+1NC	37.47	36.35	35.22

M18, 3mm Sensing, DC High Pressure



A flush mounted high pressure inductive proximity sensor designed to sense metals under extreme conditions. Pressure tight to 500 bar it is ideal for hydraulic systems & undersea research. Featuring short circuit, overload & polarity reversal protection.

Thread size	M18 (flush)
Nominal sensing range	3mm (steel), reduced for other metals
Supply voltage	10-30 volt DC
Rated output current	130 mA (transistor)
Off-state current	80 µAmp
Temperature	-25 to +80°C
Frequency	400 Hz
Built in LED	None
IP Rating	IP68
Body material	Stainless steel
Pressure rated up to	500 bar
Connection type	M12 connector, 3 wire type (brown/+ve, black/output, blue/-ve)

Stock No.	Manf Ref'	Type	Unit Price		
			1-4	5-9	10-24
2667917	BES516300S190S4	N/O	118.67	115.11	111.55