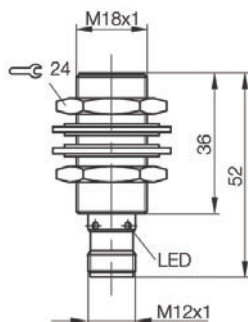
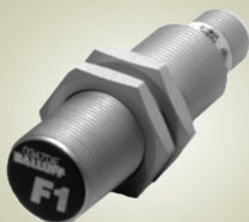


M18 Flush Weld Immune, 5mm Sensing



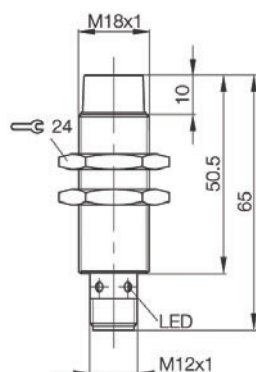
PX1471

A flush mounted inductive proximity switch which is PTFE coated and consequently immune from weld splatter. This model also features multimetal technology which allows you to sense other metals such as aluminium or copper without a reduction in sensing distance.

Housing size	18mm (flush)
Nominal sensing range	5mm
Supply voltage	10-30 volt DC
Rated output current	200 mA
Frequency	2500 Hz
IP Rating	IP67
Body material	Brass PTFE coated
Connection type	M12 connector, 4 wire type

Stock No.	Manf Ref'	Type	Connection	Unit Price
2669150	BES-M18MF1-PSC50A-S04G-W	PNP N/O	M12 4 WIRE	52.26

M18 Non Flush Weld Immune, 12mm Sensing



PX1320

A non flush mounted inductive proximity switch which is PTFE coated and consequently immune from weld splatter. This model also features multimetal technology which allows you to sense other metals such as aluminium or copper without a reduction in sensing distance.

Housing size	18mm (non flush)
Nominal sensing range	12mm
Supply voltage	10-30 volt DC
Rated output current	200 mA
Frequency	2500 Hz
IP Rating	IP67
Body material	Brass PTFE coated
Connection type	M12 connector, 4 wire type

Stock No.	Manf Ref'	Type	Connection	Unit Price
2669153	BES-M18ML-PSC12E-S04G-W	PNP N/O	M12 4 WIRE	51.21