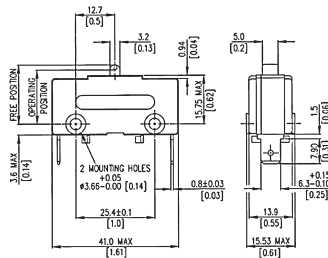
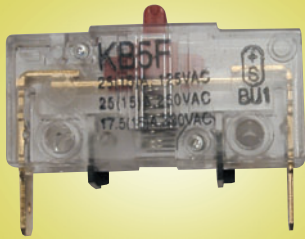


**Positive Action  
Double Break Microswitches**

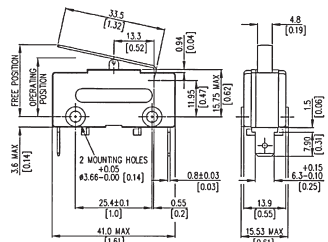
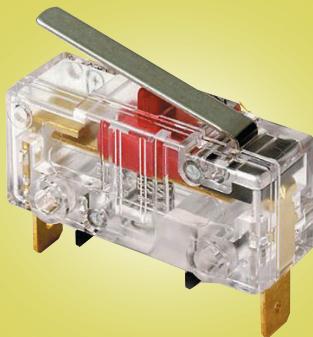


A high capacity single pole, normally closed, double break, positive action microswitch with contacts which are forced open to 2 x 3mm (min gap), even in the event of welding. Featuring standard plunger actuator and 6.3mm 'push-on' terminals.

Electrical rating 20 A at 250 VAC, 10 A at 30 VDC (resistive)  
 Contacts / Material Double break positive action / Silver  
 Mechanical life  $10^7$   
 Temperature  $-40^{\circ}\text{C}$  to  $+85^{\circ}\text{C}$   
 IP Rating IP40  
 Housing / Plunger Glass reinforced polyamide / Polyamide  
 Operating force.N 3  
 Total travel force.N 4.7  
 Free position.mm 19.3  
 Overtravel.mm Depress to case  
 Operating characteristics are specified from mounting holes  
 Approvals UL, CSA

Stock No.	Manf Re'	Type	Unit Price		
			1-9	10-49	50-99
2191885	KB5FULS	PLUNGER	9.40	8.46	7.19

**Positive Action  
Double Break Microswitches**

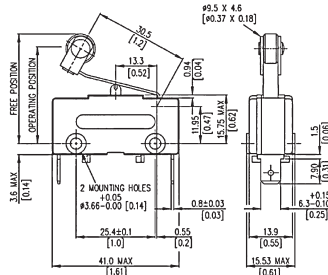
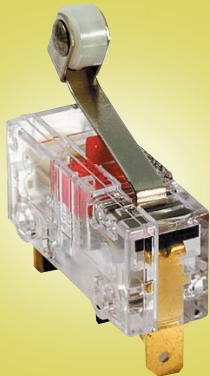


A high capacity single pole, normally closed, double break, positive action microswitch with contacts which are forced open to 2 x 3mm (min gap), even in the event of welding. Featuring a plain lever (33.5mm) and 6.3mm 'push-on' terminals.

Electrical rating 20 A at 250 VAC, 10 A at 30 VDC (resistive)  
 Contacts / Material Double break positive action / Silver  
 Mechanical life  $10^7$   
 Temperature  $-40^{\circ}\text{C}$  to  $+85^{\circ}\text{C}$   
 IP Rating IP40  
 Housing / Lever Glass reinforced polyamide / Stainless steel  
 Operating force.N 2.25  
 Total travel force.N 1.88  
 Free position.mm 26.0  
 Overtravel.mm Depress to case  
 Operating characteristics are specified from mounting holes  
 Approvals UL, CSA

Stock No.	Manf Re'	Type	Unit Price		
			1-9	10-49	50-99
2191879	KB5FKULS	LEVER 33.5	10.43	9.39	7.98

**Positive Action  
Double Break Microswitches**

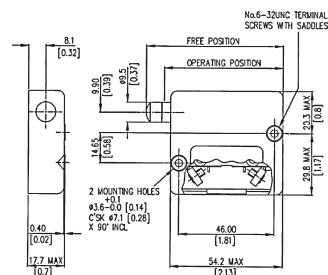


A high capacity single pole, normally closed, double break, positive action microswitch with contacts which are forced open to 2 x 3mm (min gap), even in the event of welding. Featuring a roller lever (30.5mm) and 6.3mm 'push-on' terminals.

Electrical rating 20 A at 250 VAC, 10 A at 30 VDC (resistive)  
 Contacts / Material Double break positive action / Silver  
 Mechanical life  $10^7$   
 Temperature  $-40^{\circ}\text{C}$  to  $+85^{\circ}\text{C}$   
 IP Rating IP40  
 Housing / Lever Glass reinforced polyamide / Stainless steel  
 Operating force.N 2.25  
 Total travel force.N 2.1  
 Free position.mm 36.5  
 Overtravel.mm Depress to case  
 Operating characteristics are specified from mounting holes  
 Approvals UL, CSA

Stock No.	Manf Re'	Type	Unit Price		
			1-9	10-49	50-99
2191876	KB5FKRULS	ROLLER 30.5	11.71	10.54	8.96

**Positive Action  
Double Break Microswitches**



Enclosed for electrical isolation this high capacity single pole, normally closed, double break, positive action microswitch has contacts which are forced open to 2 x 1.5mm (min gap), when groove on plunger enters switch case. Featuring a plunger actuator and screw terminals.

Electrical rating 20 A at 250 VAC, 10 A at 30 VDC (resistive)  
 Contacts / Material Double break positive action / Silver cad.ox  
 Mechanical life  $10^7$   
 Temperature  $-10^{\circ}\text{C}$  to  $+85^{\circ}\text{C}$   
 IP Rating IP40  
 Housing / Plunger Glass reinforced polyamide / Mild steel  
 Operating force.N 10  
 Free position.mm 61.9  
 Operating pos min.mm 57.3  
 Overtravel.mm Depress to case  
 Operating characteristics are specified from mounting holes  
 Approvals UL, CSA

Stock No.	Manf Re'	Type	Unit Price		
			1-9	10-49	50-99
2191873	KB5EQU LS	PLUNGER	15.71	14.14	12.02