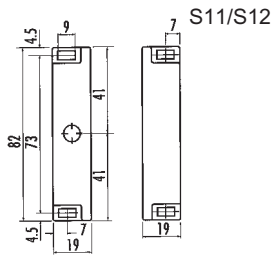
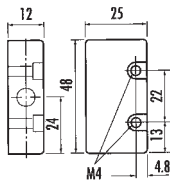


Coded Magnetic Safety Switch 'Sipha S11, S12, S21, S22'



S11/S12

The Sipha range of magnetically coded safety interlock switches to use with Sipha control units for reliable non-contact machine guarding. Sipha switches will only operate with Sipha actuators making them highly resistant to defeat. With moulded-in brackets & their diminutive size, it makes them extremely versatile & simple to install. The Sipha sensor can be connected to any control unit to give a monitored circuit. For high risk applications, the control unit is used with a single sensor to give a high integrity system. For other applications, multiple sensors (including mechanical switches) can be connected to one control unit. Sipha has facilities for connecting a manual reset button and for monitoring external devices, such as contactors. Four types of sensor and actuator are available (S11, S12, S21, S22) offering different operating distances, contact configurations and physical sizes, all pre-wired with 3 mtr of cable. The control units are DIN rail mounted and are available in two types, Sipha 1 and Sipha 2. The Sipha 1 control unit operates on 24 volts AC/DC and offers 1 N/O (safety) and 1 N/C (auxiliary) outputs. The Sipha 2 control unit operates on either 24 volt AC/DC, 110 volt AC or 230 volt AC and offers 2 N/O (safety) and 1 N/C (auxiliary) outputs.

- Operating distance S11, S12 (make 5mm, break 11mm)
S21, S22 (make 9mm, break 12mm)
- Contact arrangement S11, S21 (1 N/C+ 1 N/O, actuator in place)
S12, S22 (2 N/C+ 1 N/O, actuator in place)
- Connections S11, S21 (Pre-wired 4 core cable, 3M)
S12, S22 (Pre-wired 6 core cable, 3M)

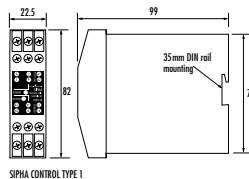
Power supply:

- Control unit 1 24 volt AC/DC (< 2 VA)
- Control unit 2 24 volt AC/DC, 110/230 volt AC (selectable)

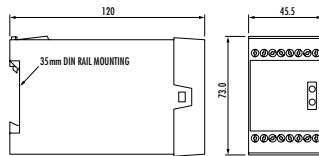
Relay outputs

- Control unit 1 1 N/O (safety), 1 N/C (auxiliary)
- Control unit 2 2 N/O (safety), 1 N/C (auxiliary)
- IP Rating IP67 (sensor & actuator), IP40 (relays)
- Housing material Moulded ABS
- Conforms to standards EN1088, EN954-1 Cat 3, EN60204-1

Control Units 'Sipha 1 & 2'



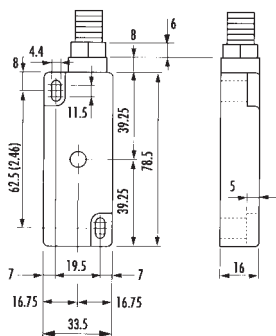
SIPHA CONTROL TYPE 1



SIPHA CONTROL UNIT - TYPE 2

Stock No.	Manf Ref'	Type	Unit Price		
			1-4	5-9	10-24
5106444	440N-S32014	S11 1N/C+1N/O	19.00	18.53	18.05
5106465	440N-S32022	S12 2N/C+1N/O	25.00	24.38	23.75
5106447	440N-S32015	S21 1N/C+1N/O	19.00	18.53	18.05
5106468	440N-S32023	S22 2N/C+1N/O	25.00	24.38	23.75
5106441	440N-S32013	SIPHA1 CONTROL	68.00	66.30	64.60
5106462	440N-S32021	SIPHA2 CONTROL	84.00	81.90	79.80

Coded Magnetic Safety Switch 'Sipha GD2'



The Sipha GD2 range of heavy duty magnetically coded safety interlock switches for use with Sipha control units for reliable non-contact machine guarding. Offering all the advantages of the standard Sipha switches but housed in a stainless steel case, making these robust sensors ideal for harsh environments. Cables supplied separately.

- Operating distance S42, S43 (make 10mm, break 13mm)
- Contact arrangement S42 (1 N/C+1 N/O safety, 1 N/C auxiliary)
S43 (1 N/C+1 N/O safety, 1 N/O auxiliary)
- Connections M12, 8 pin plug-in connector, 5M cable
- Safety contact wiring blue/red-N/C, yellow/green-N/O
- Auxiliary contact wiring black/white-auxiliary, green-earth, spare core
- Temperature -10°C to +100°C
- IP Rating IP68 (sensor & actuator)
- Housing material Stainless steel
- Conforms to standards EN1088, EN954-1 Cat 3, EN60204-1
- Approvals UL, TÜV

Stock No.	Manf Ref'	Type	Unit Price		
			1-4	5-9	10-24
5106489	440N-S32046	S43 1N/C+2N/O	92.00	89.70	87.40
5106492	440N-S32047	S42 2N/C+1N/O	92.00	89.70	87.40

