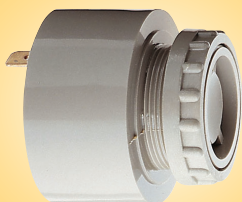


<<41

**Ex Panel Buzzer
718 Series**

An intrinsically safe installation buzzer suitable for zones 1 and 2 when used with a zener barrier.

Housing	ABS
Current consumption	24Vdc 20mA
IP Rating	IP43
Temperature	minus 20 to +60 Deg C
Termination	6.3mm spades
Ex Certification	EX II 2G Ex ib II C T4/T5/T6
Approvals	DMT 98 ATEX E 005 X
Dimensions	Diam 43mm, 28mm thread

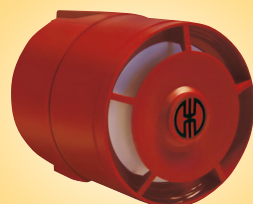
Stock No.	Manf Ref'	Type	Unit Price
			1-4
2201040	718-000-55	24VDC	269.21

**Ex Loudspeaker 25W
710 Series**

An Ex Loudspeaker suitable for use in zones 1 and 2, rated to IP66. Max output power level may be reduced in 6 steps from 25W at 100V down to 1W by hardwiring.

Housing	Plastic UV resistant
Sound pressure	25W 119 dB, 1W 107dB
IP Rating	IP66
Temperature	minus 20 to +55 Deg C
Termination	Cable gland, terminal chamber
Ex Certification	EX II 2G EEX dem II C T5
Approvals	PTB 04ATEX 1110
Dimensions	D 287mm, W 219mm

Stock No.	Manf Ref'	Type	Unit Price
			1-4
2201042	710-000-00	100V	347.50

**Ex Multitone Sounder
714 Series**

An Ex multitone sounder with 26 selectable tones for use in zones 0, 1 and 2 when used with an appropriate zener barrier. Direct external setting of 2 tones possible. Rated to IP65 with an output of up to 103dB.

Housing	ABS
Current consumption	24Vdc 14mA
IP Rating	IP65
Temperature	minus 20 to +55 Deg C
Termination	Cable gland, terminal chamber
Ex Certification	EX II 2G EEX ia II C T4
Approvals	BASEEFA 06 atex 0161
Dimensions	Diam 93mm, D 103mm

Stock No.	Manf Ref'	Type	Unit Price
			1-4
2201046	714-000-55	24VDC	269.21

**Ex Signal Horn
750 Series**

An Ex signal horn suitable for use in zones 1 and 2. Rated to IP55 with a sound output of up to 105dB.

Housing	PC/ABS
Current consumption	24Vdc 350mA, 230Vac 70mA
IP Rating	IP55
Temperature	minus 20 to +50 Deg C
Termination	Cable 3M
Ex Certification	EX II 2G Ex mb II T5
Approvals	BVS 03 ATEX E 118X
Dimensions	D 152mm, W 148mm, H 356mm

Stock No.	Manf Ref'	Type	Unit Price
			1-4
2201048	750-000-55	24VDC	320.28
2201050	750-000-68	230VDC	271.94