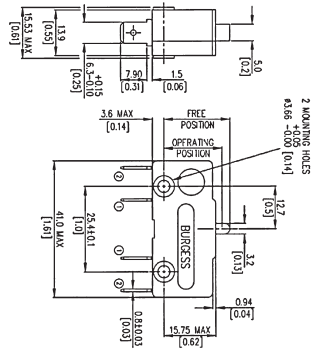


**Two Circuit Microswitch Plunger, 25 Amp**

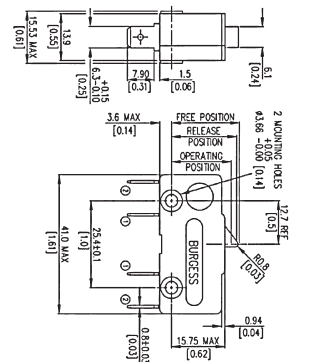
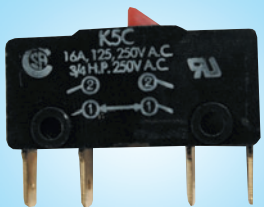


A general purpose snap action microswitch with a single pole, two circuit (1 N/O + 1 N/C) double break mechanism. Rated at 25A / 250VAC. Available with a button plunger and 6.3mm push-on terminals.

Electrical rating 25 A at 250 VAC, 15 A at 30 VDC (resistive)  
 Contacts / Material 2 circuit double break changeover / Silver  
 Mechanical life  $10^7$   
 Temperature  $-10^{\circ}$  C to  $+85^{\circ}$  C  
 IP Rating IP40  
 Housing / Plunger Glass fibre reinforced polyamide / Polyamide  
 Operating force.N 2.8  
 Release force.N 1.1  
 Free position.mm 19.7  
 Tripping point.mm 17.4  
 Differential travel.mm 1.27  
 Overtravel.mm Depress to case  
 Operating characteristics are specified from mounting holes  
 Approvals UL, CSA

Stock No.	Manf Ref'	Type	Unit Price		
			1-9	10-49	50-99
2191864	K5UL	BUTTON PLUNGER	8.81	7.93	6.74

**Two Circuit Microswitch Cam Button, 25 Amp**

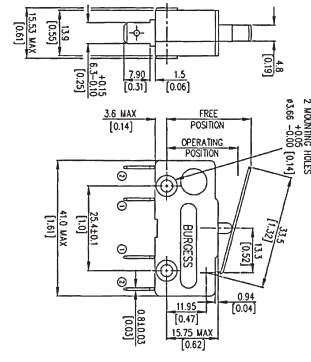
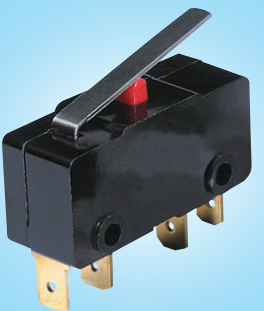


A general purpose snap action microswitch with a single pole, two circuit (1 N/O + 1 N/C) double break mechanism. Rated at 25A / 250VAC. Available with a cam button plunger and 6.3mm push-on terminals.

Electrical rating 25 A at 250 VAC, 15 A at 30 VDC (resistive)  
 Contacts / Material 2 circuit double break changeover / Silver  
 Mechanical life  $10^7$   
 Temperature  $-10^{\circ}$  C to  $+85^{\circ}$  C  
 IP Rating IP40  
 Housing / Plunger Glass fibre reinforced polyamide / Polyamide  
 Operating force.N 2.8  
 Release force.N 1.1  
 Free position.mm 19.7  
 Tripping point.mm 16.7  
 Differential travel.mm 2.2  
 Overtravel.mm Depress to case  
 Operating characteristics are specified from mounting holes  
 Approvals UL, CSA

Stock No.	Manf Ref'	Type	Unit Price		
			1-9	10-49	50-99
2191849	K5CUL	CAM BUTTON	8.81	7.93	6.74

**Two Circuit Microswitch Plain Lever, 25 Amp**

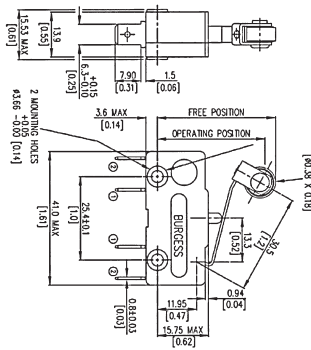


A general purpose snap action microswitch with a single pole, two circuit (1 N/O + 1 N/C) double break mechanism. Rated at 25A / 250VAC. Available with a 33.5mm plain lever and 6.3mm push-on terminals.

Electrical rating 25 A at 250 VAC, 15 A at 30 VDC (resistive)  
 Contacts / Material 2 circuit double break changeover / Silver  
 Mechanical life  $10^7$   
 Temperature  $-10^{\circ}$  C to  $+85^{\circ}$  C  
 IP Rating IP40  
 Housing / Lever Glass fibre reinforced polyamide / St. Steel  
 Operating force.N 1.4  
 Release force.N 0.35  
 Free position.mm 28  
 Tripping point.mm 20.3  
 Differential travel.mm 3.2  
 Overtravel.mm Depress to case  
 Operating characteristics are specified from mounting holes  
 Approvals UL, CSA

Stock No.	Manf Ref'	Type	Unit Price		
			1-9	10-49	50-99
2191855	K5KUL	PLAIN LEVER	Consult for Price		

**Two Circuit Microswitch Roller Lever, 25 Amp**



A general purpose snap action microswitch with a single pole, two circuit (1 N/O + 1 N/C) double break mechanism. Rated at 25A / 250VAC. Available with a 30.5mm roller lever and 6.3mm push-on terminals.

Electrical rating 25 A at 250 VAC, 15 A at 30 VDC (resistive)  
 Contacts / Material 2 circuit double break changeover / Silver  
 Mechanical life  $10^7$   
 Temperature  $-10^{\circ}$  C to  $+85^{\circ}$  C  
 IP Rating IP40  
 Housing / Lever Glass fibre reinforced polyamide / St. Steel  
 Operating force.N 1.5  
 Release force.N 0.38  
 Free position.mm 38.6  
 Tripping point.mm 32  
 Differential travel.mm 3.2  
 Overtravel.mm Depress to case  
 Operating characteristics are specified from mounting holes  
 Approvals UL, CSA

Stock No.	Manf Ref'	Type	Unit Price		
			1-9	10-49	50-99
2191852	K5KRUL	ROLLER LEVER	10.77	9.69	8.24