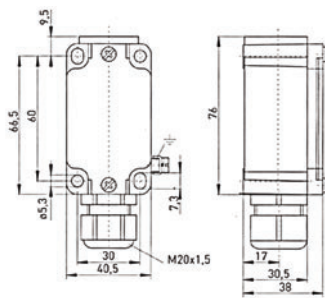


**ATEX Limit Switch
EEx 335 Metal**

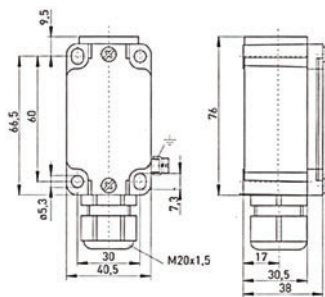


An explosion proof metal bodied limit switch housed in a DIN50041 standard case allowing direct drop to replace non ex standard limit switches. Dual certified for Ex zones 1 and 2 as well as dust zones 21 and 22. Slow action positive break contacts. Available also with 2 N/C positive break contacts and 1 N/O / 1 N/C overlapping positive break.

Actuator	Adjustable lever
Housing	Metal zinc diecast, enamelled
Contact arrangement	1 N/O and 1 N/C positive break
Electrical rating	6A at 250Vac
IP Rating	IP65
Temperature	-20°C to +60°C
Termination	Cable gland, wiring compartment
Ex Certification	EX II 2G EEx d II C T6
Ex Certification	Ex II 2D IP65 T80
Approvals	DMT01 ATEX E178

Stock No.	Manf Ref'	Type	Unit Price		
			1-4	5-9	10+
2441068	EEX3354V7H10/1S-2138	ADJUST LEVER	129.98	126.08	122.18

**ATEX Limit Switch
EEx 335 Metal**



An explosion proof metal bodied limit switch housed in a DIN50041 standard case allowing direct drop to replace non ex standard limit switches. Dual certified for Ex zones 1 and 2 as well as dust zones 21 and 22. Slow action positive break contacts. Available also with 2 N/C positive break contacts and 1 N/O / 1 N/C overlapping positive break.

Actuator	Forked lever
Housing	Metal zinc diecast, enamelled
Contact arrangement	1 N/O and 1 N/C positive break
Electrical rating	6A at 250Vac
IP Rating	IP65
Temperature	-20°C to +60°C
Termination	Cable gland, wiring compartment
Ex Certification	EX II 2G EEx d II C T6
Ex Certification	Ex II 2D IP65 T80
Approvals	DMT01 ATEX E178

Stock No.	Manf Ref'	Type	Unit Price		
			1-4	5-9	10+
2441070	EEX3353V4D10/1S	FORKED LEVER	157.99	153.25	148.51