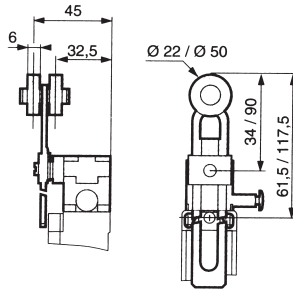


Adjustable Rotary Lever, Safety Switch, Manual Reset

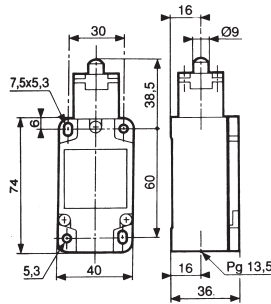


A very reliable, robust safety limit switch with 1 N/O + 1 N/C positive snap acting changeover contacts, which after actuation the safety contact remains locked in the N/C position, it is only unlocked by pressing the manual reset button. Housed in a thermoplastic case with a four position metal actuator head. Featuring an adjustable rotary lever, with left and right action and plastic roller actuator.

Actuator	Adjustable rotary lever, Ø 50 mm roller
Contact arrangement	1 N/O + 1 N/C (safety) changeover
Electrical rating	6 Amp at 250 VAC, 3 Amp at 24 VDC
Operating force min.	28 cmN
Operating travel min.	30°
Total travel max.	75°
Thermal current	10 Amp
IP Rating	IP 66
Temperature	-25°C to +80°C
Housing	Thermoplastic, EN5047
Cable entry	No 13 sealing gland
Approvals	UL, CSA

Stock No.	Manf Ref ¹	Type	Unit Price		
			1-4	5-9	10-24
3265884	83 854 313	ADJUSTABLE LEVER	Consult for Price		

Plain Plunger Steel Housed

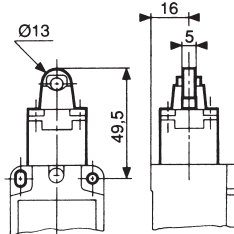


A very reliable, robust limit switch with 1 N/O + 1 N/C positive snap acting changeover contacts housed in an all metal construction. Featuring a top plain plunger actuator.

Actuator	Top plain plunger (steel)
Contact arrangement	1 N/O + 1 N/C changeover
Electrical rating	6 Amp at 250 VAC, 3 Amp at 24 VDC
Operating force min.	10 N
Operating travel min.	5 mm
Total travel max.	6 mm
Thermal current	10 Amp
IP Rating	IP 66
Temperature	-25°C to +80°C
Housing	Steel, EN5041
Cable entry	No 13 sealing gland
Approvals	UL, CSA

Stock No.	Manf Ref ¹	Type	Unit Price		
			1-4	5-9	10-24
3265935	83 861 001	PLAIN PLUNGER	24.47	23.25	22.02

Steel Roller Steel Housed

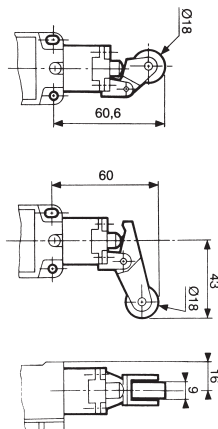


A very reliable, robust limit switch with 1 N/O + 1 N/C positive snap acting changeover contacts housed in an all metal construction with a four position metal actuator head. Featuring a steel roller plunger actuator.

Actuator	Steel roller plunger
Contact arrangement	1 N/O + 1 N/C changeover
Electrical rating	6 Amp at 250 VAC, 3 Amp at 24 VDC
Operating force min.	10 N
Operating travel min.	5 mm
Total travel max.	6 mm
Thermal current	10 Amp
IP Rating	IP 66
Temperature	-25°C to +80°C
Housing	Steel, EN5041
Cable entry	No 13 sealing gland
Approvals	UL, CSA

Stock No.	Manf Ref ¹	Type	Unit Price		
			1-4	5-9	10-24
3265962	83 861 501	STEEL ROLLER	28.57	27.14	25.71

Roller Lever Safety Switch Steel Housed



A very reliable, robust safety limit switch with 1 N/O + 1 N/C (positive opening) changeover contacts housed in an all metal construction with a four position metal actuator head. Featuring a roller lever plunger actuator.

Actuator	Lever with plastic roller
Contact arrangement	1 N/O + 1 N/C (safety) changeover
Electrical rating	6 Amp at 250 VAC, 3 Amp at 24 VDC
Operating force min.	9 N
Operating travel min.	5 mm
Total travel max.	6 mm
Thermal current	10 Amp
IP Rating	IP 66
Temperature	-25°C to +80°C
Housing	Steel, EN5041
Cable entry	No 13 sealing gland
Approvals	UL, CSA

Stock No.	Manf Ref ¹	Type	Unit Price		
			1-4	5-9	10-24
3265938	83 861 101	ROLLER LEVER	23.58	22.40	21.22