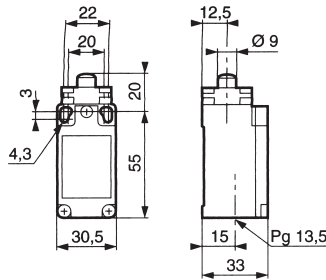


**Plain Plunger Safety Switch
Plastic Housed**

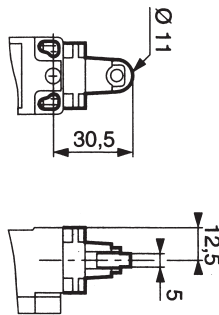


A very reliable, robust safety limit switch with 1 N/O + 1 N/C (positive opening) changeover contacts housed in a thermoplastic case with a metal actuator head. Featuring a top plain plunger actuator.

Actuator	Top plain plunger (steel)
Contact arrangement	1 N/O + 1 N/C (safety) changeover
Electrical rating	6 Amp at 250 VAC, 3 Amp at 24 VDC
Operating force min.	10 N
Operating travel min.	5 mm
Total travel max.	6 mm
Thermal current	10 Amp
IP Rating	IP 66
Temperature	-25°C to +80°C
Housing	Thermoplastic, EN5047
Cable entry	No 13 sealing gland
Approvals	UL, CSA

Stock No.	Manf Ref'	Type	Unit Price		
			1-4	5-9	10-24
3265815	83 850 001	PLAIN PLUNGER	13.60	12.92	12.24

**Steel Roller Safety Switch
Plastic Housed**

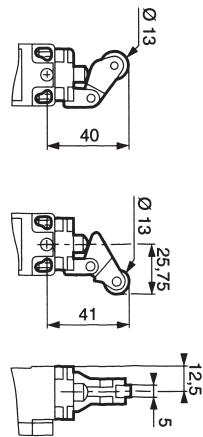


A very reliable, robust safety limit switch with 1 N/O + 1 N/C (positive opening) changeover contacts housed in a thermoplastic case with a four position metal actuator head. Featuring a steel roller plunger actuator.

Actuator	Steel roller plunger
Contact arrangement	1 N/O + 1 N/C (safety) changeover
Electrical rating	6 Amp at 250 VAC, 3 Amp at 24 VDC
Operating force min.	10 N
Operating travel min.	5 mm
Total travel max.	6 mm
Thermal current	10 Amp
IP Rating	IP 66
Temperature	-25°C to +80°C
Housing	Thermoplastic, EN5047
Cable entry	No 13 sealing gland
Approvals	UL, CSA

Stock No.	Manf Ref'	Type	Unit Price		
			1-4	5-9	10-24
3265836	83 850 501	STEEL ROLLER	15.08	14.33	13.57

**Roller Lever Safety Switch
Plastic Housed**

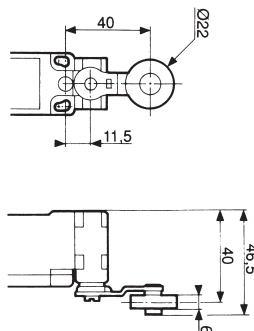


A very reliable, robust safety limit switch with 1 N/O + 1 N/C (positive opening) changeover contacts housed in a thermoplastic case with a four position metal actuator head. Featuring a roller lever plunger actuator.

Actuator	Lever with plastic roller
Contact arrangement	1 N/O + 1 N/C (safety) changeover
Electrical rating	6 Amp at 250 VAC, 3 Amp at 24 VDC
Operating force min.	9 N
Operating travel min.	5 mm
Total travel max.	6.5 mm
Thermal current	10 Amp
IP Rating	IP 66
Temperature	-25°C to +80°C
Housing	Thermoplastic, EN5047
Cable entry	No 13 sealing gland
Approvals	UL, CSA

Stock No.	Manf Ref'	Type	Unit Price		
			1-4	5-9	10-24
3265818	83 850 101	ROLLER LEVER	18.01	17.11	16.21

**Rotary Lever Safety Switch
Plastic Housed**



A very reliable, robust safety limit switch with 1 N/O + 1 N/C (positive opening) changeover contacts housed in a thermoplastic case with a four position metal actuator head. Featuring an rotary lever, with left and right action and plastic roller actuator.

Actuator	40 mm offset rotary lever, Ø 22 mm roller
Contact arrangement	1 N/O + 1 N/C (safety) changeover
Electrical rating	6 Amp at 250 VAC, 3 Amp at 24 VDC
Operating force min.	28 cmN
Operating travel min.	30°
Total travel max.	75°
Thermal current	10 Amp
IP Rating	IP 66
Temperature	-25°C to +80°C
Housing	Thermoplastic, EN5047
Cable entry	No 13 sealing gland
Approvals	UL, CSA

Stock No.	Manf Ref'	Type	Unit Price		
			1-4	5-9	10-24
3265824	83 850 301	ROLLER LEVER	16.98	16.13	15.28