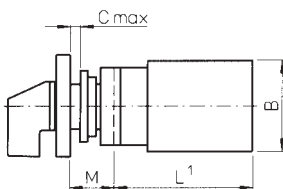
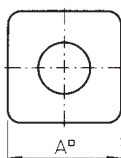


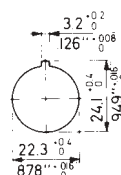
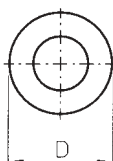
**Motor Reversing  
3 Phase  
With Escutcheon**



3 phase, 3 pole motor reversing rotary cam switch with 60° switching, comprising of switch body, escutcheon plate and handle or without escutcheon. Single hole Ø22mm mounting suitable for up to 6mm panel thickness.

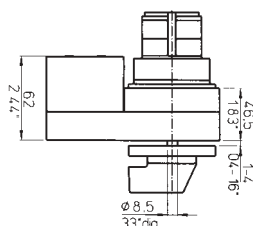
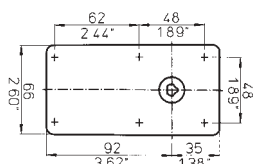
Rated thermal current	20 Amp
Nominal voltage	690 V
Rated operational current	20 A (AC21A), 5 A (AC15)
Motor rating AC-3	5.5kW at 440VAC
Dielectric strength	6 kV
Conforms to	IEC 947-3, EN60947-3, VDE 0660 part 107
Dimensions (mm)	L    A    B    C    M    D
3 pole	50.7   49   43   6 max   20   39

**Motor Reversing  
3 Phase  
Without Escutcheon**



Stock No.	Manf Ref'	Type	Unit Price		
			1-4	5-9	10-24
<b>With Escutcheon Plate</b>					
8901076	CA10A401620FT2	3 POLE	12.78	12.40	12.01
<b>Without Escutcheon Plate</b>					
8901511	CA10A401620FT1	3 POLE	12.17	11.80	11.44

**4 Position Step Switch  
Without 'OFF', 25AMP  
Electro-Mechanical Interlock**

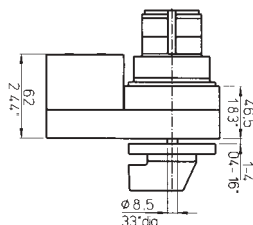
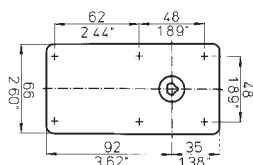


A 3 pole, 4 position step switch with 60° switching, comprising of switch body, escutcheon plate and handle. This switch is fitted with an electro-mechanical interlock which prevents operation of the switch when energised. 4 hole mounting suitable for up to 4mm panel thickness.

Rated thermal current	25 Amp
Nominal voltage	690 V
Rated operational current	25 A (AC21A), 8 A (AC15)
Motor rating AC-3	7.5kW at 440VAC
Dielectric strength	6 kV
Interlock coil consumption	55VA (pull-in), 8VA 2.5W (seal-in)
Interlock coil voltage	230 VAC
Conforms to	IEC 947-3, EN60947-3, VDE 0660 part 107
Depth behind panel	106.6mm

Stock No.	Manf Ref'	Type	Unit Price		
			1-4	5-9	10-24
8901514	CA20B-SP2	3 POLE	92.16	89.40	86.63

**7 Position Step Switch  
Without 'OFF', 50AMP  
Electro-Mechanical Interlock**



A 1 pole, 7 position step switch with 45° switching, comprising of switch body, escutcheon plate and handle. This switch is fitted with an electro-mechanical interlock which prevents operation of the switch when energised. 4 hole mounting suitable for up to 4mm panel thickness.

Rated thermal current	50 Amp
Nominal voltage	690 V
Rated operational current	40 A (AC21A), 16 A (AC15)
Motor rating AC-3	15kW at 440VAC
Dielectric strength	6 kV
Interlock coil rating	55VA (pull-in), 8VA 2.5W (seal-in)
Interlock coil voltage	230 VAC
Conforms to	IEC 947-3, EN60947-3, VDE 0660 part 107
Depth behind panel	100mm

Stock No.	Manf Ref'	Type	Unit Price		
			1-4	5-9	10-24
8901517	C32-SP3	1 POLE	96.64	93.74	90.84