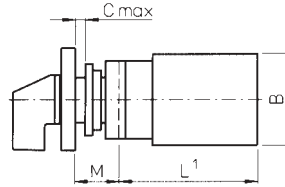


5 Position Step Switch without 'OFF', 20AMP with Escutcheon

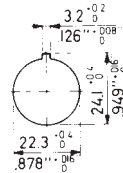
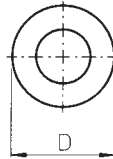


A range of 5 position step rotary cam switches with 60° switching, comprising of switch body, escutcheon plate and handle or without escutcheon. Single hole Ø22mm mounting suitable for up to 6mm panel thickness.

Rated thermal current 20 Amp
 Nominal voltage 690 V
 Rated operational current 20 A (AC21A), 5 A (AC15)
 Motor rating AC-3 5.5kW at 440VAC
 Dielectric strength 6 kV
 Conforms to IEC 947-3, EN60947-3, VDE 0660 part 107

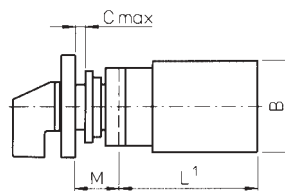
Dimensions (mm)	L	A	B	C	M	D
1 pole	50.7	48	43	6 max	20	39
2 pole	69.7	48	43	6 max	20	39
3 pole	98.2	48	43	6 max	20	39

5 Position Step Switch without 'OFF', 20AMP without Escutcheon



Stock No.	Manf Ref'	Type	Unit Price		
			1-4	5-9	10-24
With Escutcheon Plate					
8901475	CA10A232600FT2	1 POLE	12.78	12.40	12.01
8901478	CA10A252600FT2	2 POLE	19.64	19.05	18.46
8901481	CA10A272600FT2	3 POLE	27.13	26.32	25.50
Without Escutcheon Plate					
8901484	CA10A232600FT1	1 POLE	12.17	11.80	11.44
8901487	CA10A252600FT1	2 POLE	19.03	18.46	17.89
8901490	CA10A272600FT1	3 POLE	26.52	25.72	24.93

6 Position Step Switch without 'OFF', 20AMP with Escutcheon

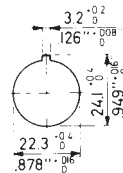
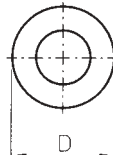


A range of 6 position step rotary cam switches with 60° switching, comprising of switch body, escutcheon plate and handle or without escutcheon. Single hole Ø22mm mounting suitable for up to 6mm panel thickness.

Rated thermal current 20 Amp
 Nominal voltage 690 V
 Rated operational current 20 A (AC21A), 5 A (AC15)
 Motor rating AC-3 5.5kW at 440VAC
 Dielectric strength 6 kV
 Conforms to IEC 947-3, EN60947-3, VDE 0660 part 107

Dimensions (mm)	L	A	B	C	M	D
1 pole	50.7	48	43	6 max	20	39
2 pole	79.2	48	43	6 max	20	39
3 pole	107.7	48	43	6 max	20	39

6 Position Step Switch without 'OFF', 20AMP without Escutcheon



Stock No.	Manf Ref'	Type	Unit Price		
			1-4	5-9	10-24
With Escutcheon Plate					
8901493	CA10A233600FT2	1 POLE	13.90	13.48	13.07
8901496	CA10A253600FT2	2 POLE	22.51	21.83	21.16
8901499	CA10A273600FT2	3 POLE	31.12	30.19	29.25
Without Escutcheon Plate					
8901502	CA10A233600FT1	1 POLE	13.29	12.89	12.49
8901505	CA10A253600FT1	2 POLE	21.90	21.24	20.59
8901508	CA10A273600FT1	3 POLE	30.51	29.59	28.68