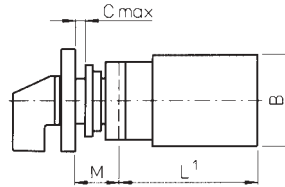


**Changeover Switch
2 Position, 20AMP
with Escutcheon**

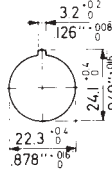
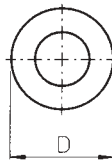


A range of 2 position changeover rotary cam switches with 60° switching without centre 'OFF', comprising of switch body, escutcheon plate and handle or without escutcheon.. Single hole Ø22mm mounting suitable for up to 6mm panel thickness.

Rated thermal current 20 Amp
Nominal voltage 690 V
Rated operational current 20 A (AC21A), 5 A (AC15)
Motor rating AC-3 5.5kW at 440VAC
Dielectric strength 6 kV
Conforms to IEC 947-3, EN60947-3, VDE 0660 part 107

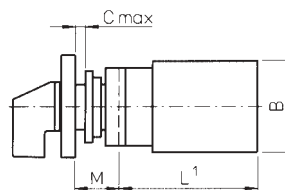
Dimensions (mm)	L	A	B	C	M	D
1 pole	31.7	48	43	6 max	20	39
2 pole	41.2	48	43	6 max	20	39
3 pole	50.7	48	43	6 max	20	39
4 pole	60.2	48	43	6 max	20	39

**Changeover Switch
2 Position, 20AMP
without Escutcheon**



Stock No.	Manf Ref ¹	Type	Unit Price		
			1-4	5-9	10-24
With Escutcheon Plate					
8901040	CA10A220600FT2	1 POLE	8.15	7.91	7.66
8901043	CA10A221600FT2	2 POLE	11.03	10.70	10.37
8901046	CA10A222600FT2	3 POLE	13.90	13.48	13.07
8901049	CA10A223600FT2	4 POLE	16.77	16.27	15.76
Without Escutcheon Plate					
8901433	CA10A220600FT1	1 POLE	7.54	7.31	7.09
8901436	CA10A221600FT1	2 POLE	10.42	10.11	9.79
8901439	CA10A222600FT1	3 POLE	13.29	12.89	12.49
8901442	CA10A223600FT1	4 POLE	16.16	15.68	15.19

**Changeover Switch
3 Position, 20AMP
with Escutcheon**

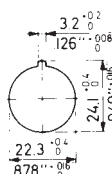
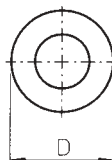


A range of 3 position changeover rotary cam switches with 60° switching and centre 'OFF', comprising of switch body, escutcheon plate and handle or without escutcheon. Single hole Ø22mm mounting suitable for up to 6mm panel thickness.

Rated thermal current 20 Amp
Nominal voltage 690 V
Rated operational current 20 A (AC21A), 5 A (AC15)
Motor rating AC-3 5.5kW at 440VAC
Dielectric strength 6 kV
Conforms to IEC 947-3, EN60947-3, VDE 0660 part 107

Dimensions (mm)	L	A	B	C	M	D
1 pole	31.7	48	43	6 max	20	39
2 pole	41.2	48	43	6 max	20	39
3 pole	50.7	48	43	6 max	20	39
4 pole	60.2	48	43	6 max	20	39

**Changeover Switch
3 Position, 20AMP
without Escutcheon**



Stock No.	Manf Ref ¹	Type	Unit Price		
			1-4	5-9	10-24
With Escutcheon Plate					
8901028	CA10A210620FT2	1 POLE	8.15	7.91	7.66
8901031	CA10A211620FT2	2 POLE	11.03	10.70	10.37
8901034	CA10A212620FT2	3 POLE	13.90	13.48	13.07
8901037	CA10A213620FT2	4 POLE	16.77	16.27	15.76
Without Escutcheon Plate					
8901445	CA10A210620FT1	1 POLE	7.54	7.31	7.09
8901448	CA10A211620FT1	2 POLE	10.42	10.11	9.79
8901451	CA10A212620FT1	3 POLE	13.29	12.89	12.49
8901454	CA10A213620FT1	4 POLE	16.16	15.68	15.19

< 16