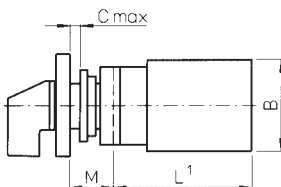


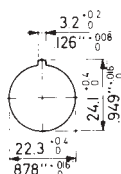
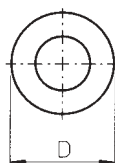
**OFF-ON Switch
2 Position, 20 & 32 AMP
with Escutcheon**



A range of Off-On rotary cam switches with 60° switching, comprising of switch body, escutcheon plate and handle or without escutcheon. Single hole Ø22mm mounting suitable for up to 6mm panel thickness.

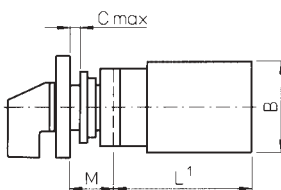
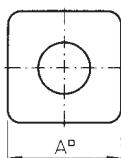
Rated thermal current	20 A (20 A switch), 32 A (32 A switch)					
Nominal voltage	690 V					
Rated operational current	20 A (AC21A), 5 A (AC15) for 20 A switch 32 A (AC21A), 12 A (AC15) for 32A switch					
Dielectric strength	6 kV					
Conforms to	IEC 947-3, EN60947-3, VDE 0660 part 107					
Dimensions (mm)	L	A	B	C	M	D
20 AMP						
1-2 pole	31.7	48	43	6 max	20	39
3-4 pole	41.2	48	43	6 max	20	39
6 pole	50.7	48	43	6 max	20	39
8 pole	60.2	48	43	6 max	20	39
32 AMP						
1-2 pole	37.2	48	46	6 max	20	39
4 pole	79.2	48	46	6 max	20	39

**OFF-ON Switch
2 Position, 20 & 32 AMP
without Escutcheon**



Stock No.	Manf Ref'	Type	Unit Price		
			1-4	5-9	10-24
With Escutcheon Plate, 20 AMP					
8901016	CA10A200620FT2	1 POLE	7.04	6.83	6.62
8901019	CA10A201620FT2	2 POLE	8.15	7.91	7.66
8901022	CA10A202620FT2	3 POLE	9.91	9.61	9.32
8901025	CA10A203620FT2	4 POLE	11.03	10.70	10.37
8901070	CA10A342620FT2	6 POLE	13.90	13.48	13.07
8901073	CA10A344620FT2	8 POLE	16.77	16.27	15.76
Without Escutcheon Plate, 20AMP					
8901379	CA10A200620FT1	1 POLE	6.43	6.24	6.04
8901382	CA10A201620FT1	2 POLE	7.54	7.31	7.09
8901385	CA10A202620FT1	3 POLE	9.30	9.02	8.74
8901388	CA10A203620FT1	4 POLE	10.42	10.11	9.79
8901391	CA10A342620FT1	6 POLE	13.29	12.89	12.49
8901394	CA10A344620FT1	8 POLE	16.16	15.68	15.19
With Escutcheon Plate, 32 AMP					
8901397	CA25A200620FT2	1 POLE	13.42	13.02	12.61
8901400	CA25A201620FT2	2 POLE	15.33	14.87	14.41
8901403	CA25A203620FT2	4 POLE	21.23	20.59	19.96
Without Escutcheon Plate, 32Amp					
8901406	CA25A200620FT1	1 POLE	12.81	12.43	12.04
8901409	CA25A201620FT1	2 POLE	14.72	14.28	13.84
8901412	CA25A203620FT1	4 POLE	18.71	18.15	17.59

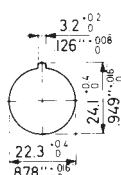
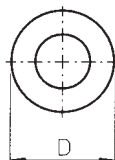
**Changeover Switch
Spring Return to Off,
20AMP, with Escutcheon**



A range of 3 position changeover rotary cam switches with 30° switching and spring return to centre 'OFF', comprising of switch body, escutcheon plate and handle or without escutcheon. Single hole Ø22mm mounting suitable for up to 6mm panel thickness.

Rated thermal current	20 Amp					
Nominal voltage	690 V					
Rated operational current	20 A (AC21A), 5 A (AC15)					
Motor rating AC-3	5.5kW at 440VAC					
Dielectric strength	6 kV					
Conforms to	IEC 947-3, EN60947-3, VDE 0660 part 107					
Dimensions (mm)	L	A	B	C	M	D
1pole	31.7	49	43	6 max	20	39
2 pole	41.2	49	43	6 max	20	39
3 pole	50.7	49	43	6 max	20	39

**Changeover Switch
Spring Return to Off,
20AMP, without Escutcheon**



Stock No.	Manf Ref'	Type	Unit Price		
			1-4	5-9	10-24
With Escutcheon Plate					
8901415	CA10A214620FT2	1 POLE	8.15	7.91	7.66
8901418	CA10A215620FT2	2 POLE	11.03	10.70	10.37
8901421	CA10A216620FT2	3 POLE	13.90	13.48	13.07
Without Escutcheon Plate					
8901424	CA10A214620FT1	1 POLE	7.54	7.31	7.09
8901427	CA10A215620FT1	2 POLE	10.42	10.11	9.79
8901430	CA10A216620FT1	3 POLE	13.29	12.89	12.49