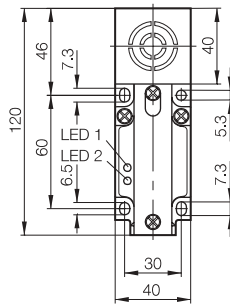
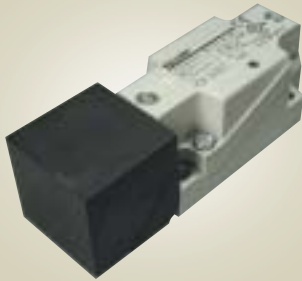


Quadraform 15mm Sensing, DC

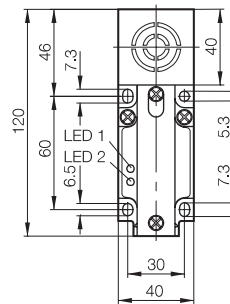
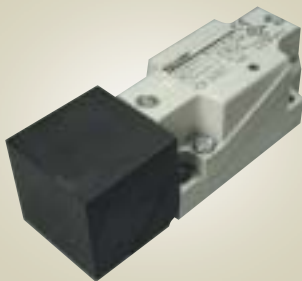


A flush mounted inductive proximity sensor in a quadraform housing, designed to sense ferrous & non-ferrous metals, featuring short circuit & reverse polarity protection. Sensor head is adjustable in 5 different positions through 270° for easy adaptation to any application.

Housing size	40mm x 40mm x 120mm (flush)
Nominal sensing range	15mm (steel), reduced for other metals
Supply voltage	10-55 volt DC
Rated output current	200 mA (transistor)
Off-state current	80 µAmp
Temperature	-25 to +70°C
Frequency	100 Hz
Built in LED's	Sensing & supply voltage indication
IP Rating	IP67
Body material	Fibreglass reinforced polyester
Connection type	Screw terminals

Stock No.	Manf Ref'	Type	Unit Price		
			1-4	5-9	10-24
2668112	BES517132M3H	PNP 1N/O+1N/C	34.00	32.98	31.96

Quadraform 20mm Sensing, DC

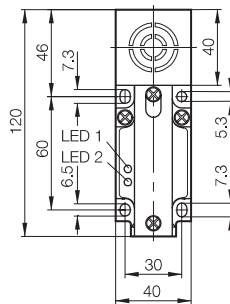
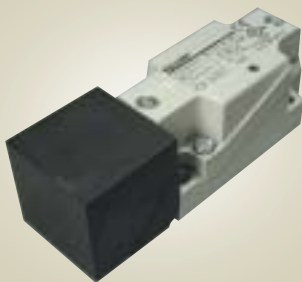


A flush mounted inductive proximity sensor in a quadraform housing, designed to sense ferrous & non-ferrous metals, featuring short circuit & reverse polarity protection. Sensor head is adjustable in 5 different positions through 270° for easy adaptation to any application.

Housing size	40mm x 40mm x 120mm (flush)
Nominal sensing range	20mm (steel), reduced for other metals
Supply voltage	10-55 volt DC
Rated output current	200 mA (transistor)
Off-state current	80 µAmp
Temperature	-25 to +70°C
Frequency	50 Hz
Built in LED's	Sensing & supply voltage indication
IP Rating	IP67
Body material	Fibreglass reinforced polyester
Connection type	Screw terminals

Stock No.	Manf Ref'	Type	Unit Price		
			1-4	5-9	10-24
2668115	BES517132M6H	PNP 1N/O+1N/C	51.00	49.47	47.94

Quadraform 40mm Sensing, DC

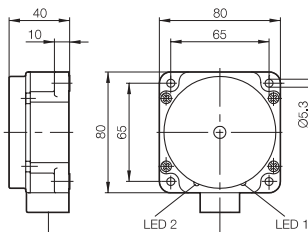


A non flush mounted inductive proximity sensor in a quadraform housing, designed to sense ferrous & non-ferrous metals, featuring short circuit & reverse polarity protection. Sensor head is adjustable in 5 different positions through 270° for easy adaptation to any application.

Housing size	40mm x 40mm x 120mm (non flush)
Nominal sensing range	40mm (steel), reduced for other metals
Supply voltage	10-55 volt DC
Rated output current	200 mA (transistor)
Off-state current	80 µAmp
Temperature	-25 to +70°C
Frequency	50 Hz
Built in LED's	Sensing & supply voltage indication
IP Rating	IP67
Body material	Fibreglass reinforced polyester
Connection type	Screw terminals

Stock No.	Manf Ref'	Type	Unit Price		
			1-4	5-9	10-24
2668118	BES517132M7H	PNP 1N/O+1N/C	51.00	49.47	47.94
2668121	BES517134M7H	NPN 1N/O+1N/C	51.00	49.47	47.94

Quadraform 40mm Sensing, DC



A flush mounted inductive proximity maxi-sensor in a quadraform housing, designed to sense ferrous & non-ferrous metals, featuring short circuit & reverse polarity protection.

Housing size	80mm x 80mm x 40mm (flush)
Nominal sensing range	40mm (steel), reduced for other metals
Supply voltage	10-55 volt DC
Rated output current	200 mA (transistor)
Off-state current	80 µAmp
Temperature	-25 to +70°C
Frequency	50 Hz
Built in LED's	Sensing & supply voltage indication
IP Rating	IP67
Body material	Fibreglass reinforced polyester
Connection type	Screw terminals

Stock No.	Manf Ref'	Type	Unit Price		
			1-4	5-9	10-24
2668124	BES517139M4H	PNP 1N/O+1N/C	73.47	71.27	69.06

< 20