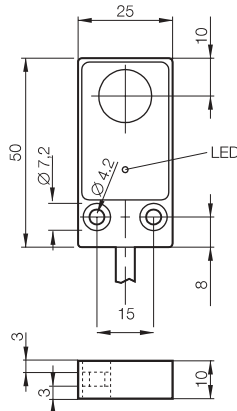


Quadraform 5mm Sensing, DC

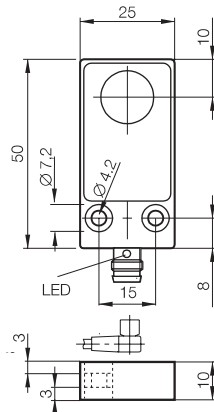
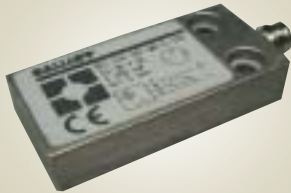


A flush mounted inductive proximity sensor in a quadraform housing, designed to sense ferrous & non-ferrous metals, featuring short circuit & reverse polarity protection. This sensor is ideal for automation & handling applications.

Housing size	25mm x 50mm x 10mm (flush)
Nominal sensing range	5mm (steel), reduced for other metals
Supply voltage	10-30 volt DC
Rated output current	200 mA (transistor)
Off-state current	80 μ Amp
Temperature	-25 to +70°C
Frequency	500 Hz
Built in LED	Yes
IP Rating	IP67
Body material	Aluminium alloy
Connection type	Pre-wired 3 core (0.34mm \Rightarrow) PVC cable, 3M (brown/+ve, black/output, blue/-ve)

Stock No.	Manf Ref'	Type	Unit Price		
			1-4	5-9	10-24
2668016	BES516347MOC3	PNP N/O	42.15	40.89	39.62

Quadraform 5mm Sensing, DC

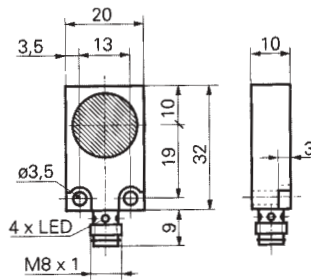


A flush mounted inductive proximity sensor in a quadraform housing, designed to sense ferrous & non-ferrous metals, featuring short circuit & reverse polarity protection. This sensor is ideal for automation & handling applications.

Housing size	25mm x 50mm x 10mm (flush)
Nominal sensing range	5mm (steel), reduced for other metals
Supply voltage	10-30 volt DC
Rated output current	200 mA (transistor)
Off-state current	80 μ Amp
Temperature	-25 to +70°C
Frequency	500 Hz
Built in LED	Yes
IP Rating	IP67
Body material	Aluminium alloy
Connection type	M8 connector, 3 wire type (brown/+ve, black/output, blue/-ve)

Stock No.	Manf Ref'	Type	Unit Price		
			1-4	5-9	10-24
2668019	BES516347MOC349	PNP N/O	42.15	40.89	39.62

Quadraform 5mm Sensing, DC

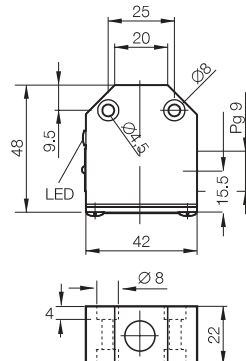
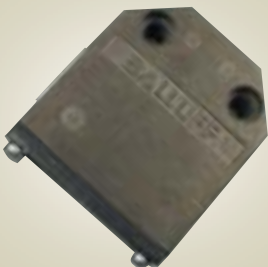


An inductive proximity sensor in an extra flat rectangular housing designed to sense ferrous & non-ferrous metals, featuring short circuit & reverse polarity protection. This sensor is ideal for automation & handling applications.

Housing size	20 x 32 x 10
Nominal sensing range	5mm (steel), reduced for other metals
Supply voltage	10-50 volt DC
Rated output current	200 mA (transistor)
Temperature	-25 to +75°C
Frequency	1000 Hz
Built in LED	4 quadrant LED red
IP Rating	IP67
Body material	Nickel plated brass
Connection type	M8 connector, 3 wire type (brown/+ve, black/output, blue/-ve)

Stock No.	Manf Ref'	Type	Unit Price		
			1-4	5-9	10-24
1501226	IFFM20P1501/S35L	PNP N/O	56.57	54.87	53.18

Quadraform 5mm Sensing, DC



A flush mounted inductive proximity sensor in a quadraform housing, designed to sense ferrous & non-ferrous metals, featuring short circuit & reverse polarity protection. This sensor is ideal for automation & handling applications.

Housing size	42mm x 48mm x 22mm (flush)
Nominal sensing range	5mm (steel), reduced for other metals
Supply voltage	10-30 volt DC
Rated output current	200 mA (transistor)
Off-state current	80 μ Amp
Temperature	-25 to +70 °C
Frequency	500 Hz
Built in LED	Yes
IP Rating	IP67
Body material	Aluminium alloy
Connection type	Screw terminals

Stock No.	Manf Ref'	Type	Unit Price		
			1-4	5-9	10-24
2668013	BES516346H2Y	PNP N/O	53.34	51.74	50.14
2668010	BES516344H2Y	NPN N/O	53.34	51.74	50.14