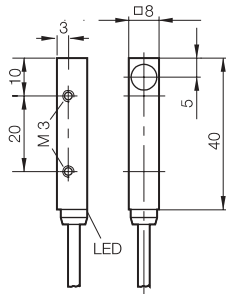
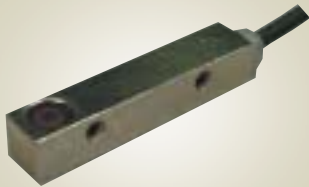


M8 x M8, 2mm Top Sensing, DC

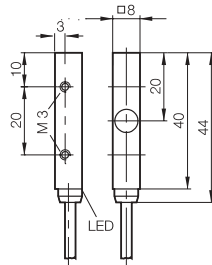
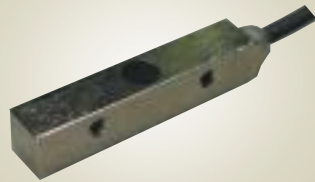


A flush mounted inductive proximity sensor in a 8mm square housing, designed to sense ferrous & non-ferrous metals, featuring short circuit & reverse polarity protection. This sensor is ideal for automation & handling applications.

| | |
|-----------------------|---|
| Housing size | 8mm x 8mm x 40mm (flush) |
| Nominal sensing range | 2mm (steel), reduced for other metals |
| Supply voltage | 10-30 volt DC |
| Rated output current | 200 mA (transistor) |
| Off-state current | 80 µAmp |
| Temperature | -25 to +70°C |
| Frequency | 1000 Hz |
| Built in LED | Yes |
| IP Rating | IP65 |
| Body material | Nickel plated zinc |
| Connection type | Pre-wired 3 core (0.14mm ²) PVC cable, 5M (brown/+ve, black/output, blue/-ve) |

| Stock No. | Manf Ref' | Type | Unit Price | | |
|-----------|-------------------|---------|------------|-------|-------|
| | | | 1-4 | 5-9 | 10-24 |
| 2668166 | BESQ08ZCPSC20BBV5 | PNP N/O | 38.15 | 37.01 | 35.86 |

M8 x M8, 2mm Mid Sensing, DC

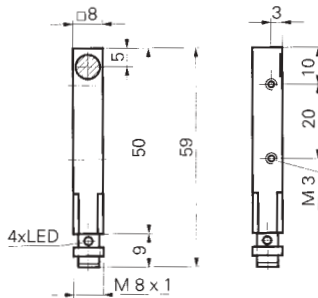
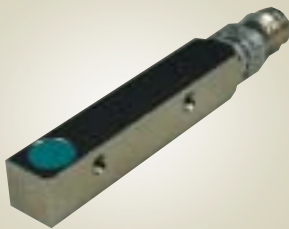


A flush mounted inductive proximity sensor in a 8mm square housing, designed to sense ferrous & non-ferrous metals, featuring short circuit & reverse polarity protection. This sensor is ideal for automation & handling applications.

| | |
|-----------------------|---|
| Housing size | 8mm x 8mm x 44mm (flush) |
| Nominal sensing range | 2mm (steel), reduced for other metals |
| Supply voltage | 10-30 volt DC |
| Rated output current | 200 mA (transistor) |
| Off-state current | 80 µAmp |
| Temperature | -25 to +70°C |
| Frequency | 1000 Hz |
| Built in LED | Yes |
| IP Rating | IP65 |
| Body material | Nickel plated zinc |
| Connection type | Pre-wired 3 core (0.14mm ²) PVC cable, 5M (brown/+ve, black/output, blue/-ve) |

| Stock No. | Manf Ref' | Type | Unit Price | | |
|-----------|-------------------|---------|------------|-------|-------|
| | | | 1-4 | 5-9 | 10-24 |
| 2668169 | BESQ08ZEPSC20BBV5 | PNP N/O | 38.15 | 37.01 | 35.86 |

M8 x M8, 2mm Sensing, DC High Speed

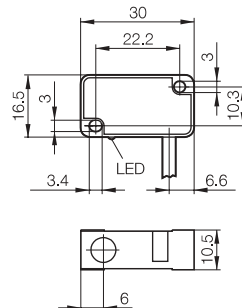


An inductive proximity sensor in a 8mm square housing, designed to sense ferrous & non-ferrous metals, featuring short circuit & reverse polarity protection. This sensor is ideal for automation & handling applications.

| | |
|-----------------------|---|
| Housing size | 8mm x 8mm, 59mm long |
| Nominal sensing range | 2mm (steel), reduced for other metals |
| Supply voltage | 10-30 volt DC |
| Rated output current | 200 mA (transistor) |
| Temperature | -25 to +75°C |
| Frequency | 1000 Hz |
| Built in LED | 4 quadrant LED red |
| IP Rating | IP67 |
| Body material | Nickel plated brass |
| Connection type | M8 connector, 3 wire type (brown/+ve, black/output, blue/-ve) |

| Stock No. | Manf Ref' | Type | Unit Price | | |
|-----------|--------------------|---------|------------|-------|-------|
| | | | 1-4 | 5-9 | 10-24 |
| 1501202 | IFFM08P1701/O1S35L | PNP N/O | 58.38 | 56.63 | 54.88 |

V3 Style, 2mm Sensing, DC



A flush mounted inductive proximity sensor in a V3 style housing, designed to sense ferrous & non-ferrous metals, featuring short circuit & reverse polarity protection. This sensor is ideal for automation & handling applications.

| | |
|-----------------------|---|
| Housing size | 16.5mm x 30mm x 10mm (flush) |
| Nominal sensing range | 2mm (steel), reduced for other metals |
| Supply voltage | 10-30 volt DC |
| Rated output current | 200 mA (transistor) |
| Off-state current | 80 µAmp |
| Temperature | -25 to +70°C |
| Frequency | 1500 Hz |
| Built in LED | Yes |
| IP Rating | IP65 |
| Body material | Fibreglass reinforced polyester |
| Connection type | Pre-wired 3 core (0.14mm ²) PVC cable, 3M (brown/+ve, black/output, blue/-ve) |

| Stock No. | Manf Ref' | Type | Unit Price | | |
|-----------|---------------|---------|------------|-------|-------|
| | | | 1-4 | 5-9 | 10-24 |
| 2668148 | BES517398NOC3 | PNP N/O | 28.93 | 28.06 | 27.19 |
| 2668139 | BES517352NOL3 | NPN N/C | 30.18 | 29.27 | 28.37 |