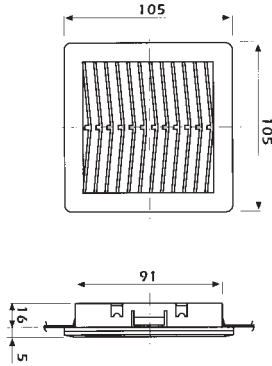


Filters

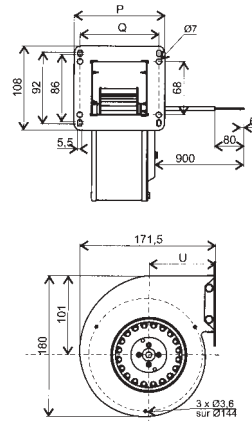
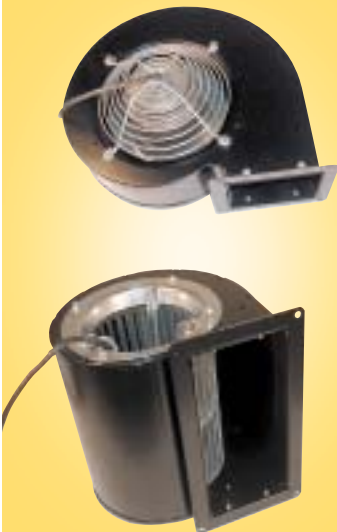


Matching air outlet filters will provide an exit or entry for circulating air through switchgear cabinets and electronic systems. The filters are made from synthetic fibre and are sealed to IP54. They provide an EU4 filtering degree with 94% separation to the DIN 24185 standard.

Spare media is also available, please enquire with sales.

Stock No.	Manf Ref'	Cut-out	Unit Price		
			1-9	10-24	25+
7801202	FPF08KRG	92MM ² FILTER	10.00	9.30	8.70
7801208	FPF12KRG	125MM ² FILTER	11.00	10.23	9.57
7801211	FPF13KRG	185MM ² FILTER	14.00	13.02	12.18
7801223	FPF15KRG	223MM ² FILTER	18.00	16.74	15.66
7801229	FPF20KRG	291MM ² FILTER	24.00	22.32	20.88

Single & Double Inlet Centrifugal Blowers



Dimensions for M03-19
Other fans are of larger dimension

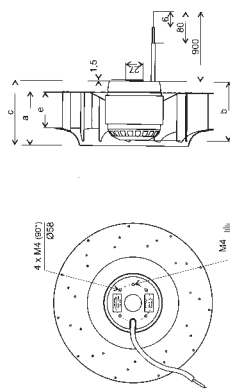
High performance blower with integrated external rotor motor and impeller allowing a compact design. Ball bearings ensure quiet and reliable operation with the fan mounted in any orientation. Windings are protected by thermal cut-out.

Voltage	230VAC, 50/60Hz
Max. air temperature	60°C
IP Rating	IP44
Scroll	Steel painted black
Impeller material	Galvanised steel
Impeller type	Forward curved multi-vane

Note:
 • To avoid motor overload the Y45-03 must be operated against a minimum static pressure of 400pascals, the N11-02 must be operated against a minimum static pressure of 150pascals, the R10-12 must be operated against a minimum static pressure of 210pascals.
 • 4 pole, low speed versions are available for low pressure, low noise applications.

Stock No.	Manf Ref'	Type	Max. Air Flow	Max. Pressure	Capacitor	Noise	Unit Price		
							1-9	10-24	25+
7801133	M03-19	SINGLE INLET	250 m ³ /h	320 Pascals	2 µF	55dBA	85.00	80.75	78.20
7801136	N05-48	SINGLE INLET	330 m ³ /h	350 Pascals	2 µF	51dBA	94.00	89.30	86.48
7801139	N05-56	SINGLE INLET	475 m ³ /h	480 Pascals	4 µF	58dBA	128.00	121.60	117.76
7801142	N05-58	SINGLE INLET	610 m ³ /h	540 Pascals	6 µF	67dBA	165.00	156.75	151.80
7801145	Y45-03	SINGLE INLET	690 m ³ /h	780 Pascals	8 µF	70dBA	185.00	175.75	170.20
7801148	Q02-08	DOUBLE INLET	395 m ³ /h	280 Pascals	2.5 µF	53dBA	95.00	90.25	87.40
7801151	N05-37	DOUBLE INLET	705 m ³ /h	420 Pascals	4 µF	54dBA	137.00	130.15	126.04
7801154	N11-02	DOUBLE INLET	800 m ³ /h	545 Pascals	6 µF	60dBA	149.00	141.55	137.08
7801157	R10-12	DOUBLE INLET	810 m ³ /h	670 Pascals	INCLUDED	59dBA	195.00	185.25	179.40

Backward Curved Centrifugal Fans



Very versatile fans which can be operated with or without a scroll housing. Ideal for systems which require a high pressure development.

Manf. Ref	I06-18	T11-01	H06-16	H06-17
Diameter	Ø195	Ø220	Ø225	Ø250
Max. Air flow (m ³ /h)	545	900	1015	1480
Max. Pressure (pascals)	300	380	460	565
Capacitor (µF)	2	3	2.5	6
Noise (dBA)	60	69	68	74
Input power (W)	58	87	97	189
Max. air temperature	70°C	60°C	70°C	50°C
Impeller material	Plastic	Plastic	Galv steel	Galv steel
Impeller type	Backward curved multi-vane			
IP Rating	IP44			

Stock No.	Manf Ref'	Air Flow	Unit Price		
			1-9	10-24	25+
7801160	I06-18	545 m ³ /h	54.00	51.30	49.68
7801163	T11-01	900 m ³ /h	73.00	69.35	67.16
7801166	H06-16	1015 m ³ /h	88.00	83.60	80.96
7801169	H06-17	1480 m ³ /h	120.00	114.00	110.40