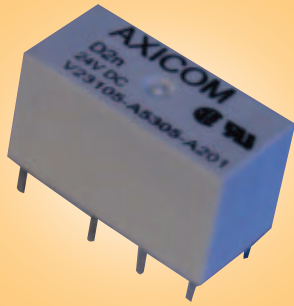
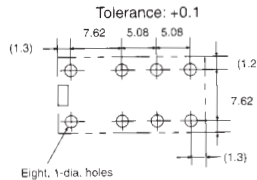


**D2n 400mW Coil BT47 style  
3A, DPCO**



Terminal Arrangements (bottom view)



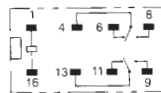
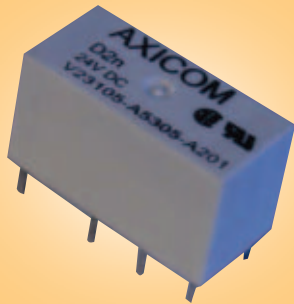
Board Layout

A BT47/51 style pcb relay with DPCO contacts capable of switching 3A down to dry circuit. This relay is fully sealed.

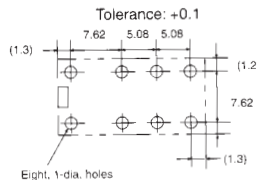
- Contact arrangement Double pole change over
- Contact material Silver nickel gold plated
- Contact rating 3A at 250Vac, 30Vdc, Max dc 250Vdc derated
- Contact load min 10 mV
- Coil resistance.ohm 62 (5V), 360 (12V), 1440 (24V)
- Operate / release time 5/2.5 mS
- Nominal coil power 400 mW
- Mechanical switching life 15 Million
- Dielectric strength 1000 Vrms
- Temperature -25°C to + 60°C
- Approvals ul, vde, csa
- L = 20.3, W = 10.1, H = 11.45

Stock No.	Manf Ref'	Type	Unit Price		
			1-24	25-99	100+
4954139	V23105-A5401-A201	DPCO-5VDC	1.70	1.53	1.45
4954137	V23105-A5403-A201	DPCO-12VDC	1.70	1.53	1.45
4954135	V23105-A5405-A201	DPCO-24VDC	1.70	1.53	1.45

**D2N 150mW Coil BT47 style  
3A, DPCO**



Terminal Arrangements (bottom view)



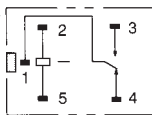
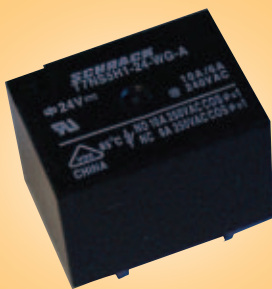
Board Layout

A BT47/51 style pcb relay with sensitive coil, DPCO contacts capable of switching 3A down to dry circuit. This relay is fully sealed.

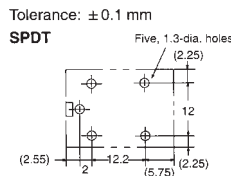
- Contact arrangement Double pole changeover
- Contact material Silver nickel gold plated
- Contact rating 3A at 230Vac, 30Vdc, Max dc 250Vdc derated
- Contact load min 10mV
- Coil resistance.ohm 167 (5V), 960 (12V), 3480 (24V)
- Operate / release time 5/2.5 mS
- Nominal coil power 150 mW
- Mechanical switching life 15 Million
- Dielectric strength 1000 Vrms
- Temperature -25°C to + 60°C
- Approvals ul, vde, csa
- L = 20.3, W = 10.1, H = 11.45

Stock No.	Manf Ref'	Type	Unit Price		
			1-24	25-99	100+
4954140	V23105-A5001-A201	DPCO-5VDC	2.50	2.25	2.12
4954141	V23105-A5003-A201	DPCO-12VDC	2.50	2.25	2.12
4954143	V23105-A5005-A201	DPCO-24VDC	2.50	2.25	2.12

**T7N  
10A, SPCO**



Terminal Arrangements (bottom view)



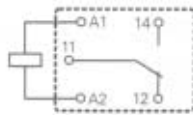
Board Layout

A miniature pcb relay, fully sealed offering competitive solution to switching loads to 10A with max switching to 100 vdc, albeit derated.

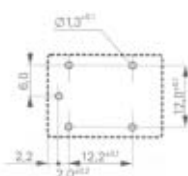
- Contact arrangement Single pole changeover
- Contact material Silver tin oxide
- Contact rating 10A n/o, 3A n/c at 230Vac, 30Vdc, Max dc 100Vdc
- Contact load min 100(6), 400(12V), 1600(24V)
- Coil resistance.ohm 100(6), 400(12V), 1600(24V)
- Operate / release time 10/5 mS
- Nominal coil power 360mW
- Mechanical switching life 10 Million
- Dielectric strength 2000 Vrms
- Temperature -40°C to + 85°C
- Approvals ul, vde, csa
- L = 22.5, W = 16.5, H = 16.9

Stock No.	Manf Ref'	Type	Unit Price		
			1-24	25-99	100+
4952734	T7NS5D4-6	SPCO-6VDC	0.80	0.72	0.68
4952736	T7NS5D4-12	SPCO-12VDC	0.80	0.72	0.68
4952928	T7NS5D4-24	SPCO-24VDC	0.80	0.72	0.68

**LN Series  
16A, SPCO**



Terminal Arrangements (bottom view)



Board Layout

A miniature pcb relay offering a 16A capability with same footprint as T7N series. Flux tight sealed.

- Contact arrangement Single pole changeover
- Contact material Silver tin oxide
- Continuous current 16A at 230 / 400Vac
- Contact load min 10/5 mS
- Operate / release time 10/5 mS
- Nominal coil power 400mW
- Coil resistance.ohm 90(6Vdc), 360(12Vdc), 1440(24Vdc)
- Mechanical life 10 Million
- Dielectric strength 2000 Vrms
- Temperature -40°C to + 75°C
- Approvals VDE, UL, CSA
- L = 20.2, W = 16.5, H = 20.2

Stock No.	Manf Ref'	Type	Unit Price		
			1-24	25-99	100+
4954672	LN313006	SPCO-6VDC	1.35	1.22	1.15
4954674	LN313012	SPCO-12VDC	1.35	1.22	1.15
4954676	LN313024	SPCO-24VDC	1.35	1.22	1.15