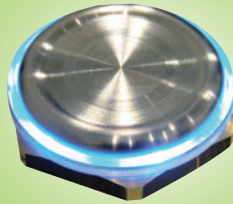


**Touch Sensor
19mm Cutout**



Halo Kit



ActiveMetal is a new resonant mode acoustic technology from ITW switches that allows a rugged pushbutton switch to be constructed with no moving parts. Unlike other technologies these products are manufactured from solid metal making them very rugged and allowing a waterproof rating to IP68, limited only by the panel seal. These switches provide reliable sensing of a gloved hand and may be factory programmed to provide higher or lower sensitivity if required. The switches are available in stainless steel, a lower cost zinc alloy or anodized aluminium. The switching options are momentary or alternate action, with either a logic level output (digital) or open collector transistor. These switches are ideal for high security or vandal proof applications needing long life. An attractive halo kit is also available to provide ring illumination around the bezel in either red, blue, green or yellow in 5V, 12V or 24Vdc.

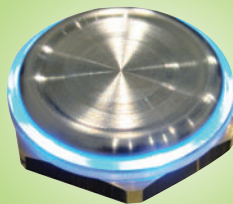
Operating voltage	5Vdc, or 10 to 24Vdc
Output current max	20mA digital, 100mA sinking
IP Rating	IP68
Temperature	-40°C to +85°C
Connection	Flying leads 12" 24AWG
Housing	Diecast Zinc, Stainless Steel, Aluminium
Dimensions	Bezel 28.0mm, depth 15.8, cutout 19mm with flat

Stock No.	Manf Ref'	Housing	Finish	Output Type	Action	Supply	Unit Price		
							1-9	10-24	25+
9351050	T01-041901-006-NL-M-2	DIECAST ZINC ALLOY 19MM	BRIGHT CHROME	DIGITAL	MOMENTARY	5VDC	15.93	15.13	14.34
9351051	T01-041901-006-NL-A-2	DIECAST ZINC ALLOY 19MM	BRIGHT CHROME	DIGITAL	ALTERNATE	5VDC	15.93	15.13	14.34
9351052	T01-041902-005-NO-M-2	DIECAST ZINC ALLOY 19MM	SATIN	NORMALLY OPEN, OPEN COLLECTOR	MOMENTARY	5VDC	15.98	15.18	14.38
9351053	T01-041903-005-NO-M-2	DIECAST ZINC ALLOY 19MM	SATIN	NORMALLY OPEN, OPEN COLLECTOR	MOMENTARY	10-24VDC	16.22	15.41	14.60
9351054	T01-011901-001-NL-M-2	STAINLESS STEEL 19MM	STAINLESS STEEL	DIGITAL	MOMENTARY	5VDC	32.09	31.29	30.49
9351056	T01-011901-001-NL-A-2	STAINLESS STEEL 19MM	STAINLESS STEEL	DIGITAL	ALTERNATE	5VDC	32.09	31.29	30.49
9351057	T01-011902-001-NO-M-2	STAINLESS STEEL 19MM	STAINLESS STEEL	NORMALLY OPEN, OPEN COLLECTOR	MOMENTARY	5VDC	32.00	31.20	30.40
9351058	T01-011903-001-NO-M-2	STAINLESS STEEL 19MM	STAINLESS STEEL	NORMALLY OPEN, OPEN COLLECTOR	MOMENTARY	10-24VDC	33.62	32.78	31.94
9351081	TBA	HALO KIT 19MM 5VDC BLUE					5.82	5.53	5.24

**Touch Sensor
22mm Cutout**



Halo Kit



ActiveMetal is a new resonant mode acoustic technology from ITW switches that allows a rugged pushbutton switch to be constructed with no moving parts. Unlike other technologies these products are manufactured from solid metal making them very rugged and allowing a waterproof rating to IP68, limited only by the panel seal. These switches provide reliable sensing of a gloved hand and may be factory programmed to provide higher or lower sensitivity if required. The switches are available in stainless steel, a lower cost zinc alloy or aluminium. The switching options are momentary or alternate action, with either a logic level output (digital) or open collector transistor. These switches are ideal for high security or vandal proof applications needing long life. An attractive halo kit is also available to provide ring illumination around the bezel in either red, blue, green or yellow in 5V, 12V or 24Vdc.

Operating voltage	5Vdc, or 10 to 24Vdc
Output current max	20mA digital, 100mA sinking
IP Rating	IP68
Temperature	-40°C to +85°C
Connection	Flying leads 12" 24AWG
Housing	Diecast Zinc, Stainless Steel, Aluminium
Dimensions	Bezel 31.0mm, depth 15.8, cutout 22mm with flat

Stock No.	Manf Ref'	Housing	Finish	Output Type	Action	Supply	Unit Price		
							1-9	10-24	25+
9351060	T01-042201-005-NL-M-2	DIECAST ZINC ALLOY 22MM	SATIN	DIGITAL	MOMENTARY	5VDC	17.31	16.44	15.58
9351061	T01-042202-006-NO-M-2	DIECAST ZINC ALLOY 22MM	BRIGHT CHROME	NORMALLY OPEN, OPEN COLLECTOR	MOMENTARY	5VDC	17.35	16.48	15.62
9351062	T01-042203-006-NO-M-2	DIECAST ZINC ALLOY 22MM	BRIGHT CHROME	NORMALLY OPEN, OPEN COLLECTOR	MOMENTARY	10-24VDC	17.58	16.70	15.82
9351063	T01-012201-001-NL-M-2	STAINLESS STEEL 22MM	STAINLESS STEEL	DIGITAL	MOMENTARY	5VDC	33.72	32.88	32.03
9351064	T01-012202-001-NO-M-2	STAINLESS STEEL 22MM	STAINLESS STEEL	NORMALLY OPEN, OPEN COLLECTOR	MOMENTARY	5VDC	33.72	32.88	32.03
9351065	T01-012203-001-NO-M-2	STAINLESS STEEL 22MM	STAINLESS STEEL	NORMALLY OPEN, OPEN COLLECTOR	MOMENTARY	10-24VDC	35.28	34.40	33.52
9351082	TBA	HALO KIT 22MM 5VDC BLUE					5.82	5.53	5.24