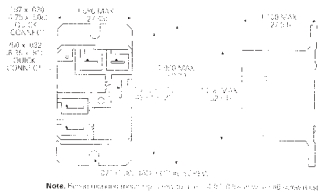


T9A Series, Flange Mounted, 20A, SPCO



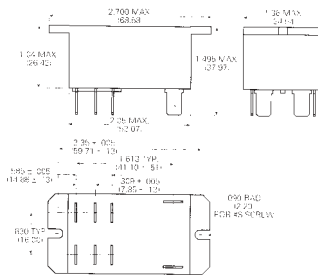
Note: Refer to the drawing for the correct pin configuration and terminal locations.

A flange mounted SPCO enclosed power relay with a 20 Amp switching capability. Load connections made via 6.35mm push-on terminals and safety wells will accept insulated female connectors. Particularly suitable for various industrial, commercial and residential applications.

- Contact arrangement Single pole changeover
- Contact material Silver cadmium oxide
- Contact rating N/O 20A at 240V ac, 20A at 28V dc
- Contact rating N/C 10A at 240V ac, 10A at 28V dc
- Operate / release time 15ms / 15ms
- Nominal coil power 1.0 W approx
- Mechanical switching life 10^5
- Dielectric strength 2.5kV ac (coil-contact)
- Temperature -55°C to + 85°C
- Terminals 6.35mm push-on
- Approvals UL, CSA

| Stock No. | Manf Ref ¹ | Type | Unit Price | | |
|-----------|-----------------------|------------|------------|-------|------|
| | | | 1-24 | 25-99 | 100+ |
| 4952367 | T9AP5D52-12 | SPCO-12VDC | 3.31 | 2.98 | 2.81 |
| 4952370 | T9AP5D52-24 | SPCO-24VDC | 3.31 | 2.98 | 2.81 |
| 4952373 | T9AP5D52-48 | SPCO-48VDC | 3.31 | 2.98 | 2.81 |

T92 Series, Flange Mounted, 30A, DP N/O

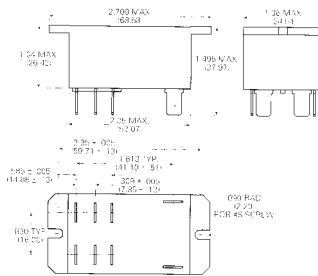


A flange mounted DP enclosed power relay with N/O contacts and a 30 Amp switching capability.

- Contact arrangement Normally open
- Contact material Silver cadmium oxide
- Contact rating 30A at 120/277V ac, 20A at 28V dc
- Operate / release time 15ms / 10ms
- Nominal coil power 1.7 W
- Mechanical switching life 5×10^6
- Dielectric strength 4kV ac (coil-contact)
- Temperature -40°C to + 85°C
- Terminals 6.35mm push-on
- Approvals UL, CSA

| Stock No. | Manf Ref ¹ | Type | Unit Price | | |
|-----------|-----------------------|---------------|------------|-------|------|
| | | | 1-24 | 25-99 | 100+ |
| 4952343 | T92P7D22-12 | DP N/O-12VDC | 6.60 | 5.94 | 5.61 |
| 4954105 | T92P7A22-115 | DP N/O-115VAC | 7.00 | 6.30 | 5.95 |
| 4954103 | T92P7A22-230 | DP N/O-230VAC | 7.00 | 6.60 | 5.95 |

T92 Series, Flange Mounted, 30A, DPCO, Sealed



A flange mounted DPCO power relay with a 30 Amp switching capability. Fully sealed for immersion cleaning.

- Contact arrangement Double pole changeover
- Contact material Silver cadmium oxide
- Contact rating 30A at 120/277V ac, 20A at 28V dc
- Normally open contact rated at 3A
- Operate / release time 15ms / 10ms
- Nominal coil power 1.7 W
- Mechanical switching life 5×10^6
- Dielectric strength 4kV ac (coil-contact)
- Temperature -40°C to + 65°C
- Terminals 6.35mm push-on
- Approvals UL, CSA

| Stock No. | Manf Ref ¹ | Type | Unit Price | | |
|-----------|-----------------------|-------------|------------|-------|------|
| | | | 1-24 | 25-99 | 100+ |
| 4952355 | T92S11D22-12 | DPCO-12VDC | 7.25 | 6.53 | 6.16 |
| 4952358 | T92S11D22-24 | DPCO-24VDC | 7.25 | 6.53 | 6.16 |
| 4952346 | T92S11A22-120 | DPCO-120VAC | 8.05 | 7.25 | 6.84 |
| 4952349 | T92S11A22-240 | DPCO-240VAC | 8.05 | 7.25 | 6.84 |

Tolerance: +0.1

7.62 5.08 5.08

1.3)



(1.2)