

**Millenium 3
12 I/O Programmable Relay**



H = 90mm, W = 72mm, D = 60mm

**Millenium 3
20 I/O Programmable Relay**



H = 90mm, W = 125mm, D = 60mm

The Crouzet Millenium 3 is a programmable relay designed as an alternative to hard wiring items such as timers, clocks and relays, but with programming software far simpler than more complex PLC's. The unit can be programmed by simply drawing your electrical circuit diagram on a computer screen and then downloading the connections into the Millenium. Optional programming also by front of panel keypad.

Key Features

- Logic functions - AND, OR, NAND, NOR, XOR, NOT
- Timers - ON delay A / OFF delay C, impulse BW & BH, Pulse generator Li
- Pulse Counter up/down
- Hours & minutes counter
- Analogue input 0-10V, gain adjust, compare, trigger
- 24hr Time clock
- Relay outputs, solid state outputs (with pulse width modulation option)
- EEPROM memory module for transferring data from one millenium to another.
- Battery back-up of data in the event of a power failure: 10 years
- DIN rail or panel mounting

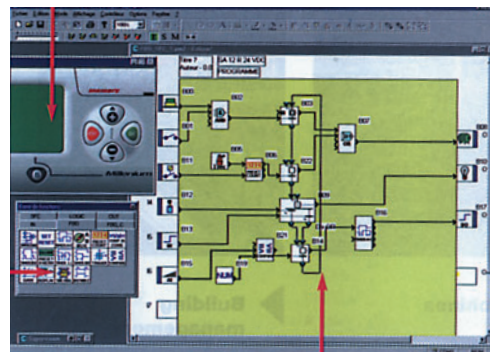
Supply voltage 100-240VAC or 24VDC +20% - 15%

Input voltage 0-10VDC
 Input impedance >10k Ohms (24VDC model)
 Input precision ± 5% (0.5VDC)
 Input resolution 8 bit

Relay output voltage 250VAC, 30VDC
 Output current rating 8A max, 10mA min. at 5VDC
 Status indicator Yes on LCD screen
 Temperature -5°C to 50°C
 Approvals UL, CE, cUL

Starter Kits (each kit includes)

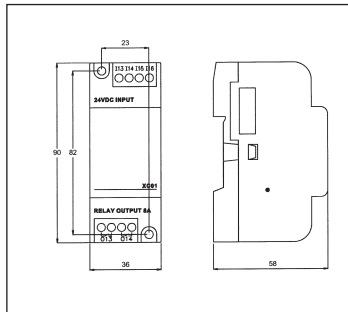
- A standard Millenium 3 with 12 I/O 24 Vdc (88 970 080) or 12 I/O 230 Vac (88 970 081)
- A PC/Millenium 3 USB Cable link
- A CD with the programming software



Computer 'SKETCH' System Screen



REMOTE PROBE TEMP SENSOR



VENT DUCT TEMPERATURE SENSOR



OUTDOOR TEMPERATURE SENSOR

Stock No.	Manf Ref'	Voltage	Inputs	Outputs	Unit Price		
					1-4	5-9	10+
12 I/O Models (Standard CD12 Series)							
3266393	88 970 041	24VDC	8	4 RELAY	80.19	77.78	75.38
3266396	88 970 043	100-240VAC	8	4 RELAY	80.19	77.78	75.38
3266399	88 970 042	24VDC	8	4 SOLID STATE/1 PWM	83.23	80.73	78.24
20 I/O Models (Standard CD20 Series)							
3266402	88 970 051	24VDC	12	8 RELAY	114.70	111.26	107.82
3266405	88 970 053	100-240VAC	12	8 RELAY	114.70	111.26	107.82
3266408	88 970 052	24VDC	12	8 SOLID STATE/4 PWM	118.76	115.20	111.63
26 I/O Models (Expandable XD26 Series) & Extension Modules							
3266411	88 970 161	24VDC	16	8 RELAY	137.03	132.92	128.81
3266414	88 970 163	100-240VAC	16	8 RELAY	137.03	132.92	128.81
3266417	88 970 162	24VDC	16	8 SOLID STATE/6 PWM	139.06	134.89	130.72
3266420	88 970 211	24VDC	4	2 RELAY	40.60	39.38	38.16
3266423	88 970 213	100-240VAC	4	2 RELAY	40.60	39.38	38.16
3266426	88 970 270	24VDC		ETHERNET MODULE	110.35	107.04	103.73
3266429	88 970 250	24VDC		MODBUS RS-485 MODULE	65.98	64.00	62.02
Starter Kits							
3266432	88 970 080	24VDC	8	4 RELAY	115.71	112.24	108.77
3266435	88 970 081	230VAC	8	4 RELAY	115.71	112.24	108.77
Accessories							
3266438	88 970 100	PROGRAMMING SOFTWARE ON CD ROM			10.15	9.85	9.54
3266441	88 970 108	EEPROM MEMORY MODULE			15.23	14.77	14.32
3266444	88 970 102	MILLENIUM 3 SERIAL LINK CABLE			40.60	39.38	38.16
3262361	88 750 160	IP67 FACEPLATE CD 12 SERIES			16.15	15.67	15.18
3266447	88 750 161	IP 67 FACEPLATE CD20 SERIES			18.84	18.27	17.71
3266450	89 750 150	ROOM TEMPERATURE SENSOR (-10°C to +40°C)			43.77	42.46	41.14
3266453	89 750 151	VENT DUCT TEMPERATURE SENSOR (-10°C to +60°C)			60.80	58.98	57.15
3266456	89 750 152	OUTDOOR TEMPERATURE SENSOR (-10°C to +40°C)			54.71	53.07	51.43
3266459	89 750 153	IMMERSION/REMOTE PROBE TEMP SENSOR (-10°C to +40°C)			63.23	61.33	59.44