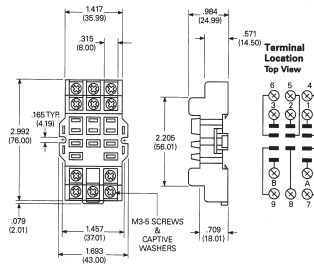
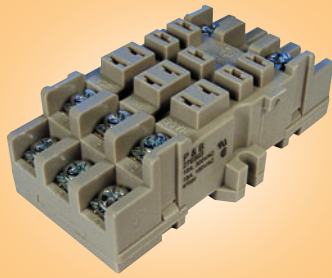


DIN Mounted Socket for KU Series Relays



A DIN rail, snap-mount socket with screw terminations and is designed to accept KU series and RM series relays with 4.75mm terminals. Constructed with a spring loaded latch to allow quick installation or removal. This socket is suitable for single, double & three pole relays.

Current rating 15A
Approvals UL, CSA

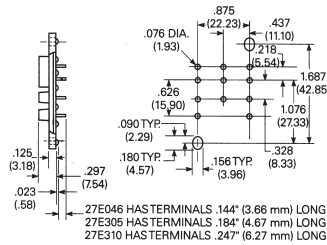
A clip-on type hold down spring (20C310) is available, please order separately

Stock No.	Manf Ref'	Type	Unit Price		
			1-24	25-99	100+
4951377	27E893	DIN SOCKET	6.86	6.17	5.83
4951257	20C318	SPRING	0.50	0.45	0.43

PCB Mounted Socket for KU Series Relays



Suggested Socket & PCB Layout



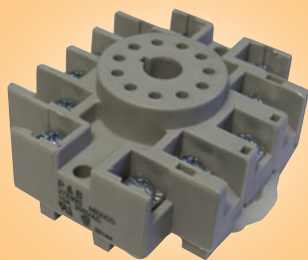
A PCB mounted socket with 3.66mm long pin terminals and is designed to accept KU series and RM series relays with 4.75mm terminals. This socket is suitable for single, double & three pole relays.

Current rating 15A
Approvals UL, CSA

A clip-on type hold down spring (20C254) is available, please order separately

Stock No.	Manf Ref'	Type	Unit Price		
			1-24	25-99	100+
4951290	27E046	PCB SOCKET	2.20	1.98	1.87
4951251	20C254	SPRING	0.30	0.27	0.26

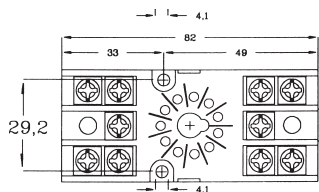
11 Pin Din Rail Socket for KRPA14



Genuine Potter & Brumfield Din rail socket rated to 10A at 300 VAC. Suitable for 11 pin relays such as KRPA and hermetically sealed KR14 series.

Stock No.	Manf Ref'	Type	Unit Price		
			1-24	25-99	100+
4951374	27E892	8 PIN DIN RAIL	6.55	5.90	5.57

8 & 11 Pin Relay Sockets With DIN Rail Adaptor



General purpose sockets suitable for 8 & 11 pin relays which can be surfaced mounted or used with an adaptor for DIN rail mounting. High quality bases offering excellent relay retention.

Rating 10A at 220V ac
Dielectric strength 2kV
Temperature -40° to + 70°C
IP Rating IP20

Hold down clip : 20C176 (Screw down)

Stock No.	Manf Ref'	Type	Unit Price		
			1-24	25-99	100+
4952631	170327	8 PIN SOCKET	3.39	3.05	2.88
4952628	170328	11 PIN SOCKET	3.75	3.38	3.19
4952667	170440	DIN ADAPTOR	0.44	0.40	0.37
4951230	20C176	CLIP	1.04	0.94	0.88