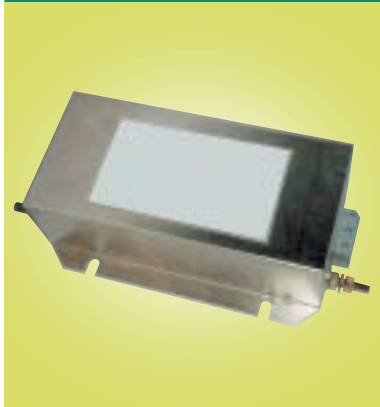
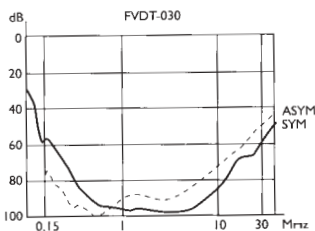


**FVDT Series
High Attenuation**



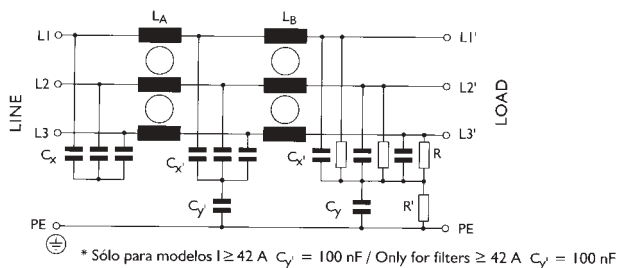
**Attenuation Graph for
FVDT-030B**



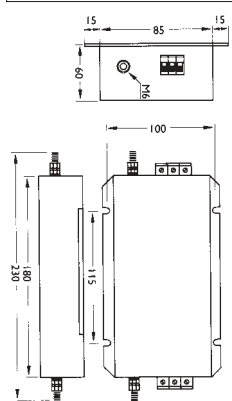
A range of 3 phase filters with high attenuation for variable speed drives. FVDT filters are available up to 900A rating.

Rated voltage 440 VAC, please enquire for 520VAC models
 Leakage current 15mA (7A), 18mA (16A)
 24mA (30A, 42A, 55A, 75A, 100A),
 Terminals Terminal block
 Approvals VDE (due end 2001)

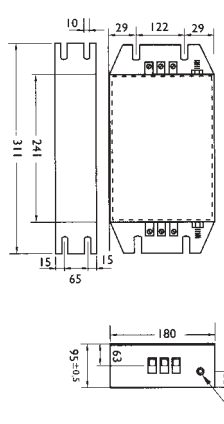
FVDT Series Circuit Schematic (only for filters ≥ 42A)



Case size 230 x 105 x 60



Case size 311 x 180 x 95

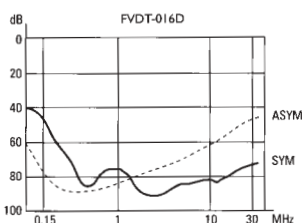


Stock No.	Manf Ref'	Current	Case size	Unit Price		
				1-4	5-9	10+
6101696	FVDT-007B	7A	190x105x55	62.62	56.98	51.35
6101702	FVDT-016B	16A	230x105x60	84.08	76.51	68.95
6101708	FVDT-030B	30A	274x140x58	113.31	103.11	92.91
6101714	FVDT-042B	42A	274x140x58	151.54	137.90	124.26
6101720	FVDT-055B	55A	311x180x95	158.39	144.13	129.88
6101726	FVDT-075B	75A	311x180x95	227.84	207.33	186.83
6101729	FVDT-100B	100A	351x180x95	273.51	248.89	224.28

**FVDT-D Series
Low Leakage Current
for Frequency Converters**



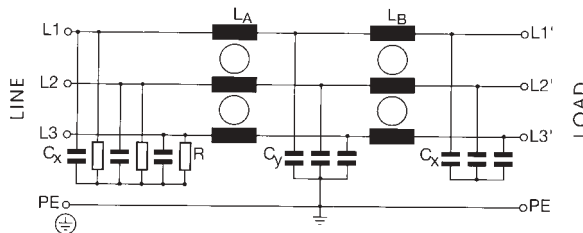
**Attenuation Graph for
FVDT-016D**



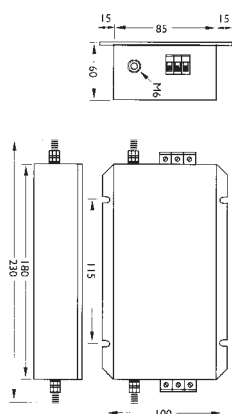
A range of 3 phase filters with low leakage current for variable speed drives.

Rated voltage 440 VAC, please enquire for 520VAC models
 Leakage current 0.6mA at 400V / 50Hz
 Terminals Terminal block
 Approvals VDE (due end 2001)

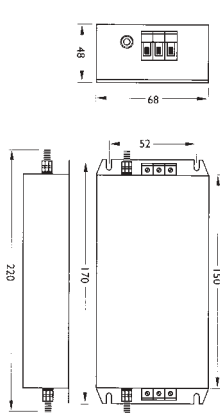
FVDT-D Series Circuit Schematic



Case size 38



Case size 34



Stock No.	Manf Ref'	Current	Case size	Unit Price		
				1-4	5-9	10+
6101672	FVDT-005DB	5A	34	55.14	50.18	45.21
6101678	FVDT-008DB	8A	34	59.94	54.55	49.15
6101684	FVDT-016DB	16A	38	75.47	68.68	61.89
6101690	FVDT-028DB	28A	38	91.05	82.86	74.66