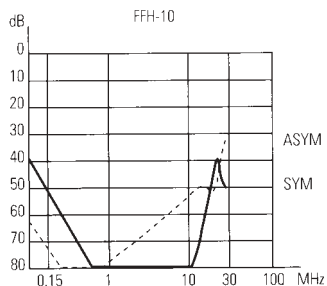


**FFH Series, 2 Stage Very High Attenuation**



**Attenuation Graph for FFH-10Z**

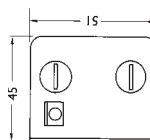


Single phase 2 stage very high attenuation chassis mounting filters suitable for AC variable speed drives.

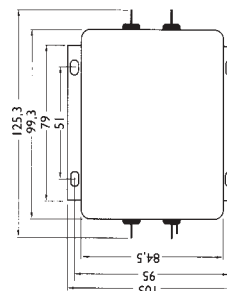
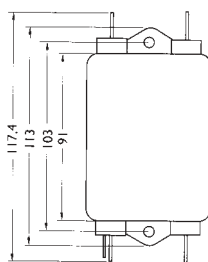
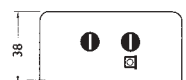
Rated voltage 250 VAC  
 Leakage current 0.5mA  
 Terminals 6.3mm push-on  
 Approvals VDE, UL (due end 200)

• All filters are also available with 2mtr flying leads, please consult sales.

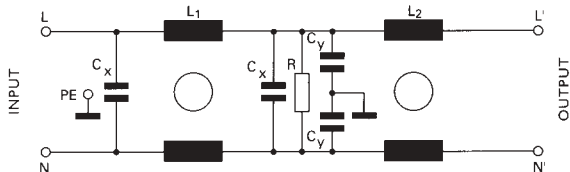
**Case size 6-3**



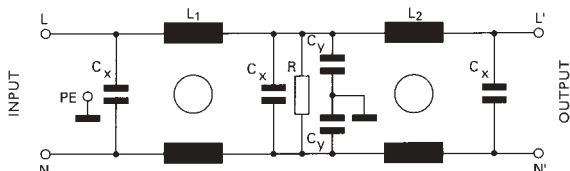
**Case size 8-0**



**FFH-1Z, FFH-3Z Series Circuit Schematic**



**FFH-6Z, FFH-10Z, FFH-12Z, FFH-16Z Series Circuit Schematic**



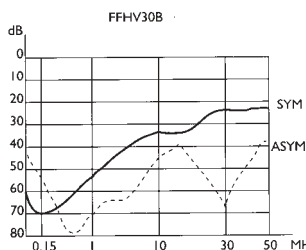
Case size 4-0, refer to FEH series  
 Case size 6-0, refer to FF series

Stock No.	Manf Ref <sup>1</sup>	Current	Case size	Unit Price		
				1-9	10-99	100+
6101234	FFH-1Z	1A	4-0	14.04	12.64	9.83
6101240	FFH-3Z	3A	6-0	14.63	13.17	10.24
6101246	FFH-6Z	6A	6-3	26.31	23.68	18.42
6101252	FFH-10Z	10A	6-3	27.39	24.65	19.17
6101255	FFH-12Z	12A	6-3	28.99	26.09	20.29
6101261	FFH-16Z	16A	8-0	28.99	26.09	20.29

**FFHV Series, 2 Stage for Variable Speed Drives**



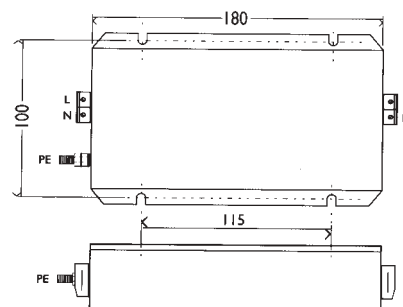
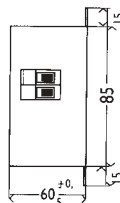
**Attenuation Graph for FFHV-30B**



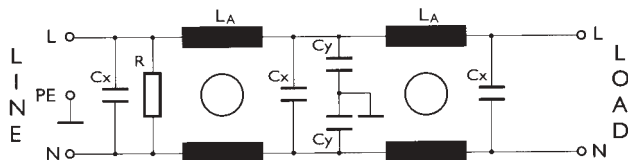
A chassis mounted, single phase filter, suitable for AC variable speed drives.

Rated voltage 250 VAC  
 Leakage current 3.4mA  
 Terminals Terminal block  
 Approvals VDE, UL

**Case size 47**



**FFHV Series Circuit Schematic**



Stock No.	Manf Ref <sup>1</sup>	Current	Case size	Unit Price		
				1-4	5-9	10+
6101837	FFHV-30B	30A	47	56.54	51.45	46.36