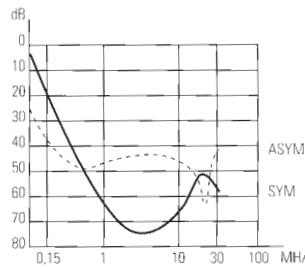


**FEH Series
High Attenuation Filters**



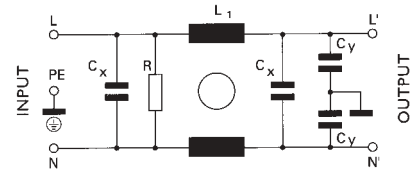
**Attenuation Graph for
FEH-3Z**



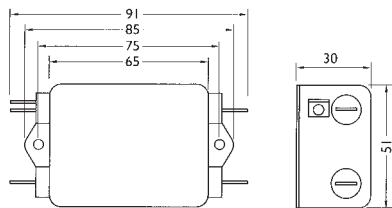
Single phase high attenuation chassis mounting filters which are suitable for a wide range of applications.

- Rated voltage 250 VAC
- Leakage current 0.5mA, 1mA (FEH-30W)
- Terminals 6.3mm (Z suffix), M4 screw (W suffix)
- Approvals VDE, UL (due end 200)
- All filters (20 & 30Amp excepted) are also available with 2mtr flying leads, please consult sales.

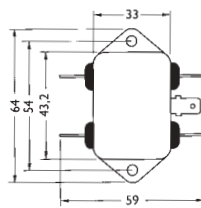
FEH Series Circuit Schematic



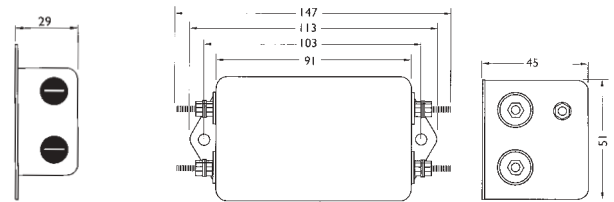
Case size 4-0



Case size 13-0



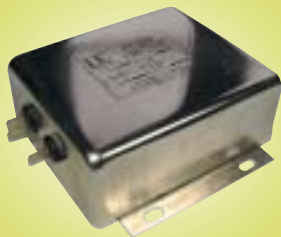
Case size 6-5



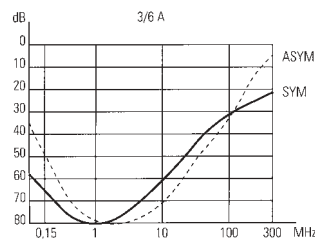
Case size 3-0, refer to FE series

Stock No.	Manf Ref ¹	Current	Case size	Unit Price		
				1-9	10-99	100+
6101177	FEH-1Z	1A	13-0	9.50	8.55	6.65
6101180	FEH-3Z	3A	13-0	9.50	8.55	6.65
6101183	FEH-6Z	6A	13-0	9.50	8.55	6.65
6101186	FEH-10Z	10A	13-0	9.50	8.55	6.65
6101201	FEH-16Z	16A	3-0	9.92	8.93	6.94
6101207	FEH-20Z	20A	4-0	13.71	12.34	9.60
6101210	FEH-30W	30A	6-5	28.27	25.44	19.79

**FF Series
Very High Attenuation**



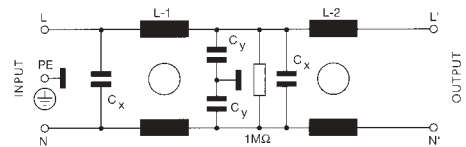
**Attenuation Graph for
FF-3Z, FF-6Z**



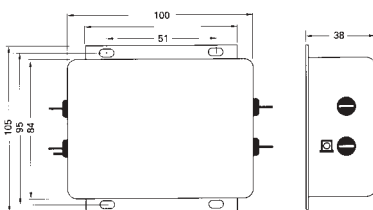
Single phase, very high attenuation, chassis mounting filters.

- Rated voltage 250 VAC
- Leakage current 0.25mA
- Terminals 6.3mm (Z suffix), M6 stud (W suffix)
- Approvals VDE, UL (pending on 20 Amp model)
- All filters (10 & 20Amp excepted) are also available with 2mtr flying leads, please consult sales.

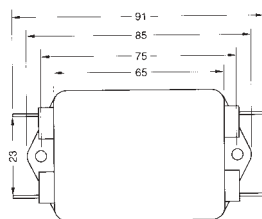
FF Series Circuit Schematic



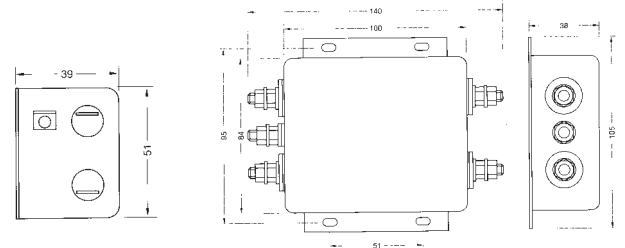
Case size 18-0



Case size 6-0



Case size 8-3



Case size 4-0, refer to FEH series

Stock No.	Manf Ref ¹	Current	Case size	Unit Price		
				1-9	10-99	100+
6101213	FF-3Z	3A	4-0	10.19	9.17	7.13
6101216	FF-6Z	6A	4-0	10.19	9.17	7.13
6101225	FF-10Z	10A	6-0	11.69	10.52	8.18
6101228	FF-20Z	20A	18-0	13.71	12.34	9.60
6101231	FF-20W	20A	8-3	35.67	32.10	24.97