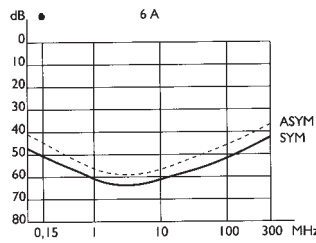


**FC Series
High Performance**



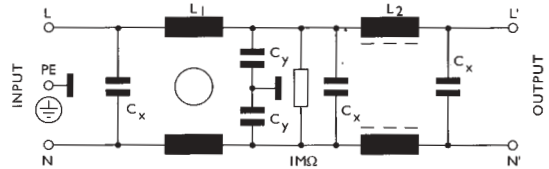
**Attenuation Graph for
FB-6Z**



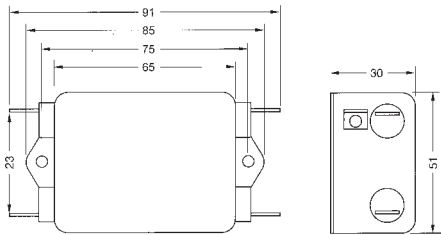
Two stage, single phase chassis mounting high performance filters which are suitable for a wide range of applications, such as small drives.

- Rated voltage 250 VAC
- Leakage current 0.5mA
- Terminals 6.3mm push-on
- Approvals VDE, UL
- All filters are also available with 2mtr flying leads, please consult sales.

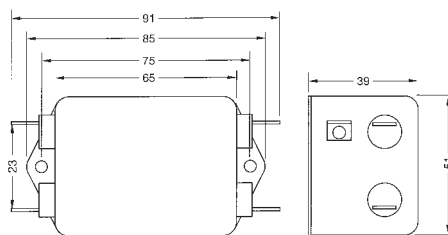
FC Series Circuit Schematic



Case size 4-0



Case size 6-0

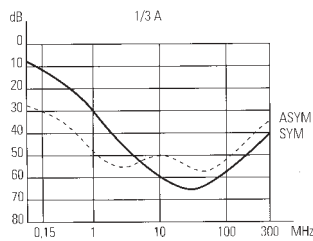


Stock No.	Manf Ref'	Current	Case size	Unit Price		
				1-9	10-99	100+
6101069	FC-3Z	3A	4-0	11.84	10.66	8.29
6101072	FC-6Z	6A	6-0	11.84	10.66	8.29
6101081	FC-10Z	10A	6-0	13.21	11.89	9.25

**FE Series
General Use Filters**



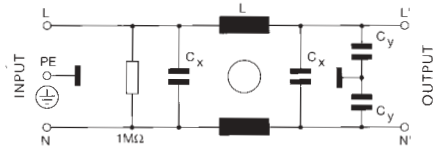
**Attenuation Graph for
FE-1Z & FE-3Z**



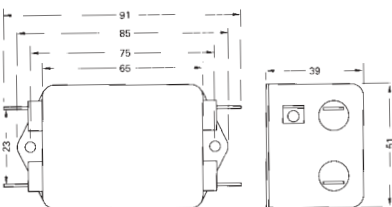
Single phase general purpose chassis mounting filters which are suitable for a wide range of applications.

- Rated voltage 250 VAC
- Leakage current 0.5mA
- Terminals 6.3mm (Z suffix), M6 screw (W suffix)
- Approvals VDE, UL (pending on 20 Amp model)
- All filters (20 & 30Amp excepted) are also available with 2mtr flying leads, please consult sales.

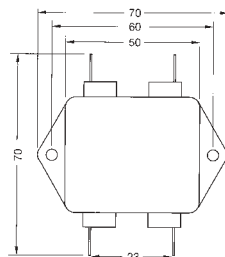
FE Series Circuit Schematic



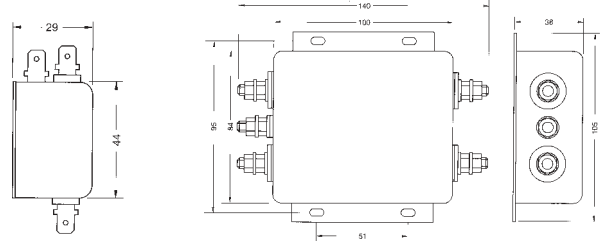
Case size 6-0



Case size 3-0



Case size 8-3



Stock No.	Manf Ref'	Current	Case size	Unit Price		
				1-9	10-99	100+
6101162	FE-10Z	10A	3-0	8.34	7.51	5.84
6101168	FE-20Z	20A	6-0	13.72	12.35	9.60
6101171	FE-20W	20A	8-3	30.58	27.52	21.41
6101174	FE-30W	30A	8-3	30.58	27.52	21.41