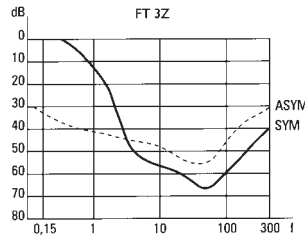


**FT Series  
Snap-in Panel Mount  
IEC Connector**



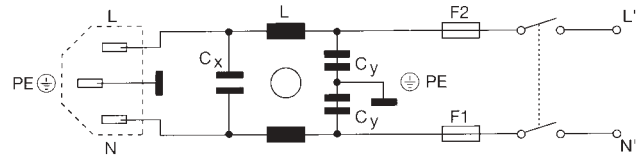
**Attenuation Graph for FT-3Z**



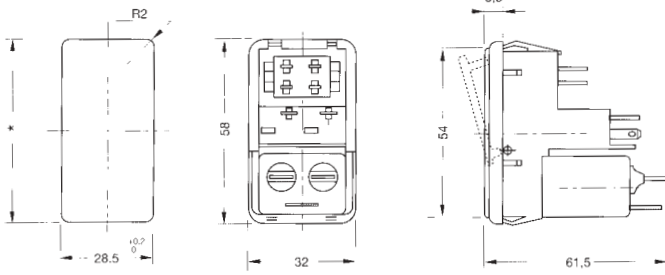
Single phase filters with fuse and switch and IEC connector. Snap-in panel mounting for fast easy assembly and they are suitable for a wide range of applications.

Rated voltage 250 VAC  
Leakage current 0.25mA  
Terminals 6.3mm push-ons  
Panel thickness 0.8mm - 3.2mm  
Approvals UL, VDE

**FT Series Circuit Schematic**



**Case size 18-0**



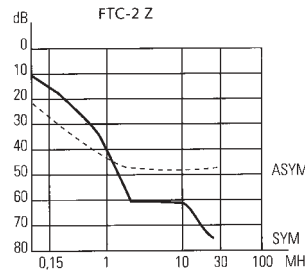
< 15

Stock No.	Manf Ref <sup>1</sup>	Current	Case size	Unit Price		
				1-9	10-99	100+
6101444	FT-1Z	1A	18-0	12.89	11.60	9.02
6101447	FT-3Z	3A	18-0	12.89	11.60	9.02
6101450	FT-6Z	6A	18-0	12.89	11.60	9.02

**FTC Series  
IEC, 2 Fuses & Switch**



**Attenuation Graph for FTC-2Z**



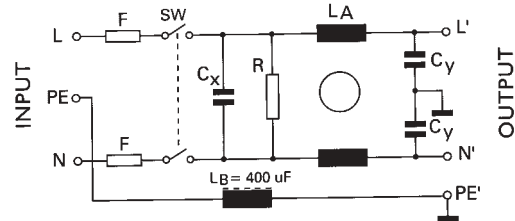
Single phase monoblock filters with IEC connector, 2 fuses (5x20mm) and switch. Suitable for panel mounting and used for a wide range of applications.

Rated voltage 250 VAC  
Leakage current 0.25mA (Z & ZC suffix), 5µA (ZM suffix)  
Terminals 6.3mm push-on  
Approvals UL, VDE

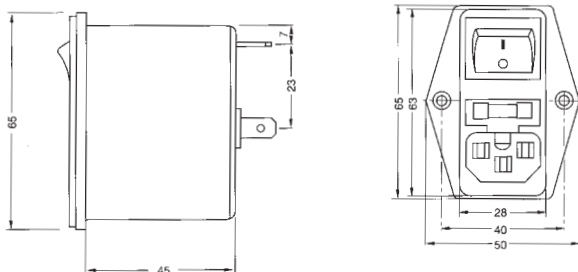
**Note:** Filters which are suffixed M are medical grade, and are for use on equipment in the medical industry.

**FTC-ZC Circuit Schematic**

(FTC-Z has no earth line choke, FTC-ZM has no earth line choke & no CY capacitors)



**Case size 45mm**



Stock No.	Manf Ref <sup>1</sup>	Current	Case size	Unit Price		
				1-9	10-99	100+
6101498	FTC-1Z	1A	45MM	13.17	11.85	9.22
6101501	FTC-2Z	2A	45MM	13.17	11.85	9.22
6101504	FTC-4Z	4A	45MM	13.17	11.85	9.22
6101507	FTC-6Z	6A	45MM	13.17	11.85	9.22
6101510	FTC-1ZC	1A	45MM	13.75	12.38	9.63
6101513	FTC-2ZC	2A	45MM	13.75	12.38	9.63
6101516	FTC-4ZC	4A	45MM	13.75	12.38	9.63
6101519	FTC-6ZC	6A	45MM	13.75	12.38	9.63
6101522	FTC-1ZM	1A	45MM	12.99	11.69	9.09
6101525	FTC-2ZM	2A	45MM	12.99	11.69	9.09
6101528	FTC-4ZM	4A	45MM	12.99	11.69	9.09
6101531	FTC-6ZM	6A	45MM	12.99	11.69	9.09