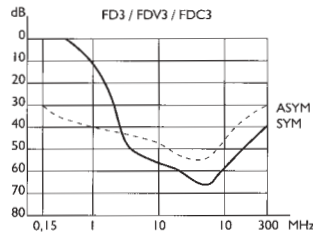


**FD/FDC Series
IEC Connector**



**Attenuation Graph for
FD-3Z**



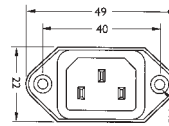
Single phase general purpose chassis mounting filters with IEC connector which are suitable for a wide range of applications.

Rated voltage 250 VAC
Leakage current 0.25mA
Earth line choke FDC only
Terminals 6.3mm push-on
Approvals UL, VDE

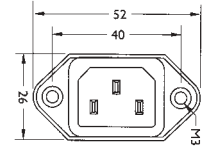
Note:

• All filters are also available with 2mtr flying leads, please consult sales

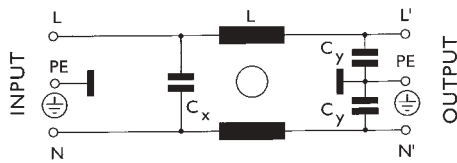
Case size 9-0



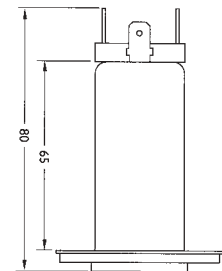
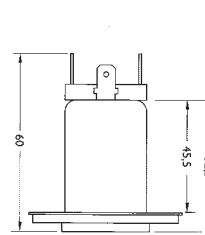
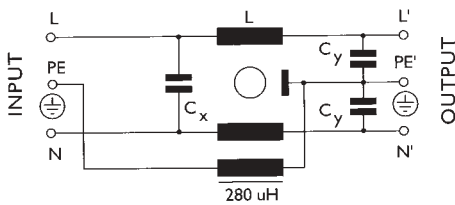
Case size 19-0



FD Series Circuit Schematic



FDC Series Circuit Schematic

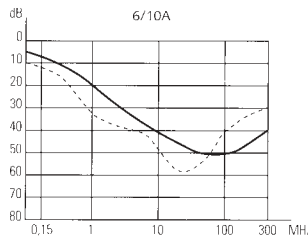


Stock No.	Manf Ref'	Current	Case size	Unit Price		
				1-9	10-99	100+
6101087	FD-1Z	1A	9-0	4.48	4.03	3.14
6101090	FD-3Z	3A	9-0	4.48	4.03	3.14
6101093	FD-6Z	6A	9-0	4.48	4.03	3.14
6101105	FD-10Z	10A	9-0	6.15	5.54	4.31
6101108	FDC-1Z	1A	19-0	5.83	5.25	4.08
6101111	FDC-3Z	3A	19-0	5.83	5.25	4.08
6101114	FDC-6Z	6A	19-0	5.83	5.25	4.08

**FI Series
IEC Connector**



**Attenuation Graph for
FI-6Z-41**



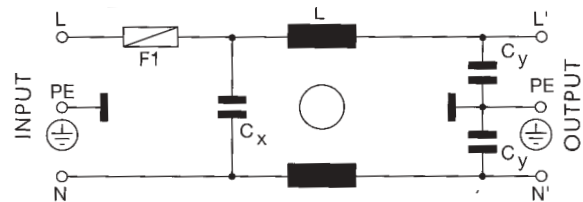
Single phase general purpose chassis mounting filters with IEC connector which are suitable for a wide range of applications. Inputs are protected by 1 fuse on the live line.

Rated voltage 250 VAC
Leakage current 0.25mA
Terminals 6.3mm push-on
Approvals UL, VDE

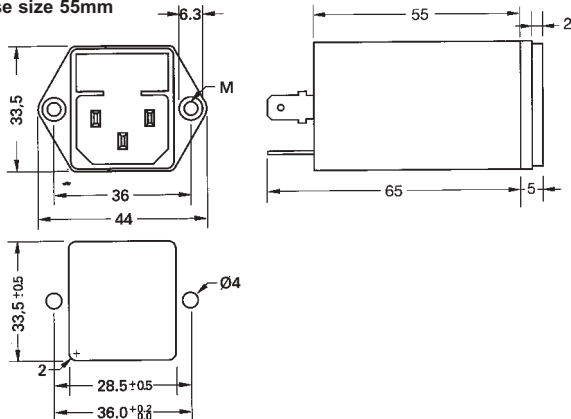
Note:

- Medical version available (no Cy capacitors, providing a leakage current of 5µA)
- Filters with 2 protection fuses also available.
- All filters are also available with 2mtr flying leads, please consult sales.

FI Series Circuit Schematic



Case size 55mm



Stock No.	Manf Ref'	Current	Case size	Unit Price		
				1-9	10-99	100+
6101291	FI-2Z-41	1A	41MM	6.61	5.95	4.63
6101294	FI-4Z-41	4A	41MM	6.61	5.95	4.63
6101297	FI-6Z-41	6A	41MM	6.61	5.95	4.63
6101300	FI-10Z-55	10A	55MM	7.96	7.16	5.57