

**EMC Series
High Attenuation
Compact Dual Stage**



Attenuation Graph for EMC Series

Minimum insertion loss in dB:
Line-to-ground in 50 ohm circuit

Current Rating	Frequency-MHz									
	.05	.07	.11	.15	1	2	10	20	30	
3A	6	6	3	16	65	66	62	60	59	
6A	6	6	2	15	65	67	65	62	63	
10A	5	2	13	24	72	72	56	50	48	
15A	3	1	12	22	70	68	57	54	53	
20A	2	2	11	21	58	57	63	55	52	
30A	2	2	14	22	47	52	60	48	43	

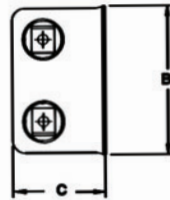
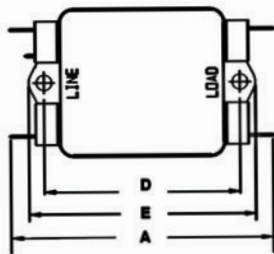
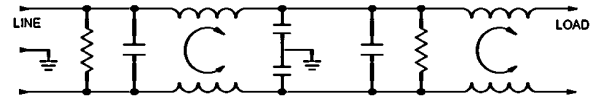
Line-to-line in 50 ohm circuit

Current Rating	Frequency-MHz									
	.05	.07	.11	.15	1	2	10	20	30	
3A	12	13	7	18	64	69	65	60	52	
6A	12	12	8	27	61	61	59	56	54	
10A	14	15	12	33	54	58	47	34	36	
15A	16	16	13	34	61	52	36	35	23	
20A	17	19	15	37	67	62	36	32	30	
30A	17	19	14	40	62	53	30	28	26	

Single phase dual stage compact chassis mount rfi filter with high attenuation.

Rated voltage 120/250 VAC
 Leakage current 15A and 20A 120VAC 0.73mA, 250VAC 1.52mA
 Terminals 6.3mm push-ons EMC1
 Approvals UL, CSA, VDE

EMC Series Circuit Schematic



< 15

Stock No.	Manf Ref ¹	Current	Case size	Unit Price		
				1-9	10-24	25-49
5051143	3EMC1	3A		18.62	16.76	15.83
5051146	6EMC1	6A		18.62	16.76	15.83
5051149	10EMC1	10A		18.62	16.76	15.83
5051152	15EMC1	15A		27.06	24.35	23.00
5051031	20EMC1	20A		31.58	28.42	26.84