

**SRB Series
Compact Depth
IEC Panel Mount**



**Attenuation Graph for
SRB Series**

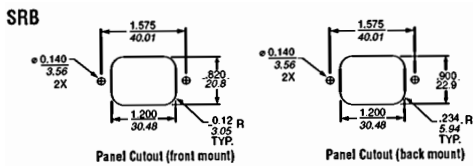
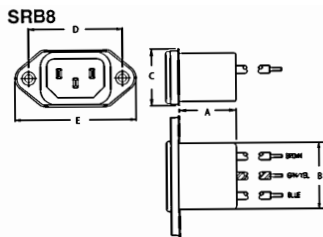
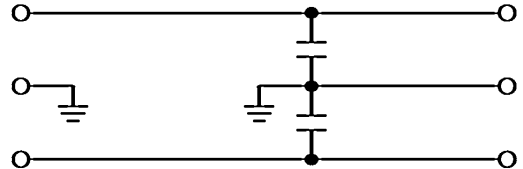
Minimum insertion loss in dB:
Line-to-ground in 50 ohm circuit

Capacitor	Frequency Mhz					
ID	1	5	10	50	100	300
Q	-	-	-	-	-	20
R	-	-	-	3	6	22
S	-	-	1	6	17	19
T	-	-	2	13	13	19
W	-	2	4	18	13	20
X	-	5	9	25	10	17
Y	1	10	15	20	8	22
Z	2	14	18	17	7	15

A single phase IEC power inlet filter consisting of a simple pair of Cy capacitors to ground but featuring a panel depth of only 23.8mm when specified with flying leads. Models are available unfiltered or with various capacitance values. All models are rated to 15A. Options include snap in, flange mount, pcb mount, flying leads.

Rated voltage 120/250 VAC
 Leakage current 2200pF 250VAC 0.28mA, 120VAC 0.16mA
 220pF 250VAC 33.2uA, 120VAC 19.2uA
 Terminals Wire leads SRB8, 6.3mm push-ons SRBS1
 Approvals UL, CSA, VDE to 10A
 Dimensions D = 23.8, H = 24.38, W = 40.0

SRB Series Circuit Schematic

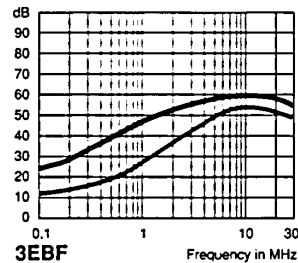


Stock No.	Manf Ref ¹	Current	Case style	Unit Price		
				1-9	10-24	25-49
5051098	15SRB8	15A No Cap	Flange Mt Lds	1.78	1.60	1.51
5051101	15SRB8-S	15A 220pF	Flange Mt Lds	1.92	1.73	1.63
5051104	15SRB8-W	15A 470pF	Flange Mt Lds	1.98	1.78	1.68
5051107	15SRB8-Y	15A 2200pF	Flange Mt Lds	1.98	1.78	1.68
5051110	15SRBS1	15A No Cap	Snap-in 6.3mm	1.98	1.78	1.68
5051113	15SRBS1-S	15A 220pF	Snap-in 6.3mm	1.78	1.60	1.51
5051116	15SRBS1-W	15A 470pF	Snap-in 6.3mm	1.78	1.60	1.51
5051119	15SRBS1-Y	15A 2200pF	Snap-in 6.3mm	1.78	1.60	1.51

**EBF Series
IEC Assesory Outlet Filter**



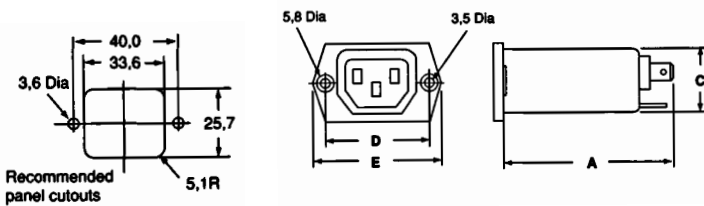
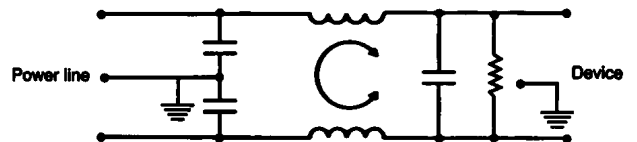
**Attenuation Graph for
EBF Series**



The EBF accessory outlet filter provides a means of connecting accessories whilst filtering noise between a system and those devices attached.

Rated voltage 120/250 VAC
 Leakage current 120 VAC 0.25mA, 250 VAC 0.50mA
 Terminals 6.3mm push-ons EBF1
 Approvals UL, CSA, VDE
 Dimensions D = 65.3, H = 25.4, W = 50.5

EBF Series Circuit Schematic



Stock No.	Manf Ref ¹	Current	Case style	Unit Price		
				1-9	10-24	25-49
5051122	6EBF1	6A	Flange Mt	10.65	9.59	9.05
5051125	10EBF1	10A	Flange Mt	10.65	9.59	9.05