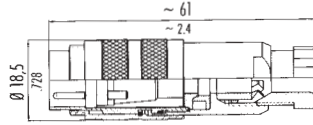
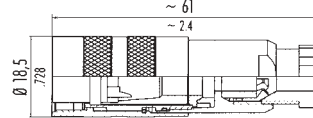


Miniature Connectors IP67 EMC Shielding, 423 Series



Cable Male Plug



A range of lightweight, 18mm metal body connectors with screw coupling. All feature solder bucket terminations and cable clamp strain relief for Ø4-6mm cable. Excellent EMC shielding with 360° shielding ring.

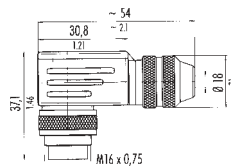
Contacts	2	3	4	5	5(st)	8
Current rating	7A	7A	6A	6A	6A	5A
Voltage rating	250	250	250	250	60	60
Contact res. (m ohm)	< 5	< 5	< 5	< 5	< 5	< 5
IP Rating	IP67 when mated					
Temperature	-30°C to +95°C					
Wire size mm ²	0.75	0.75	0.75	0.75	0.75	0.75
Termination	Solder bucket					
Cable outlet	4 - 6mm ²					
Housing	Nickel plated brass					
Cable inserts	Polyamide PA66 - UL94V0					

Note: All panel receptacles are mounted from the front with locking ring at the back. Versions suitable for pre-assembled wiring looms (i.e. mounted from the back with locking ring at the front), are also available.

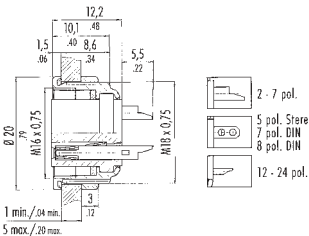
Panel Plugs/Sockets IP67 EMC Shielding, 723/423 Series



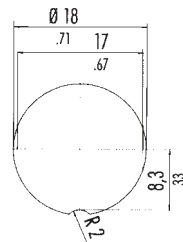
Cable Female Socket



Right Angle Male Plug



Panel Female Receptacle



Panel Cut-out

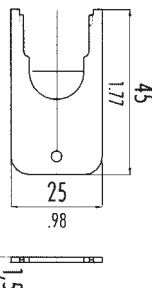
Stock No.	Manf Ref ¹	Type	Ways	Unit Price		
				1-9	10-24	25-99
Straight Cable Plugs						
4611001	99-5101-15-02	MALE	2	6.54	6.02	5.49
4611004	99-5105-15-03	MALE	3	6.65	6.12	5.59
4611007	99-5109-15-04	MALE	4	6.74	6.20	5.66
4611010	99-5113-15-05	MALE	5	6.93	6.38	5.82
4611013	99-5171-15-08	MALE	8	7.69	7.07	6.46
4611016	99-5129-15-12	MALE	12	8.81	8.11	7.40
4611019	08-1077-00-00	PROTECTION CAP		2.03	1.87	1.71
Straight Cable Sockets						
4611022	99-5102-15-02	FEMALE	2	6.78	6.24	5.70
4611025	99-5106-15-03	FEMALE	3	6.89	6.34	5.79
4611028	99-5110-15-04	FEMALE	4	6.98	6.42	5.86
4611031	99-5114-15-05	FEMALE	5	7.18	6.61	6.03
4611034	99-5172-15-08	FEMALE	8	3.96	3.64	3.33
4611037	99-5130-15-12	FEMALE	12	4.56	4.20	3.83
4611040	08-1078-00-00	PROTECTION CAP		0.97	0.89	0.81
Right Angle Cable Plugs						
4611043	99-5105-75-03	MALE	3	6.70	6.16	5.63
4611046	99-5113-75-05	MALE	5	6.96	6.40	5.85
Right Angle Cable Sockets						
4611049	99-5106-75-03	FEMALE	3	7.14	6.57	6.00
4611052	99-5114-75-05	FEMALE	5	7.46	6.86	6.27
Panel Male Plugs						
4611055	09-0103-00-02	MALE	2	3.53	3.25	2.97
4611058	09-0107-00-03	MALE	3	3.47	3.19	2.91
4611061	09-0111-00-04	MALE	4	3.71	3.41	3.12
4611064	09-0115-00-05	MALE	5	3.71	3.41	3.12
4611067	09-0173-00-08	MALE	8	4.54	4.18	3.81
4611070	09-0131-00-12	MALE	12	6.87	6.32	5.77
4611073	08-1079-00-00	PROTECTION CAP		1.86	1.71	1.56
Panel Female Sockets						
4611076	09-0104-00-02	FEMALE	2	3.70	3.40	3.11
4611079	09-0108-00-03	FEMALE	3	3.83	3.52	3.22
4611082	09-0112-00-04	FEMALE	4	3.95	3.63	3.32
4611085	09-0116-00-05	FEMALE	5	4.01	3.69	3.37
4611088	09-0174-00-08	FEMALE	8	4.97	4.57	4.17
4611091	09-0132-00-12	FEMALE	12	7.61	7.00	6.39
4611094	08-1080-00-00	PROTECTION CAP		1.61	1.48	1.35

Protective Caps



A spanner used to tighten locking rings that secure plugs and sockets to panels.

Panel Plug and Socket Spanner



Stock No.	Manf Ref ¹	Type	Unit Price		
			1-9	10-24	25-99
4611418	07-0010-001	SPANNER	4.36	4.01	3.66