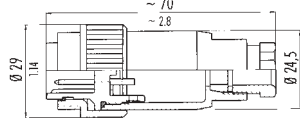
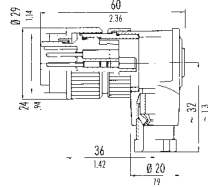


## Circular Connectors IP67 692 Series

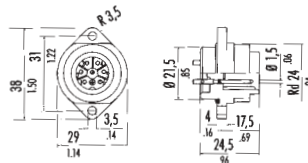


Straight Cable Male Plug

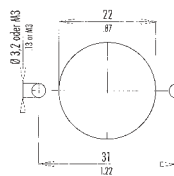


Right Angle Cable Male Plug

## Panel Plugs/Sockets IP67 692 Series



Panel Male Receptacle (6 way + Earth)



Panel Cut-out

A range of robust plastic waterproof connectors with screw coupling that are ideal for harsh environments. All feature a pre-mating earth contact and are available in 4 way (3 + earth, screw terminals) or 7 way (6 + earth, solder terminals). Straight or right angle options for cable plugs or sockets, all with cable strain relief.

Contacts	3 + Earth	6 + Earth
Termination	Screw	Solder bucket
Wire size mm <sup>2</sup>	0.5 - 2.5	0.34 - 1.5
Current rating	16A	10A
Voltage rating	400V	250V
Contact resistance	≤ 5m ohm	
IP Rating	IP67 when mated	
Temperature	-40°C to +100°C	
Housing	PBT - UL94V0	

**Note:** VDE, UL, SEV approved connector plugs and sockets (693 series) are also available in the same models and styles, please enquire.

Stock No.	Manf Ref'	Type	Ways	Unit Price		
				1-9	10-24	25-99
<b>Straight Cable Plugs/Sockets</b>						
4611097	99-0209-00-04	MALE	3+E	4.19	3.85	3.52
4611100	99-0213-00-07	MALE	6+E	3.78	3.48	3.18
4611103	99-0210-00-04	FEMALE	3+E	4.29	3.95	3.60
4611106	99-0214-00-07	FEMALE	6+E	3.81	3.51	3.20
<b>Right Angle Cable Plugs/Sockets</b>						
4611109	99-0209-70-04	MALE	3+E	5.26	4.84	4.42
4611112	99-0213-70-07	MALE	6+E	5.05	4.65	4.24
4611115	99-0210-70-04	FEMALE	3+E	5.90	5.43	4.96
4611118	99-0214-70-07	FEMALE	6+E	5.00	4.60	4.20
<b>Panel Plugs/Sockets</b>						
4611121	09-0211-00-04	MALE	3+E	2.71	2.49	2.28
4611124	09-0215-00-07	MALE	6+E	2.71	2.49	2.28
4611127	09-0212-00-04	FEMALE	3+E	3.40	3.13	2.86
4611130	09-0216-00-07	FEMALE	6+E	2.53	2.33	2.13
<b>Protection Caps for Cables &amp; Panels</b>						
4611133	08-2299-00-00	CABLE/MAL		1.60	1.47	1.34
4611136	08-2300-00-00	CABLE/FEMALE		1.60	1.47	1.34
4611139	08-2301-00-00	PANEL/MALE		1.60	1.47	1.34
4611142	08-2302-00-00	PANEL/FEMALE		1.60	1.47	1.34
<b>Accessories for Bulkhead Mounting</b>						
4611145	16-0566-00-00	HOUSING		11.94	10.98	10.03
4611148	04-0722-00-00	GASKET		0.25	0.23	0.21

