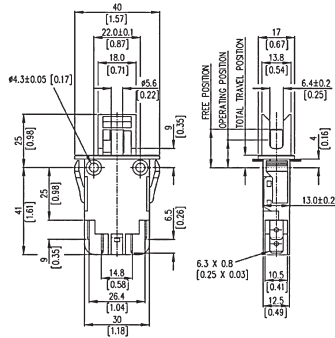


Door Interlock Security Switch

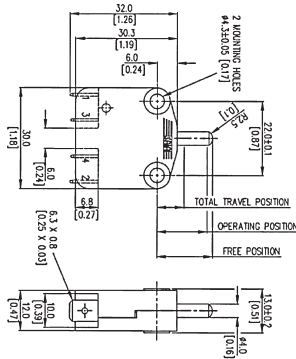
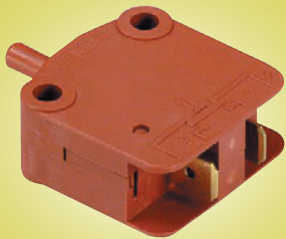


A double pole safety interlock switch for isolating equipment during maintenance. Manufactured to prevent restoration of power without use of override key which allows powered and unpowered maintenance. A terminal shroud is also available to provide additional safety.

Electrical rating	16.5A at 380V ac (max)
Contacts / Material	Double pole N/O, 2 x 4mm gap / Silver nickel
Terminals	6.3mm push-on
Mechanical life	10 ⁶
Temperature	-20° C to +85° C
Housing / Lever	Glass fibre reinforced polyester
Operating force.N	3.8 ±0.5
Total travel force.N	5.8 ±1.0
Operating travel.mm	5
Overtravel.min.mm	3
Approvals	UL, CSA, ENEC, BEAB

Stock No.	Manf Re'	Type	Unit Price		
			1-9	10-49	50-99
2193316	XTD22	SWITCH	3.01	2.89	2.62
2192191	N41784	OVERRIDE KEY	0.69	0.65	0.61
2193325	XTMHSG	SHROUD	0.85	0.82	0.74

Door Interlock Security Switches, Plain Plunger

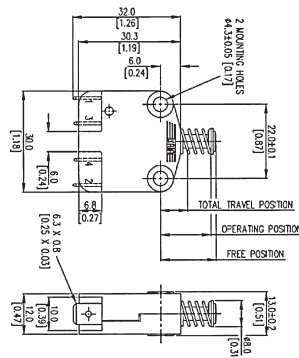


A single pole door switch with a plain plunger actuator for use in domestic appliances, copying and vending machines etc. Available with changeover, N/C or N/O contacts. Simplified fitting due to long overtravel.

Electrical rating	16A at 250V ac (max)		
Contacts / Material	Single pole, 2 x 3mm gap / Silver		
Terminals	6.3mm push-on		
Mechanical life	10 ⁷		
Temperature	-20° C to +85° C		
Housing / Lever	Glass fibre reinforced polyester		
	C/O	N/C	N/O
Operating force.N	3	1.75	3
Total travel force.N	5.5	5.5	5.5
Operating travel.mm	0.4	0.4	3.6
Overtravel.min.mm	4.5	6.5	4.5
Approvals	UL, CSA, ENEC		

Stock No.	Manf Re'	Type	Unit Price		
			1-9	10-79	80+
2193283	XP2-Z11	C/O	2.65	2.39	2.03
2193292	XP42-Z11	N/C	Consult for Price		
2193301	XP52-Z11	N/O	Consult for Price		

Door Interlock Security Switch, Mushroom Plunger

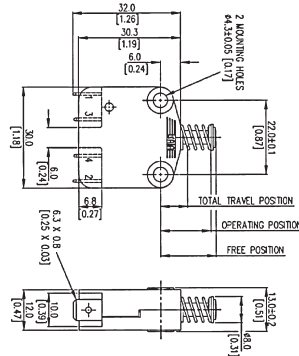


A single pole door switch with a mushroom plunger actuator for use in domestic appliances, copying and vending machines etc. Available with changeover contacts. Simplified fitting due to long overtravel.

Electrical rating	16A at 250V ac (max)
Contacts / Material	Single pole C/O, 2 x 3mm gap / Silver
Terminals	6.3mm push-on
Mechanical life	10 ⁷
Temperature	-20° C to +85° C
Housing / Lever	Glass fibre reinforced polyester
Operating force.N	3
Total travel force.N	5.5
Operating travel.mm	0.4
Overtravel.min.mm	4
Approvals	UL, CSA, ENEC

Stock No.	Manf Re'	Type	Unit Price		
			1-9	10-49	50-99
2193289	XP2E2-Z11	C/O	Consult for Price		

Door Interlock Security Switches, Spring Reset



A single pole door switch with a mushroom plunger and reset spring actuator for use in domestic appliances, copying, vending and amusement machines etc. Available with changeover, N/C or N/O contacts. Simplified fitting due to long overtravel.

Electrical rating	16A at 250V ac (max)		
Contacts / Material	Single pole, 2 x 3mm gap / Silver		
Terminals	6.3mm push-on		
Mechanical life	10 ⁷		
Temperature	-20° C to +85° C		
Housing / Lever	Glass fibre reinforced polyester		
	C/O	N/C	N/O
Operating force.N	6.5	3.75	6.5
Total travel force.N		9	9
Operating travel.mm	0.4	0.4	3.6
Overtravel.min.mm	2.1	4	2.1
Approvals	UL, CSA, ENEC		

Stock No.	Manf Re'	Type	Unit Price		
			1-9	10-49	50-99
2193286	XP2E1-Z11	C/O	Consult for Price		
2193295	XP42E1-Z11	N/C	Consult for Price		
2193304	XP52E1-Z11	N/O	Consult for Price		

< 26