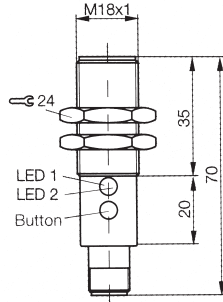


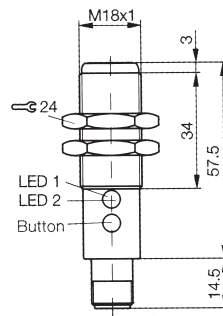
M18, 400mm Diffuse DC, Teach-in



Two M18 industry standard metal bodied DC sensors, featuring teach-in sensitivity adjustment, in the diffuse & reflex models. Teach-in allows the sensor to be calibrated by a single press of a button, reducing installation time, compared to models with potentiometer adjustment. Both sensors have a PNP output which may be programmed to N/O or N/C and the free line can serve as a contamination output line which may be used to indicate when the lens needs cleaning. The reflex model has a Polarising filter for reliable detection of clear & shiny objects and red light output for ease of alignment/set-up. Protected to IP67 for harsh conditions & aggressive cleaning.

| | |
|------------------------|---|
| Thread size | M18 |
| Nominal sensing range | 400mm Diffuse, 2m Reflex |
| Supply voltage | 10-30 volt DC |
| Rated output current | 200 mA |
| Temperature | -15 to + 55 °C |
| Frequency | 500 Hz |
| Sensitivity adjustment | Teach-in |
| Built in LED's | Yes (yellow/function, green/contamination) |
| IP Rating | IP67 |
| Body material | Nickel plated brass |
| Connection type (both) | M12 connector, 4 wire type (brown/+ve, black/NO or NC output white/NO contamination output, blue/-ve) |

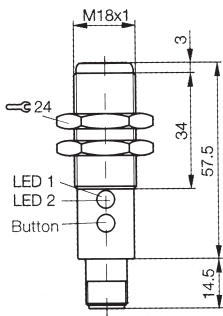
M18, 2m Reflex, DC Teach-in, Polarised



Reflex sensors must be used with suitable reflectors. NPN versions can be supplied upon request. Mounting clamps, please order separately, see below.

| Stock No. | Manf Ref' | Type | Unit Price 1-4 |
|----------------|----------------|-----------|----------------|
| DIFFUSE | | | |
| 2668373 | BOS18MPU1PDS4C | PNP NO/NC | 54.06 |
| REFLEX | | | |
| 2668376 | BOS18MPU1QBS4C | PNP NO/NC | 63.66 |

M18, 16m Through Beam, DC, Teach-in

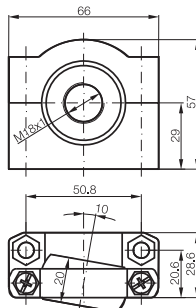
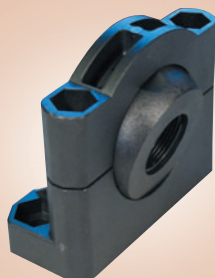


A through beam industry standard DC sensor in a M18 body featuring teach-in sensitivity adjustment for faster set-up, by one push of a button.

| | |
|--------------------------|---|
| Thread size | M18 |
| Nominal sensing range | 16m |
| Supply voltage | 10-30 volt DC |
| Rated output current | 200 mA |
| Temperature | -15 to + 55 °C |
| Frequency | 500 Hz |
| Sensitivity adjustment | Teach-in |
| Built in LED | Yes (yellow/function, green/status-emitter) |
| Body material | Nickel plated brass |
| Connection type receiver | M12 connector, 4 wire type (brown/+ve, black/NO or NC output white/NO contamination output, blue/-ve) |
| Connection type emitter | M12 connector, 4 wire type (brown/+ve, black/test output, blue/-ve) |
| IP Rating | IP67 |

| Stock No. | Manf Ref' | Type | Unit Price 1-4 |
|-----------|---------------|-----------|----------------|
| 2668636 | BLE18MPU1PS4C | PNP NO/NC | 71.27 |
| 2668639 | BLS18MXX1PS4L | EMITTER | 71.27 |

Mounting Clamp



A mounting clamp with ball joint used for holding tubular products having an external thread. It permits axial adjustment by 360° and an inclination of 10°. The ball joint joint is clamped using 2 screws having a Phillips/straight combination head and self locking nuts.

| | |
|----------|----------------------------------|
| Material | Plastic, fibreglass reinforced |
| Fixings | Stainless steel, screws and nuts |

| Stock No. | Manf Ref' | Type | Unit Price 1-4 |
|-----------|-----------|----------------|----------------|
| 2668627 | BOS180KB1 | MOUNTING CLAMP | 14.15 |

<< 22