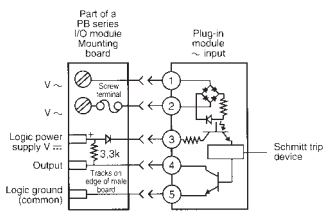


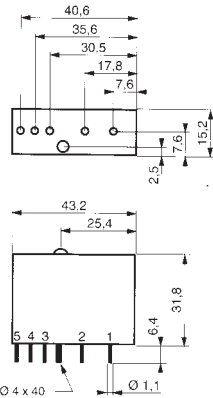
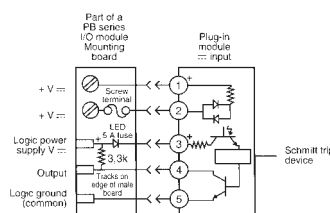
**Input Module
Standard Range 15.24mm**



Input Module Connections VAC



Input Module Connections VDC



A standard range (15.24mm) of single channel input modules with inputs of 120VAC, 240VAC, 5-28VDC and outputs of 5VDC or 24VDC. Designed to determine the status of an AC or DC load by producing a low-voltage logic output signal. Housed in a standard industrial casing with captive screw for retention.

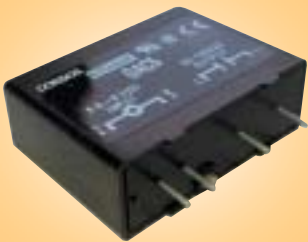
Input characteristics	120VAC	240VAC	5-28VDC
Nominal voltage	120Vac	240Vac	5-28Vdc
Operating voltage range	90-140	180-280	3.3-32
Input resistance ohm	28K	75K	1K
Input current max.	5mA	5mA	34mA
Current drop	2mA	1.5mA	1mA
Guaranteed turn-off	50Vac	50Vac	2Vdc

Output characteristics	5VDC	24VDC
Logic voltage	5Vdc	24Vdc
Logic voltage range	3-6Vdc	20-30Vdc
Logic current max.	16mA	16mA
Transistor voltage max.	30Vdc	30Vdc
Transistor current max.	50mA	50mA
Leakage current max.	10µA	10µA
Residual voltage	0.2Vdc	0.2Vdc

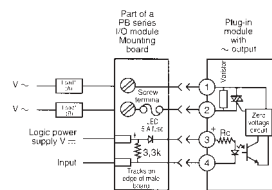
General characteristics
 Temperature -30°C to +80°C
 Response time turn-on 20ms (Vac input), 1ms (Vdc input)
 Response time turn-off 30ms (Vac input), 1ms (Vdc input)
 I/O isolation 4kV
 Approvals UL (E46203), CSA certified (38595)

Stock No.	Manf Ref'	Type	Input	Output	Colour	Unit Price		
						1-4	5-9	10-24
3261389	84 110 110	IAC5	120VAC	5VDC	YELLOW	9.20	8.74	8.28
3261392	84 110 111	IAC5A	240VAC	5VDC	YELLOW	9.20	8.74	8.28
3261404	84 110 210	IDC5	5-28VDC	5VDC	WHITE	10.08	9.58	9.07
3261398	84 110 130	IAC24	120VAC	24VDC	YELLOW	9.20	8.74	8.28
3261401	84 110 131	IAC24A	240VAC	24VDC	YELLOW	9.20	8.74	8.28
3261407	84 110 230	IDC24	5-28VDC	24VDC	WHITE	10.02	9.52	9.02

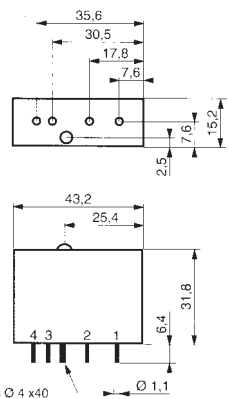
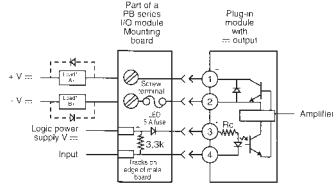
**Output Module
Standard Range 15.24mm**



Output Module Connections VAC



Output Module Connections VDC



A standard range (15.24mm) of single channel output modules with outputs of 120VAC, 240VAC, 5-48VDC and inputs of 5VDC or 24VDC. Designed to control AC or DC loads using low voltage logic input signals. They can control loads of up to 3 Amps and can be used over a wide voltage range from 5 to 48 VDC and from 120 to 240VAC. Housed in a standard industrial casing with captive screw for retention.

Input characteristics	5VDC	24VDC
Nominal voltage	5Vdc	24Vdc
Control voltage range	2.75-8Vdc	18-32Vdc
Voltage drop	1Vdc	1Vdc
Input resistance ohm	220*	2000
Input current max.mA	20*	13

Output characteristics	120VAC	240VAC	5-48VDC
Operating voltage range	12-140Vac	24-280Vac	3-60Vdc
Leakage current max.	3mA	6mA	10µA
Static dv / dt - off-state	200V/µs	200V/µs	200V/µs
Output current	3.5mA	3.5mA	3A
Holding current	50mA	50mA	10mA

AC output models switch on zero voltage, Instantaneous types available

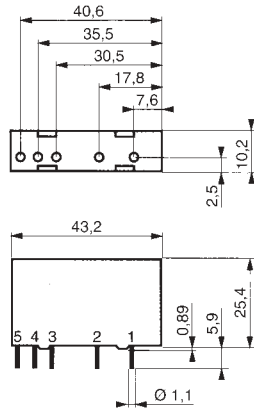
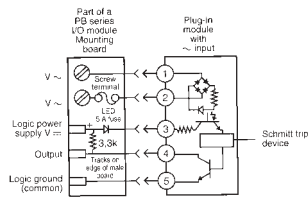
General characteristics
 Temperature -30°C to +80°C
 Response time turn-on 8.33ms (Vac input), 0.1ms (Vdc input)
 Response time turn-off 8.33ms (Vac input), 0.75ms (Vdc input)
 I/O isolation 4kV
 Approvals UL (E46203), CSA certified (38595)

Stock No.	Manf Ref'	Type	Input	Output	Colour	Unit Price		
						1-4	5-9	10-24
3261410	84 110 310	OAC5	5VDC	120VAC	BLACK	10.06	9.56	9.05
3261413	84 110 311	OAC5A	5VDC	240VAC	BLACK	10.06	9.56	9.05
3261422	84 110 410	ODC5	5VDC	5-48VDC	RED	9.57	9.09	8.61
3261416	84 110 330	OAC24	24VDC	120VAC	BLACK	10.06	9.56	9.05
3261419	84 110 331	OAC24A	24VDC	240VAC	BLACK	10.06	9.56	9.05
3261425	84 110 430	ODC24	24VDC	5-48VDC	RED	9.57	9.09	8.61

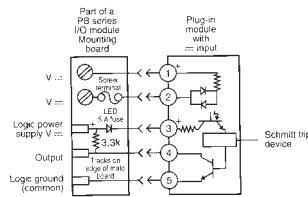
Input Module Slimline Range 10.2mm



Input Module Connections VAC



Input Module Connections VDC



A slimline range (10.2mm) of single channel input modules with inputs of 120VAC, 240VAC, 5-28VDC, 12-48Vdc and outputs of 5VDC or 24VDC. Designed to determine the status of an AC or DC load by producing a low-voltage logic output signal. Industry standard footprint.

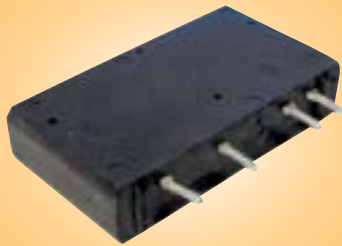
Input characteristics	120VAC	240VAC	5-28VDC	12-48VDC
Nominal voltage	120Vac	240Vac	5-28Vdc	12-48Vdc
Operating voltage range	90-140	180-280	3.3-32	10-48
Input resistance max.	28Kohm	75Kohm	1Kohm	2Kohm
Input current max.	5mA	5mA	34mA	34mA
Current drop	2mA	1.5mA	1mA	1mA
Guaranteed turn-off	50Vac	150Vac	2Vdc	4Vdc

Output characteristics	5VDC	24VDC
Logic voltage	5Vdc	24Vdc
Logic voltage range	3-6Vdc	20-30Vdc
Logic current max.	16mA	16mA
Transistor voltage max.	30Vdc	30Vdc
Transistor current max.	50mA	50mA
Leakage current max.	10µA	10µA
Residual voltage	0.2Vdc	0.2Vdc

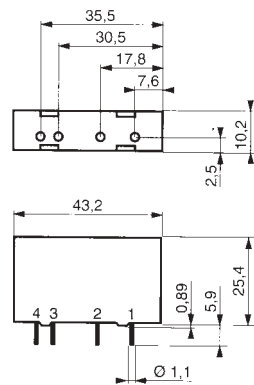
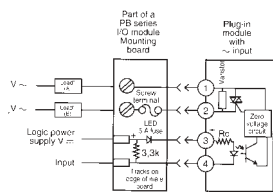
General characteristics
 Temperature -30°C to +80°C
 Response time turn-on 20ms (Vac input), 1ms (MIDC5) 5MS (MIDC5N)
 Response time turn-off 30ms (Vac input), 1ms (MIDC5) 5ms (MIDC5N)
 I/O isolation 4kV
 Approvals UL (E46203), CSA certified (38595)

Stock No.	Manf Ref'	Type	Input	Output	Colour	Unit Price		
						1-4	5-9	10-24
3261431	84 111 110	MIAC5	120VAC	5VDC	YELLOW	8.75	8.31	7.88
3261434	84 111 111	MIAC5A	240VAC	5VDC	YELLOW	8.75	8.31	7.88
3261446	84 111 210	MIDC5	5-28VDC	5VDC	WHITE	8.75	8.31	7.88
3261449	84 111 212	MIDC5N	12-48VDC	5VDC	WHITE	8.77	8.33	7.89
3261440	84 111 130	MIAC24	120VAC	24VDC	YELLOW	8.75	8.31	7.88
3261443	84 111 131	MIAC24A	240VAC	24VDC	YELLOW	8.75	8.31	7.88

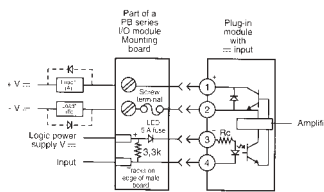
Output Module Slimline Range 10.2mm



Output Module Connections VAC



Output Module Connections VDC



A slimline range (10.2mm) of single channel output modules with outputs of 120VAC, 240VAC, 5-28VDC and inputs of 5VDC or 24VDC. Designed to control AC or DC loads using low voltage logic input signals. They can control loads of up to 3 Amps and can be used over a wide voltage range from 5 to 48 VDC and from 120 to 240VAC. Housed in a standard industrial casing.

Input characteristics	5VDC	24VDC
Nominal voltage	5Vdc	24Vdc
Control voltage range	2.75-8Vdc	18-32Vdc
Voltage drop	1Vdc	1Vdc
Input resistance ohm	220*	2000
Input current max.mA	20*	13

Output characteristics	120VAC	240VAC	5-48VDC
Operating voltage range	12-140Vac	24-280Vac	3-60Vdc
Leakage current max.	3mA	6mA	10µA
Static dv / dt - off-state	200V/µs	200V/µs	200V/µs
Output current	3.5mA	3.5mA	3A
Holding current	50mA	50mA	10mA

AC output models switch on zero voltage, Instantaneous types available

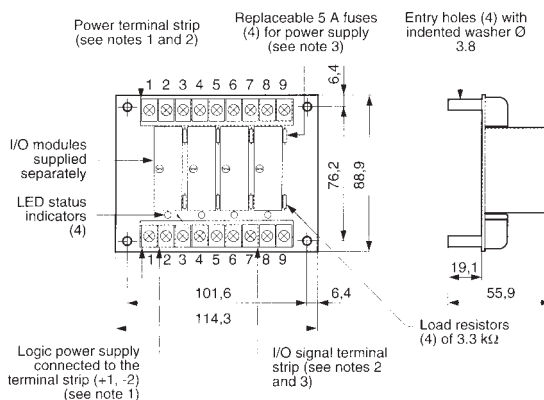
General characteristics
 Temperature -30°C to +80°C
 Response time turn-on 8.33ms (Vac input), 0.1ms (Vdc input)
 Response time turn-off 8.33ms (Vac input), 0.75ms (Vdc input)
 I/O isolation 4kV
 Approvals UL (E46203), CSA certified (38595)

Stock No.	Manf Ref'	Type	Input	Output	Colour	Unit Price		
						1-4	5-9	10-24
3261455	84 111 310	MOAC5	5VDC	120VAC	BLACK	9.68	9.20	8.71
3261458	84 111 311	MOAC5A	5VDC	240VAC	BLACK	9.68	9.20	8.71
3266241	84 111 410	MODC5	5VDC	5-48VDC	RED	9.17	8.71	8.25
3261464	84 111 330	MOAC24	24VDC	120VAC	BLACK	9.85	9.36	8.87
3261467	84 111 331	MOAC24A	24VDC	240VAC	BLACK	9.85	9.36	8.87
3261470	84 111 430	MODC24	24VDC	5-48VDC	RED	9.34	8.87	8.41

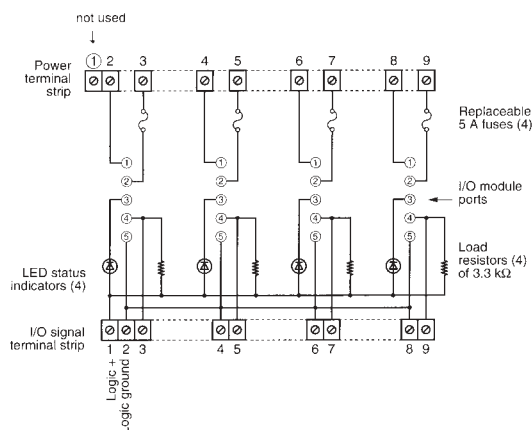
4 Way Mounting Board for Standard I/O Modules



Dimensions in mm.



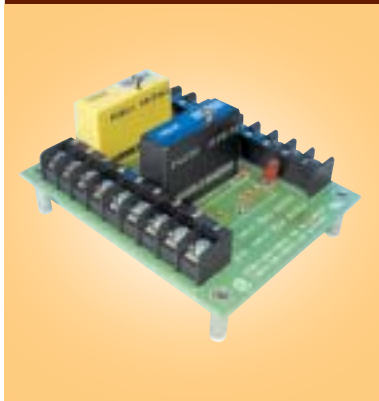
Connections



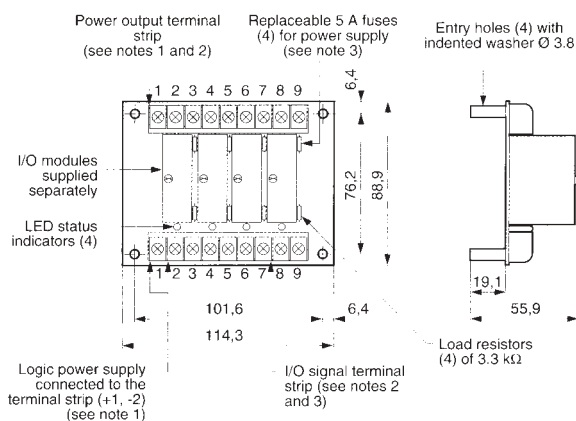
4 channel I/O module mounting board for conveniently grouping standard size I/O modules. Any type of module can be plugged into any position and are retained by single screw fixing. Each socket position has LED for logic status display. Screw terminals for power and I/O signal connections. Power input or output signals incorporate a 5A fuse for protection (spares are available).

Stock No.	Manf Ref ¹	Type	Unit Price		
			1-4	5-9	10-24
3261245	26 852 436	PB-4	31.39	29.82	28.25

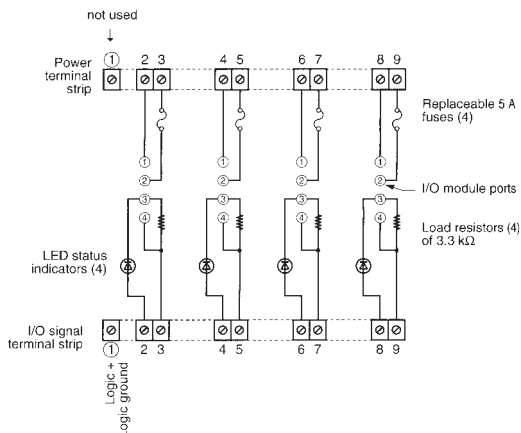
Multi Logic 4 Way Mounting Board for I/O Modules



Dimensions in mm.



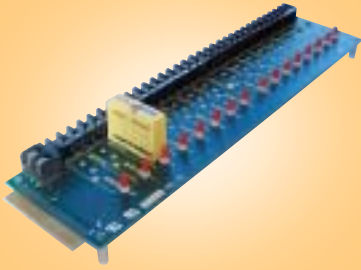
Connections



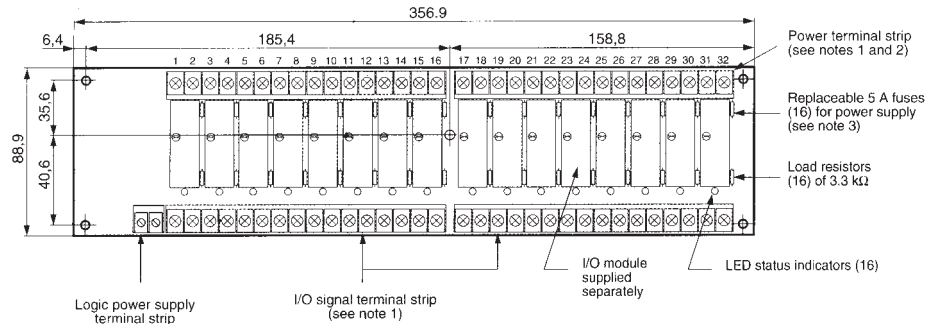
4 channel output module mounting board for conveniently grouping standard size output modules to give multi logic provision. Input modules cannot be plugged into the PB-4R board. Output modules are retained by single screw fixing. Each socket position has LED for logic status display. Screw terminals for power and output signal connections. Power output signals incorporate a 5A fuse for protection (spares are available).

Stock No.	Manf Ref ¹	Type	Unit Price		
			1-4	5-9	10-24
3261248	26 852 437	PB-4R	30.96	29.41	27.86

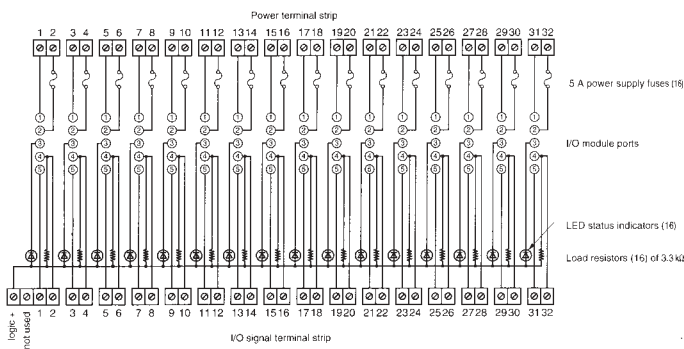
16 Way Mounting Board for Standard I/O Modules



Dimensions in mm.



Connections



16 channel I/O module mounting board for conveniently grouping standard size I/O modules. Any type of module can be plugged into any position and are retained by single screw fixing. Each socket position has LED for logic status display. The 16 channel board has screw terminals for power and is available with either screw terminals or male edge connector for I/O signal connections, a female interface connector is also available. Power input or output signals incorporate a 5A fuse for protection (spares are available).

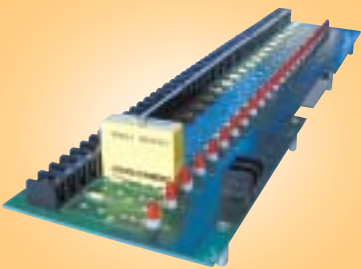
50 way edge connector type PB-16
Screw terminal type PB-16S

IDC type connections are also available

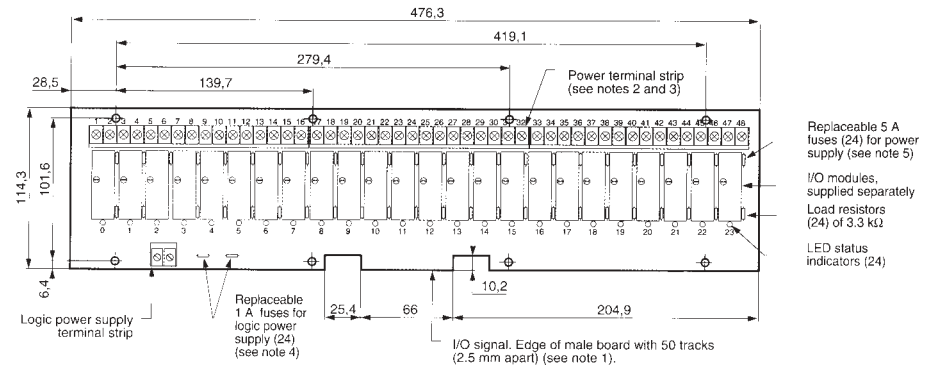
Technical diagrams show dimensions and connections for PB-16S

Stock No.	Manf Ref'	Type	Unit Price		
			1-4	5-9	10-24
3261236	26 852 443	PB-16	87.65	83.27	78.89
3261272	26 852 445	PB-16S	119.49	113.52	107.54

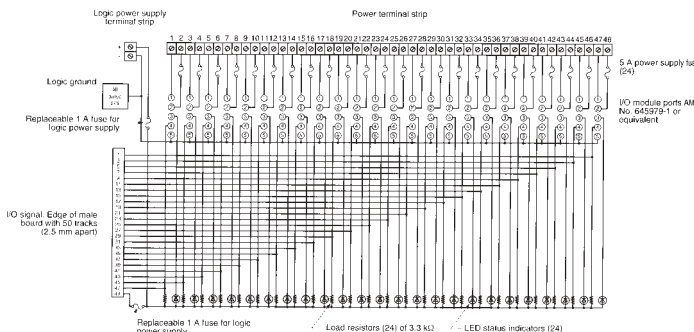
24 Way Mounting Board for Standard I/O Modules



Dimensions in mm.



Connections



24 channel I/O module mounting board for conveniently grouping standard size I/O modules. Any type of module can be plugged into any position and are retained by single screw fixing. Each socket position has LED for logic status display. Screw terminals for power and male edge connector for I/O signal connections. Power input or output signals incorporate a 5A fuse for protection (spares are available).

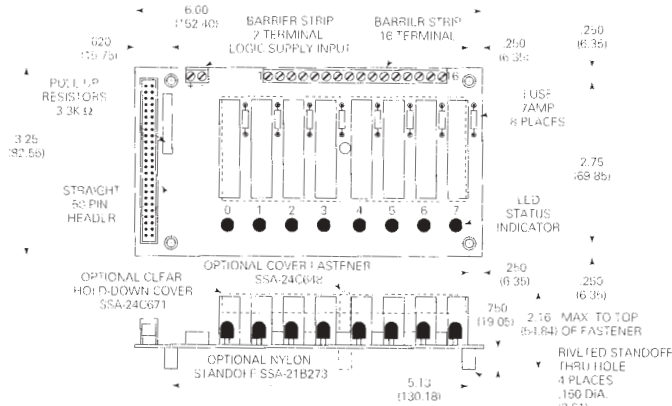
IDC type connections are also available

Stock No.	Manf Ref'	Type	Unit Price		
			1-4	5-9	10-24
3261293	26 852 453	PB-24	176.29	167.48	158.66

16 & 24 Way Mounting Boards for Slimline I/O Modules

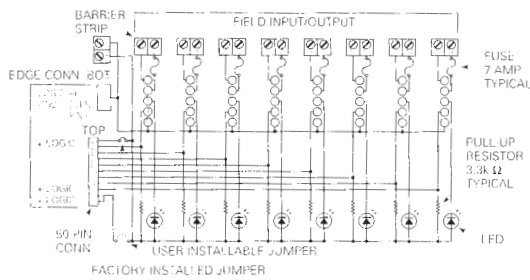


Outline Dimensions for 8 Way I/O Board



Connections

16 & 24 channel I/O module mounting boards for conveniently grouping slimline size I/O modules. Each socket position has LED for logic status display. Power input or output signals incorporate a 5A fuse for protection (spares are available).



Stock No.	Manf Ref'	Type	Unit Price		
			1-4	5-9	10-24
4951401	2IOM16	16 WAY MODULE	130.04	117.04	110.53
4951404	2IOM24	24 WAY MODULE	190.58	171.52	161.99

