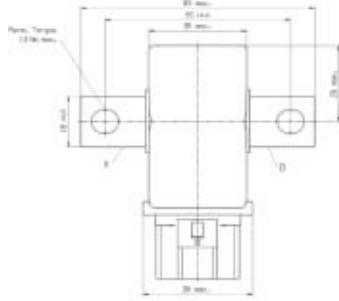


**Battery Disconnect Switch
190A 1 form X**

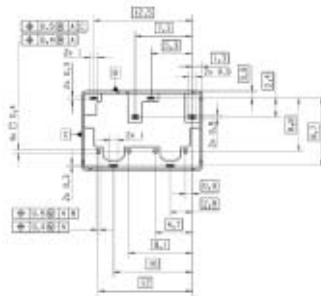


A magnetically latching power relay capable of carrying 190A at 85°C. A single short impulse to the set coil closes the relay contacts and a pulse to the reset coil opens the contacts. Designed primarily to break supply from vehicle battery in event of emergency. Typical applications are to disconnect starter motor from battery during accident, dual battery split charge applications, hydraulic pump control. IP67 sealed. Connection via amp 4 way sensor connector.

Contact arrangement	One from X, B to A load current direction
Contact material	Silver based
Continuous current	190A at 12V dc, polarity dependent wiring
Limiting current	1000A for 1s, 1500A for 0.2s
Operate / release time	15 ms min, 100 ms max pulse duration
Nominal coil power	Must operate current 1.3A at 25°C
Coil resistance.ohm	5 (12V coil)
Mechanical life	500,000
Dielectric strength	500V rms
Temperature	-40°C to +120°C
Approvals	
L = 60, W = 35, H = 35	

Stock No.	Manf Ref'	Type	Unit Price		
			1-24	25-99	100+
4954743	V23130-C2021-A4**	1 FORMX-12VDC	CONSULT		
4954745	V23130-C2021-A4**	1 FORMX-24VDC	CONSULT		

**Double Nano Relay
20A, 2 x SPCO**



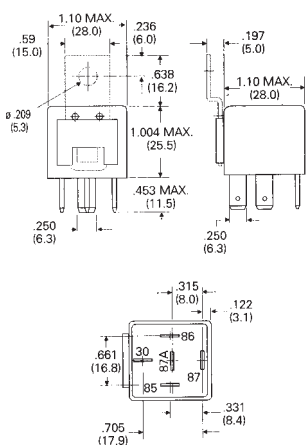
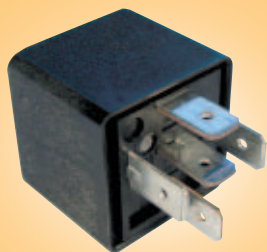
The double nano relay is a twin relay featuring 2 independant coils and 2 single pole changeover contacts in the same package. This is currently the smallest relay in its class able to switch 20A. Immersion cleanable.

Contact arrangement	2 x single pole changeover
Contact material	Silver based
Continuous current	20A N/O, 15A N/C twice
Contact load min	1A at 5V dc
Operate / release time	3 / 1.5 ms
Nominal coil power	0.72W individual
Coil resistance.ohm	200 (12V dc)
Mechanical life	5 million
Dielectric strength	500V rms
Temperature	-40°C to +125°C
Approvals	
L = 15.4, W = 14, H = 10.2	

Stock No.	Manf Ref'	Type	Unit Price		
			1-24	25-99	100+
TBA	V23138-C2001-A3032	X SPCO-12VDC	3.00	2.70	2.55



**VF4 Series, Plug-in Relay
40A, SPCO**

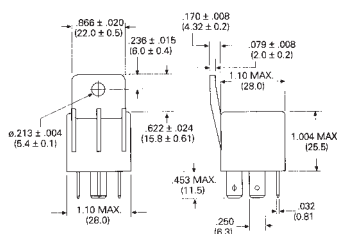
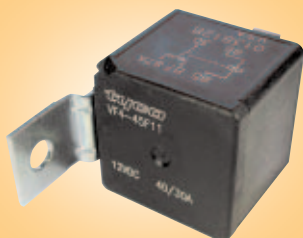


SPCO power relay for automotive applications featuring enhanced contacts for longer life. 6.3mm plug-in terminals. Robust and highly resistant to impact.

Contact arrangement Single pole changeover
 Contact material Silver nickel
 Continuous current max. 40A (N/C), 60A (N/O)
 Inrush current max. 45A (N/C), 120A (N/O)
 Brake current max. 40A (N/C), 60A (N/O) at 12Vdc
 Derate by approx 50% for 24V dc
 Nominal coil power 1.6 W at 23°C ambient
 Coil resistance, ohm. 90 (12V), 360 (24V)
 Allowable overdrive 20.2V dc (12V), 40.5V dc (24V) at 23°C
 Temperature -40°C to + 125°C
 Mechanical switching life 10⁷
 L = 28, W = 28, H = 25.5

Stock No.	Manf Ref'	Type	Unit Price		
			1-24	25-99	100+
4952475	VF415F11	SPCO-12VDC	3.96	3.56	3.37
4952481	VF415H11	SPCO-24VDC	3.40	3.06	2.89

**VF4 Series, Bracket Mount
40A, SPCO**

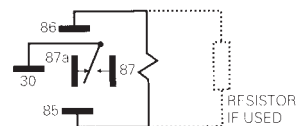


Bracket mounted SPCO power relay for automotive applications featuring enhanced contacts for longer life. Also available is a 12VDC version with suppression resistor (VF445F11S01). 6.3mm plug-in terminals on all relays. Highly resistant to impact.

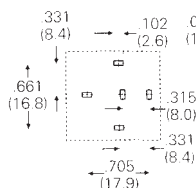
Contact arrangement Single pole changeover
 Contact material Silver nickel
 Continuous current max. 40A (N/C), 60A (N/O)
 Inrush current max. 45A (N/C), 120A (N/O)
 Brake current max. 40A (N/C), 60A (N/O) at 12V dc
 Derate by approx 50% for 24V dc
 Nominal coil power 1.6 W at 23°C ambient
 1.81 W with 680 ohm suppression resistor
 Coil resistance, ohm. 90 (12V), 360 (24V)
 Allowable overdrive 20.2V dc (12V), 40.5V dc (24V) at 23°C
 Temperature -40°C to + 125°C
 Mechanical switching life 10⁷

Stock No.	Manf Ref'	Type	Unit Price		
			1-24	25-99	100+
4952487	VF445F11	SPCO-12VDC	4.07	3.66	3.46
4952490	VF445F11S01	SPCO-12VDC	4.25	3.83	3.61
4952493	VF445H11	SPCO-24VDC	4.07	3.66	3.46

**VF4 Series, PCB Relay
40A, SPCO**



Terminal Arrangements (bottom view)



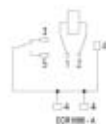
Board Layout

PCB mounted SPCO power relay for automotive applications featuring enhanced contacts for longer life. 2.3mm PCB terminals.

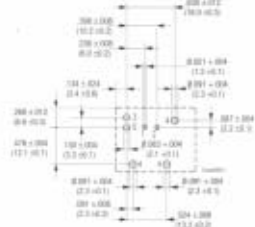
Contact arrangement Single pole changeover
 Contact material Silver nickel
 Continuous current max. 40A at 12V dc (N/C), 60A at 12 V dc(N/O)
 Inrush current max. 45A (N/C), 120A (N/O)
 Brake current max. 40A (N/C), 60A (N/O) at 12V dc
 Derate by approx 50% for 24V dc
 Nominal coil power 1.6 W at 23°C ambient
 Coil resistance, ohm. 90
 Allowable overdrive 20.2V dc at 23°C
 Temperature -40°C to + 125°C
 Mechanical switching life 10⁷
 L = 28, W = 28, H = 25.5

Stock No.	Manf Ref'	Type	Unit Price		
			1-24	25-99	100+
4952484	VF415H13	SPCO-12VDC	3.40	3.06	2.89

**Sealed Power K
30A, SPCO**



Terminal Arrangements (bottom view)



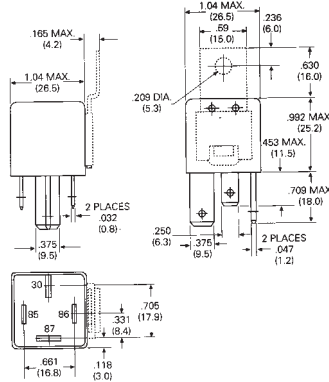
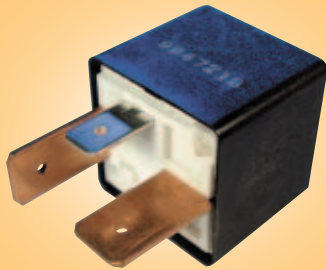
Board Layout

A high current automotive single pole changeover relay in a fully immersion sealed package. Also available with Silver tin contacts for high inrush loads. Other options are single n/o contact rated to 45A and open frame construction.

Contact arrangement Single pole changeover
 Contact material Silver nickel, silver tin available
 Continuous current 30A, N/O 25A N/C
 Contact load min 1A AT 5V dc
 Operate / release time 5 ms / 3 ms
 Nominal coil power 1.6W
 Coil resistance.ohm 90 (12V dc), 362 (24V dc)
 Mechanical life 10 Million
 Dielectric strength 500V rms
 Temperature -40°C to + 85°C
 L = 26.1, W = 21.1, H = 21.2

Stock No.	Manf Ref'	Type	Unit Price		
			1-24	25-99	100+
4954640	V23076-A1001-C133	SPCO-12VDC	2.20	1.98	1.87
4954642	V23076-A1022-C133	SPCO-24VDC	2.20	1.98	1.87

**VF7 Series, Plug-in Relay
70A, SP N/O**

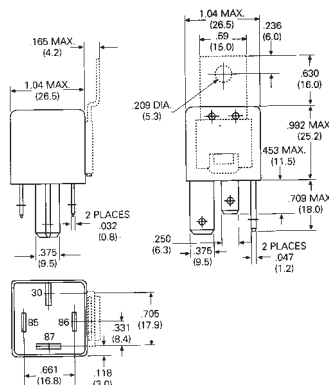
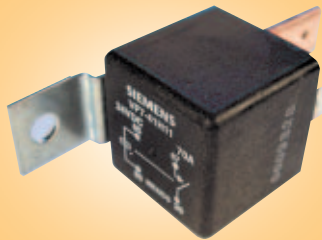


SPNO high power relay for automotive applications featuring enhanced contacts for longer life. 6.3mm plug-in terminals. Highly resistant to impact.

Contact arrangement	Single pole normally open
Contact material	Silver nickel
Continuous current max.	70A
Inrush current max.	120A
Brake current max.	70A (12V), derate by approx 50% for 24V dc
Nominal coil power	2.0 W at 23°C ambient
Coil resistance, ohm.	72 (12V), 288 (24V)
Allowable overdrive	18.1V dc (12V), 36.2V dc (24V) at 23°C
Temperature	-40°C to + 125°C
Mechanical switching life	10 ⁷
L = 26.5, W = 26.5, H = 25.2	

Stock No.	Manf Ref'	Type	Unit Price		
			1-24	25-99	100+
4952811	VF711F11	SPNO-12VDC	5.25	4.73	4.46
4952496	VF711H11	SPNO-24VDC	5.25	4.73	4.46

**VF7 Series, Bracket Mount
70A, SP N/O**

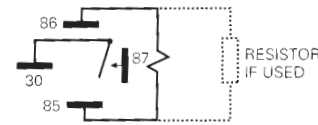
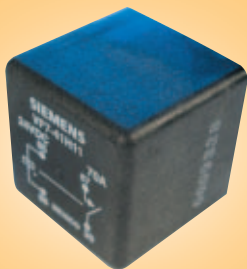


Bracket mounted SPNO high power relay for automotive applications featuring enhanced contacts for longer life. The 12VDC version (VF741F11S01) is fitted with suppression resistor. Both relays have 6.3mm plug-in terminals. Highly resistant to impact.

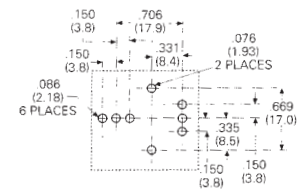
Contact arrangement	Single pole normally open
Contact material	Silver nickel
Continuous current max.	70A
Inrush current max.	120A
Brake current max.	70A (12V), derate by approx 50% for 24V dc
Nominal coil power	2.0 W at 23°C ambient
Coil resistance, ohm.	2.21 W with 680 ohm suppression resistor
Coil resistance, ohm.	72 (12V), 288 (24V)
Allowable overdrive	18.1V dc (12V), 36.2V dc (24V) at 23°C
Temperature	-40°C to + 125°C
Mechanical switching life	10 ⁷
L = 26.5, W = 26.5, H = 25.2	

Stock No.	Manf Ref'	Type	Unit Price		
			1-24	25-99	100+
4952505	VF741F11S01	SPNO-12VDC	4.95	4.46	4.21
4952508	VF741H11	SPNO-24VDC	5.50	4.95	4.68

**VF7 Series, PCB Relay
70A, SP N/O**



Terminal Arrangements (bottom view)



Board Layout

PCB mounted SPNO high power relay for automotive applications featuring enhanced contacts for longer life. Robust and highly resistant to impact.

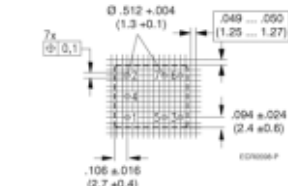
Contact arrangement	Single pole normally open
Contact material	Silver nickel
Continuous current max.	70A
Inrush current max.	120A
Brake current max.	70A (12V), derate by approx 50% for 24V dc
Nominal coil power	2.0 W at 23°C ambient
Coil resistance, ohm.	288
Allowable overdrive	36.2 Vdc at 23°C
Temperature	-40°C to + 125°C
Mechanical switching life	10 ⁷
L = 26.5, W = 26.5, H = 25.2	

Stock No.	Manf Ref'	Type	Unit Price		
			1-24	25-99	100+
4952502	VF711H12	SPCO-12VDC	5.07	4.56	4.31

**Mini K
15A, SPCO**



Terminal Arrangements (bottom view)



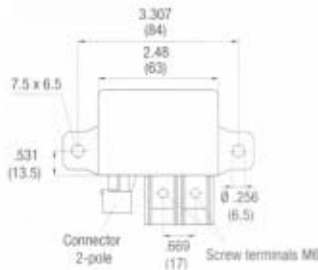
Board Layout

A miniature sealed automotive relay available typically used in immobiliser systems.

Contact arrangement	Single pole changeover
Contact material	Silver nickel
Continuous current	10A, N/O, 5A N/C at 12V dc
Contact load min	12V / 10mA, 20mV / 1mA gold flash or bifurcated
Operate / release time	1 ms / 1.5 ms
Nominal coil power	1.1W
Coil resistance.ohm	130 (12V dc), 520 (24V dc)
Mechanical life	10 Million
Dielectric strength	500V rms
Temperature	-40°C to + 85°C
Approvals	
L = 16.9, W = 14.7, H = 19.2	

Stock No.	Manf Ref'	Type	Unit Price		
			1-24	25-99	100+
4952424	V23072-C1061-A303	SPCO-12VDC	2.20	1.98	1.87
4952426	V23072-C1062-A303	SPCO-24VDC	2.20	1.98	1.87

**HCR High Current Relay
300A, 30Vdc N/O or C/O**

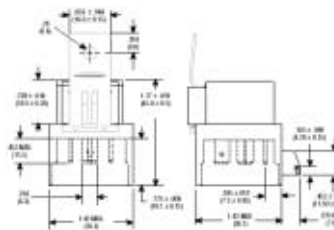


A high performance automotive relay capable of carrying 150A at a nominal 28V dc with a wide choice of options. A choice of standard Silver nickel contacts or Silver tin oxide for high inrush loads. Available as a 1 n/o (2 studs) or as a proper changeover (3 studs) and with optional IP67 waterproof sealing. Connections to coil are via Amp / tyco 2 way 1.5mm superseal connectors, except for the changeover version which is via 2 6.4mm spades from the side of the case.

- Contact arrangement 1 n/o or 1 n/c
- Contact material Silver nickel or silver tin oxide
- Continuous current n/o 150A silver nickel, 130A silver tin oxide
- Inrush current n/o 150A silver nickel, 300A silver tin oxide
- n/c changeover contact lower at 120A / 200A
- Contact load min 1A at 5V dc
- Coil power 3.3W at 23°C
- Coil resistance 43.5 ohms 12V, 178 ohms 24V
- Allowable overdrive 27V dc (12V dc), 54V dc (24V dc)
- Operate / Release time 25 ms / 8 ms
- Mechanical life 10 Million operations
- Dielectric strength 1000V rms
- Temperature -40°C to + 125°C
- Approvals
- L = 84, W = 65.2, H = 40

Stock No.	Manf Ref'	Type	Unit Price		
			1-24	25-99	100+
4954235	V23132-A2001-A100	SPNO-12VDC IP54 150A INRUSH	25.00	22.50	21.25
4954374	V23132-A2001-B100	SPNO-12VDC IP67 150A INRUSH	32.50	29.25	27.63
4954376	V23132-A2001-B200	SPNO-12VDC IP67 300A INRUSH	42.50	38.25	36.13
4954364	V23132-B2002-B100	SPNO-24VDC IP67 150A INRUSH	32.50	29.25	27.63
4954362	V23132-B2002-A200	SPNO-24VDC IP54 300A INRUSH	36.00	32.40	30.60

**VF4/V23134
60A Cube**

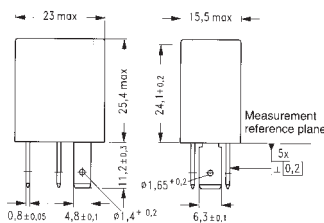
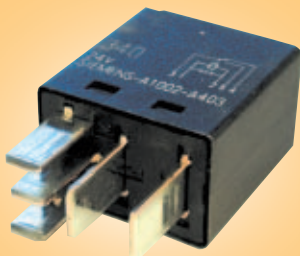


A single pole changeover plug in automotive relay with a waterproof shroud. Connection via 6.35mm terminals or waterproof connector. Resistor parallel to coil, 680ohm 12Vdc coil, 2700ohm 24Vdc coil.

- Contact arrangement Single pole changeover
- Contact material Silver nickel
- Continuous current 40A (N/O), 60A (N/C)
- Inrush current 45A (N/O), 120A (N/C)
- Coil power 1.6 W at 23°C
- Coil resistance 90 (12V dc), 360 (24V dc) plus resistor
- Allowable overdrive 20.2V dc (12V dc), 40.5V dc (24V dc)
- Operate / Release time 25 ms / 8 ms
- Mechanical life 10 Million operations
- Dielectric strength 1000V rms
- Temperature -40°C to + 125°C
- Approvals
- L = 26.5, W = 26.5, H = 25.2

Stock No.	Manf Ref'	Type	Unit Price		
			1-24	25-99	100+
4952981	VF4-61F11-S01	SPCO-12VDC	3.95	3.56	3.36
4952982	VF4-65H11-S08	SPCO-24VDC	3.95	3.56	3.36

**Micro Power Relay
12/6A, SPCO**

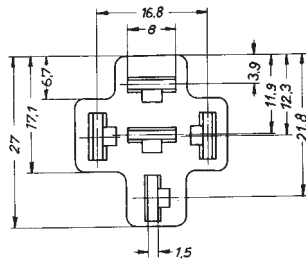


General purpose plug-in automotive relay with a suppression resistor. Standard ISO terminal footprint. Featuring silver tin oxide contacts.

- Contact arrangement Single pole changeover
- Contact material Silver tin oxide (for long life when switching capacitive loads)
- Continuous current max. 12A N/O, 6A N/C
- Inrush current max. 120A N/O, 40A N/C
- Nominal coil power 1.5 W
- Coil resistance, ohm. 441
- Max. coil voltage 39.4V at 23°C
- Operate / Release 6 ms / 3 ms
- Temperature -40°C to + 85°C
- Terminals 4.8mm (coil), 6.35mm (load)
- Mechanical switching life 10⁶
- L = 23, W = 15.5, H = 24.1

Stock No.	Manf Ref'	Type	Unit Price		
			1-24	25-99	100+
4954169	V23074-A1001-A403	SPCO-12VDC	2.50	2.25	2.15
4952433	V23074-A1002-A403	SPCO-24VDC	2.50	2.25	2.15

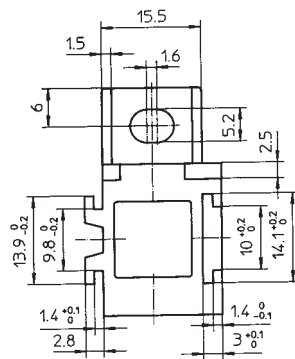
Harness Wired Relay Socket



Universal flying socket for F4 style relays and flasher units. Accepts 5 x 6.3mm terminals. Socket can be supplied packaged with 5 crimped terminals or individually.

Stock No.	Manf Ref'	Type	Unit Price		
			1-24	25-99	100+
9101033	0-729-02	SOCKET & CRIMPS	1.92	1.82	1.73
9101069	10485007	SOCKET ONLY	0.86	0.82	0.77

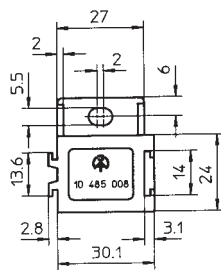
Flange Mounted Relay Socket for Micro Relays



Flange mounted socket for micro relays. Accepts 3 x 4.8mm and 2 x 6.3mm terminals. Sockets can be gang mounted and can be supplied packaged with 5 crimped terminals or individually.

Stock No.	Manf Ref'	Type	Unit Price		
			1-24	25-99	100+
9101036	0-729-03	SOCKET & CRIMPS	1.48	1.41	1.33
9691000	10700004	SOCKET ONLY	0.75	0.71	0.68

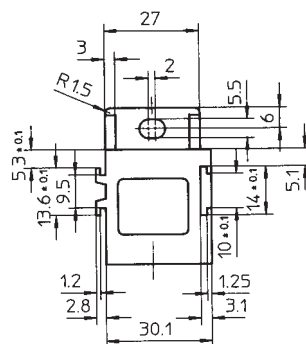
Flange Mounted Relay Socket for 40A Relays



Flange mounted socket for 40 amp relays. Accepts 4 x 2.8mm and 5 x 6.3mm terminals. Sockets can be gang mounted and can be supplied packaged with 5 crimped terminals or individually.

Stock No.	Manf Ref'	Type	Unit Price		
			1-24	25-99	100+
9101030	0-729-00	SOCKET & CRIMPS	1.92	1.82	1.73
9101072	10485008	SOCKET ONLY	0.96	0.91	0.86

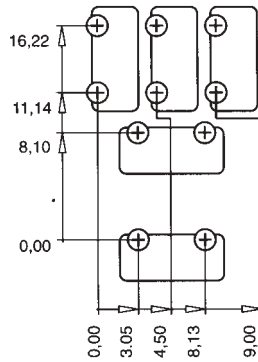
Flange Mounted Relay Socket for 70A Relays



Flange mounted socket for 70 amp relays. Accepts 4 x 2.8mm, 3 x 6.3mm and 2 x 9.5mm terminals. Sockets can be gang mounted and can be supplied packaged with 5 crimped terminals or individually.

Stock No.	Manf Ref'	Type	Unit Price		
			1-24	25-99	100+
9101075	0-729-01	SOCKET & CRIMPS	2.08	1.98	1.87
9691003	10700005	SOCKET ONLY	0.75	0.71	0.68

PCB Mounted Socket for Micro Relays



PCB Hole Layout

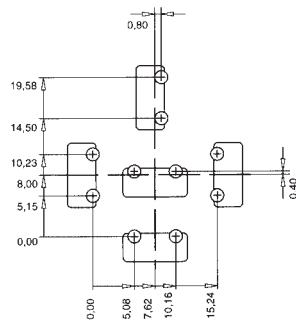
A PCB mounted relay base for use with micro style automotive relays. This product can also be press fitted onto the PCB (only for PTH boards with precise hole tolerancing).

Housing PA black
 Contacts Copper / plated with tin
 Temperature 130°C continuous use
 Rated current 30A / contact
 Rated voltage 32V / contact

Prepared hole diameters
 For press-fit 1.45mm ± 0.05
 For soldering 1.75mm ± 0.05

Stock No.	Manf Ref ¹	Type	Unit Price		
			1-24	25-99	100+
9821007	7461267	PCB SOCKET	0.70	0.67	0.63

PCB Mounted Socket for 40A Relays



PCB Hole Layout

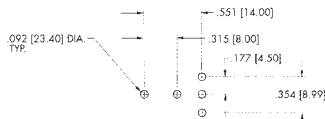
A PCB mounted relay base for use with 40A style automotive relays. This product can also be press fitted onto the PCB (only for PTH boards with precise hole tolerancing).

Housing PA black
 Contacts Copper / plated with tin
 Temperature 130°C continuous use
 Rated current 30A / contact
 Rated voltage 32V / contact

Prepared hole diameters
 For press-fit 1.45mm ± 0.05
 For soldering 1.75mm ± 0.05

Stock No.	Manf Ref ¹	Type	Unit Price		
			1-24	25-99	100+
9821010	7461270	PCB SOCKET	0.90	0.86	0.81

PCB Mounted Socket for Micro Relays



PCB Hole Layout

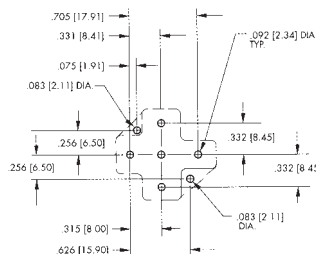
A PCB mounted relay base for use with micro style automotive relays.

Current rating 20A, limited by max. temperature
 Housing Heat stabilised thermoplastic
 Contacts Brass, bright tin plated
 Temperature 130°C continuous use

Prepared hole diameters 2.34mm

Stock No.	Manf Ref ¹	Type	Unit Price		
			1-24	25-99	100+
7770127	VR05-PCB	PCB SOCKET	0.70	0.67	0.63

PCB Mounted Socket for 40A Relays



PCB Hole Layout

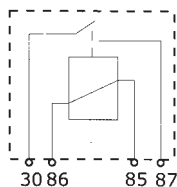
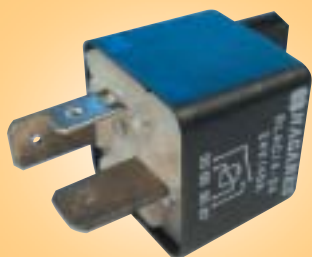
A PCB mounted relay base for use with 40A style automotive relays.

Current rating 20A, limited by max. temperature
 Housing Heat stabilised thermoplastic
 Contacts Brass, bright tin plated
 Temperature 130°C continuous use

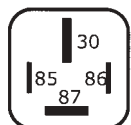
Prepared hole diameters 2.34mm

Stock No.	Manf Ref ¹	Type	Unit Price		
			1-24	25-99	100+
7770125	BR05-PCB-TK	PCB SOCKET	0.90	0.86	0.81

RL Series
70A, SP N/O



Wiring diagram (bottom view)



2 x 6.3 mm
2 x 9.5 mm

Connections

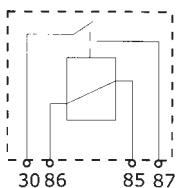
Low cost high power relay for automotive applications with SPNO contacts. 70A in a 12V version and 40A in a 24V version. Relay is available either with a plastic mounting bracket which is moulded into the relay cover and suitable for 5mm screw fixing (RLAC) or in a plug-in version (RLACS). 6.3mm push-on terminals for coil connection and 8mm push-on terminals for contact connection. Highly resistant to impact.

Contact arrangement Single pole normally open
Contact material Silver alloy
Continuous current max. 70A (12V), 40A (24V)

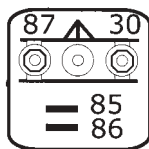
Note: Picture shows bracket mounted version

Stock No.	Manf Ref ¹	Type	Unit Price		
			1-24	25-99	100+
4751169	RLAC/4-12	12VDC BRACKET	4.13	3.72	3.51
4751175	RLAC/4-24	24VDC BRACKET	4.13	3.72	3.51
4751172	RLACS/4-12	12VDC PLUG-IN	4.13	3.72	3.51
4751178	RLACS/4-24	24VDC PLUG-IN	4.13	3.72	3.51

RL Series
80A, SP N/O



Wiring diagram (bottom view)



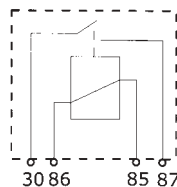
Connections

Low cost high power relay for automotive applications with SPNO contacts. Plastic mounting bracket for 5mm screws. 6.3mm push-on terminals for coil connection and 8mm push-on terminals for contact connection. Highly resistant to impact.

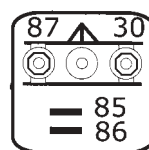
Contact arrangement Single pole normally open
Contact material Silver alloy
Continuous current max. 80A (24V)

Stock No.	Manf Ref ¹	Type	Unit Price		
			1-24	25-99	100+
4751184	RL/80-24	SPNO-24VDC	9.24	8.32	7.85

RL Series
180A, SP N/O



Wiring diagram (bottom view)



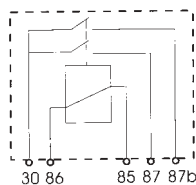
Connections

Low cost high power relay for automotive applications with SPNO contacts. Plastic mounting bracket for 5mm screws. 6.3mm push-on terminals for coil connection and 6mm stud terminals for contact connection. Highly resistant to impact.

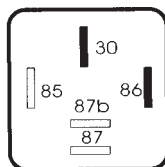
Contact arrangement Single pole normally open
Contact material Silver alloy
Continuous current max. 180A (12V)

Stock No.	Manf Ref ¹	Type	Unit Price		
			1-24	25-99	100+
4751181	RL/180-12	SPNO-12VDC	8.82	7.94	7.50

RDP Series
2 x 20A, DP N/O



Wiring diagram (bottom view)



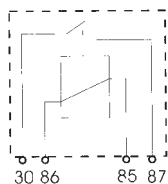
Connections

Low cost high power relay for automotive applications with DPNO contacts capable of switching 20A. 6.3mm push-on terminals for coil and contact connection. Highly resistant to impact.

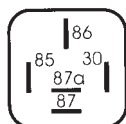
Contact arrangement Double pole normally open
Contact material Silver alloy
Continuous current max. 2 x 20A (12V)

Stock No.	Manf Ref ¹	Type	Unit Price		
			1-24	25-99	100+
4751040	RDPS/5-12	DPNO-12VDC	2.59	2.33	2.20

**RLP Series
40A, SP N/O**



Wiring diagram (bottom view)



4/5 x 6.3 mm

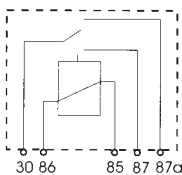
Connections

Low cost power relay for automotive applications with SPNO contacts capable of switching 40A at 12VDC or 22A at 24VDC. Plastic mounting bracket for 5mm screws. 6.3mm push-on terminals for coil and contact connection. Highly resistant to impact.

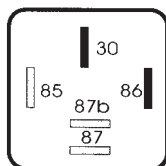
Contact arrangement Single pole normally open
Contact material Silver alloy
Continuous current max. 40A (12V), 22A (24V)

Stock No.	Manf Ref'	Type	Unit Price		
			1-24	25-99	100+
4751121	RLPA/4-12	SPNO-12VDC	1.51	1.36	1.28
4751127	RLPA/4-24	SPNO-24VDC	1.51	1.36	1.28

**RLP Series
40A, SPCO**



Wiring diagram (bottom view)



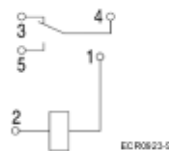
Connections

Low cost high power relay for automotive applications with SPCO contacts capable of switching 40A at 12VDC or 22A at 24VDC. Plastic mounting bracket for 5mm screws. 6.3mm push-on terminals for coil and contact connection. Highly resistant to impact.

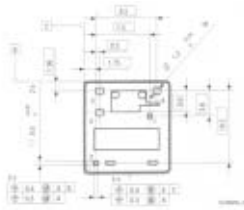
Contact arrangement Single pole changeover
Contact material Silver alloy
Continuous current max. 15A (N/C), 40A (N/O) 12V dc version
10A (N/C), 22A (N/O) 24V dc version

Stock No.	Manf Ref'	Type	Unit Price		
			1-24	25-99	100+
4751025	RLP/52-12	SPCO-12VDC	1.72	1.55	1.46
4751031	RLP/52-24	SPCO-24VDC	1.72	1.55	1.46

**Micro K
20/15A, SPCO**



Wiring diagram (bottom view)



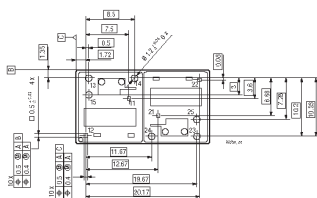
Board Layout

A high performance automotive relay capable of switching 20A in a very small package. Available surface mount or tht, changeover or N/O with option of silver tin contacts or silver nickel. Fully sealed package.

Contact arrangement Single pole changeover
Contact material Silver tin oxide
Continuous current 20A (N/O), 15 (N/C)
Contact load min. 0.5A at 12V dc
Operate / release time 3ms / 1.5ms
Nominal coil power 0.55W 27.2V dc allowable overdrive at 23°C
Coil resistance.ohm 254 (12V dc)
Mechanical life 5 Million
Dielectric strength 500V rms
Temperature -55°C to + 105°C
Approvals
L = 12.9, W = 12.9, H = 9.9

Stock No.	Manf Ref'	Type	Unit Price		
			1-24	25-99	100+
4954650	V23086-C1001-A403	SPCO-12VDC THT	1.70	1.53	1.45
4954652	V23086-M1011-A40	SPCO-12VDC SURFACE MT	2.75	2.48	2.34

**Double Micro K
40A, 2 x SPCO**



A high performance automotive relay which is essentially 2 single pole micro K relays in the same package each capable of switching 20A. Available surface mount or tht. Fully sealed package.

Contact arrangement Single pole changeover
Contact material Silver tin oxide
Continuous current 20A (N/O), 15 (N/C)
Contact load min. 0.5A at 12V dc
Operate / release time 3ms / 1.5ms
Nominal coil power 0.55W 27.2V dc allowable overdrive at 23°C
Coil resistance.ohm 254 (12V dc)
Mechanical life 5 Million
Dielectric strength 500V rms
Temperature -55°C to + 105°C
Approvals
L = 23.6, W = 12.9, H = 9.9

Stock No.	Manf Ref'	Type	Unit Price		
			1-24	25-99	100+
4954654	V23086-C2001-A4032 X	SPCO-12VDC THT	2.75	2.48	2.34