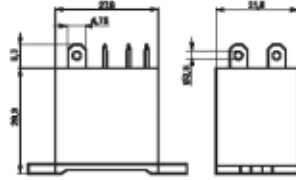


**PTF Series, Flange Mounted, 15A, DPCO**

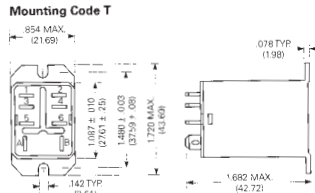


A compact flange mount DPCO relay with up to 15A capacity. Compact in size and ideal for installation where space is at a premium. 4.7mm push on connections.

|                        |   |
|------------------------|---|
| Contact arrangement    | Double pole changeover                      |
| Contact material       | Silver nickel                               |
| Continuous current     | 10A at 230V ac, 15A at 120V ac, max 400V ac |
| Contact load min       | 5V dc 100mA                                 |
| Operate / release time | 15ms / 10ms                                 |
| Nominal coil power     | dc 0.75 W, ac 1.0 VA                        |
| Coil resistance.ohm    | 777 (24Vdc), 192 (24Vac), 19465 (230Vac)    |
| Mechanical life        | 20 million dc, 15 million ac                |
| Dielectric strength    | 2500 Vrms (coil to contact)                 |
| Temperature            | -40°C to + 70°C                             |
| Approvals              | UL, VDE                                     |

| Stock No. | Manf Ref' | Type        | Unit Price |       |      |
|-----------|-----------|-------------|------------|-------|------|
|           |           |             | 1-24       | 25-99 | 100+ |
| 4954600   | PTF22024  | DPCO-24VDC  | 3.70       | 3.33  | 3.15 |
| 4954602   | PTF22524  | DPCO-24VAC  | 4.30       | 3.87  | 3.66 |
| 4954604   | PTF22730  | DPCO-230VAC | 4.30       | 3.87  | 3.66 |

**K10 Series, Flange Mounted, 15A, DPCO**

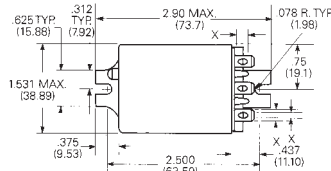


A flange mounted DPCO miniature relay with 15A capacity (mounting bracket is on the end of cover). Compact in size and ideal for installation where space is at a premium. 4.7mm push-on connections.

|                           |                                      |
|---------------------------|--------------------------------------|
| Contact arrangement       | 2 pole changeover                    |
| Contact material          | Silver cadmium oxide                 |
| Contact rating            | 15A at 120V ac, 10A at 30V dc        |
| Operate / release time    | 13ms / 6ms                           |
| Nominal coil power        | 0.9 W dc, 1.2 VA at 50 Hz ac approx. |
| Mechanical switching life | 10 <sup>7</sup>                      |
| Dielectric strength       | 1.5kV ac (coil-contact)              |
| Temperature               | -45°C to + 70°C                      |
| Terminals                 | 4.75mm push-on                       |
| Approvals                 | UL, CSA                              |

| Stock No. | Manf Ref'    | Type       | Unit Price |       |      |
|-----------|--------------|------------|------------|-------|------|
|           |              |            | 1-24       | 25-99 | 100+ |
| 4951551   | K10P11DT5-12 | DPCO-12VDC | 6.89       | 6.20  | 5.86 |

**KUP Series, Flange Mounted, 10A, DPCO**

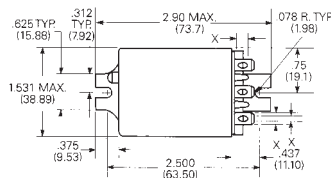


A flange mounted general purpose DPCO enclosed relay with 10A capacity.

|                           |                               |
|---------------------------|-------------------------------|
| Contact arrangement       | Double pole changeover        |
| Contact material          | Silver cadmium oxide          |
| Contact rating            | 10A at 240V ac, 10A at 28V dc |
| Operate / release time    | 15ms / 10ms                   |
| Nominal coil power        | 2 VA at 50 Hz ac approx.      |
| Mechanical switching life | 10 <sup>5</sup>               |
| Dielectric strength       | 2.2kV ac (coil-contact)       |
| Temperature               | -45°C to + 55°C (ac),         |
| Terminals                 | 4.75mm push-on                |
| Approvals                 | UL, CSA                       |

| Stock No. | Manf Ref'   | Type       | Unit Price |       |      |
|-----------|-------------|------------|------------|-------|------|
|           |             |            | 1-24       | 25-99 | 100+ |
| 4951968   | KUP11A55-12 | DPCO-12VAC | 6.76       | 6.08  | 5.75 |

**KUP Series, Flange Mounted, 10A, 3PCO**

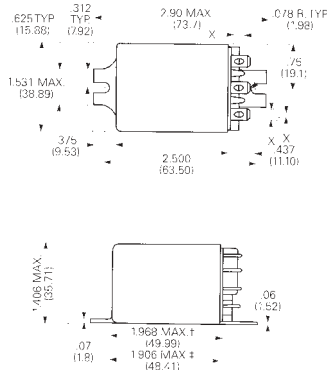


A flange mounted general purpose 3PCO enclosed relay with 10A capacity.

|                           |   |
|---------------------------|---|
| Contact arrangement       | 3 pole changeover                           |
| Contact material          | Silver cadmium oxide                        |
| Contact rating            | 10A at 240V ac, 10A at 28V dc               |
| Operate / release time    | 15ms / 10ms                                 |
| Nominal coil power        | 1.2 W (dc), 2 VA at 50 Hz ac approx.        |
| Mechanical switching life | 10 <sup>5</sup>                             |
| Dielectric strength       | 2.2kV ac (coil-contact)                     |
| Temperature               | -45°C to + 55°C (ac), -45°C to + 70°C (dc), |
| Terminals                 | 4.75mm push-on                              |
| Approvals                 | UL, CSA                                     |

| Stock No. | Manf Ref'    | Type        | Unit Price |       |      |
|-----------|--------------|-------------|------------|-------|------|
|           |              |             | 1-24       | 25-99 | 100+ |
| 4952064   | KUP14D55-24  | 3PCO-24VDC  | 6.94       | 6.25  | 5.90 |
| 4952022   | KUP14A55-24  | 3PCO-24VAC  | 7.58       | 6.82  | 6.44 |
| 4952028   | KUP14A55-48  | 3PCO-48VAC  | 7.71       | 6.94  | 6.55 |
| 4952019   | KUP14A55-120 | 3PCO-120VAC | 7.27       | 6.54  | 6.18 |
| 4952025   | KUP14A55-240 | 3PCO-240VAC | 7.71       | 6.94  | 6.55 |

**KUIP Series  
10A, DPCO**

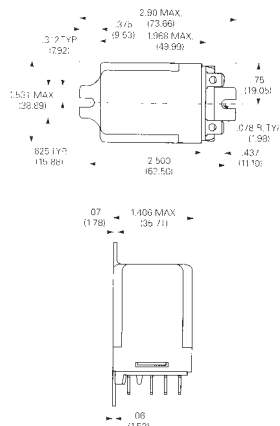


A flange mounted DPCO enclosed relay with a special insulation barrier to gain approval to VDE 0453. It has 8mm spacing between contacts and coil to satisfy needs for insulation between low voltage circuits and power circuits.

Contact arrangement Double pole changeover  
 Contact material Silver cadmium oxide  
 Contact rating 10A at 240V ac, 10A at 28V dc  
 Operate / release time 15ms / 10ms  
 Nominal coil power 1.2 W (dc)  
 Mechanical switching life 10<sup>5</sup>  
 Dielectric strength 2.2kV ac (coil-contact)  
 Temperature -45°C to + 95°C (dc),  
 Terminals 4.75mm push-on  
 Approvals UL, CSA

| Stock No. | Manf Ref <sup>1</sup> | Type       | Unit Price |       |       |
|-----------|-----------------------|------------|------------|-------|-------|
|           |                       |            | 1-24       | 25-99 | 100+  |
| 4951920   | KUIP11D55-24          | DPCO-24VDC | 12.75      | 11.48 | 10.84 |

**KUHP Series, Flange Mounted 20A, DPCO**

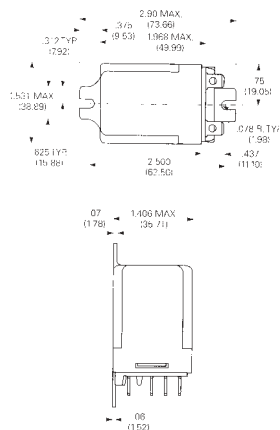


A flange mounted DPCO enclosed power relay with a 20 Amp switching capability.

Contact arrangement Double pole changeover  
 Contact material Silver cadmium oxide  
 Contact rating 20A at 240V ac, 20A at 28V dc  
 Operate / release time 20ms / 20ms  
 Nominal coil power 1.2 W (dc), 2.7VA at 50 Hz approx  
 Mechanical switching life 10<sup>7</sup>  
 Dielectric strength 3.75kV ac (coil-contact)  
 Temperature -45°C to + 45°C (ac), -45°C to + 70°C (dc)  
 Terminals 6.35mm push-on  
 Approvals UL, CSA

| Stock No. | Manf Ref <sup>1</sup> | Type        | Unit Price |       |      |
|-----------|-----------------------|-------------|------------|-------|------|
|           |                       |             | 1-24       | 25-99 | 100+ |
| 4951902   | KUHP11D51-12          | DPCO-12VDC  | 8.25       | 7.43  | 7.01 |
| 4951905   | KUHP11D51-24          | DPCO-24VDC  | 8.25       | 7.43  | 7.01 |
| 4951908   | KUHP11A51-240         | DPCO-240VAC | 8.55       | 7.70  | 7.27 |

**KUHP Series, Flange Mounted, 30A, SPCO**

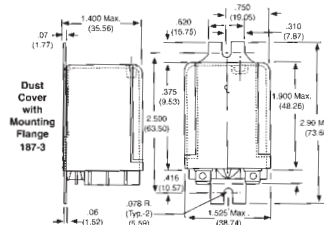


A flange mounted SPCO enclosed power relay with a 30 Amp switching capability.

Contact arrangement Single pole changeover  
 Contact material Silver cadmium oxide  
 Contact rating 30A at 240V ac, 25A at 28V dc  
 Operate / release time 20ms / 20ms  
 Nominal coil power 1.2 W (dc), 2.7VA at 50 Hz approx  
 Mechanical switching life 10<sup>7</sup>  
 Dielectric strength 3.75kV ac (coil-contact)  
 Temperature -45°C to + 45°C (ac), -45°C to + 70°C (dc)  
 Terminals 6.35mm push-on  
 Approvals UL, CSA

| Stock No. | Manf Ref <sup>1</sup> | Type        | Unit Price |       |      |
|-----------|-----------------------|-------------|------------|-------|------|
|           |                       |             | 1-24       | 25-99 | 100+ |
| 4951911   | KUHP5D51-12           | SPCO-12VDC  | 8.25       | 7.43  | 7.01 |
| 4951914   | KUHP5D51-24           | SPCO-24VDC  | 8.25       | 7.43  | 7.01 |
| 4951910   | KUHP5A51-240          | SPCO-240VAC | 11.37      | 10.23 | 9.66 |

**187 Series, Flange Mounted, 20A, DPCO**

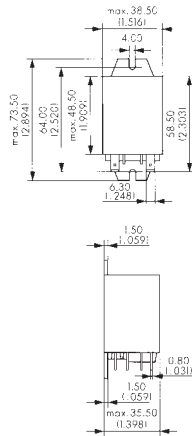


A flange mounted DPCO enclosed power relay with a 20 Amp switching capability.

Contact arrangement Double pole changeover  
 Contact material Silver cadmium oxide  
 Contact rating 20A at 277V ac, 20A at 28V dc  
 Operate / release time 20ms / 10ms  
 Nominal coil power 1.2 W (dc), 2.7VA at 50 Hz approx  
 Mechanical switching life 10<sup>7</sup>  
 Dielectric strength 2.5kV ac (coil-contact)  
 Temperature -45°C to + 45°C (ac), -45°C to + 70°C (dc)  
 Terminals 6.35mm push-on  
 Approvals UL, CSA

| Stock No. | Manf Ref <sup>1</sup> | Type       | Unit Price |       |      |
|-----------|-----------------------|------------|------------|-------|------|
|           |                       |            | 1-24       | 25-99 | 100+ |
| 9801048   | 187-32C200            | DPCO-24VDC | 9.23       | 8.31  | 7.85 |

**RM Series  
25A, DPCO**

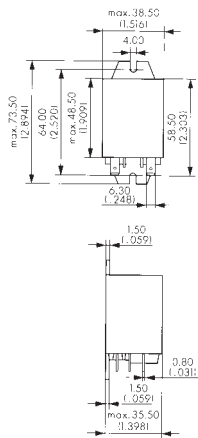
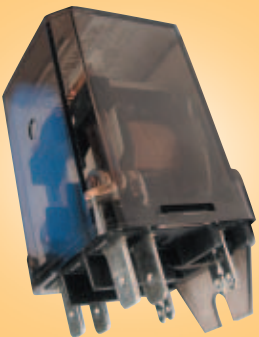


A flange mounted DPCO relay with a continuous current rating of 25A at 250Vac. Enclosed in a clear dust cover. Suitable for direct control of squirrel-cage motors, control of water heaters, night storage heaters and electrical appliances.

Contact arrangement Double pole changeover  
 Contact material Silver cadmium oxide  
 Contact rating 25A at 250V ac  
 Operate / release time 15ms / 15ms  
 Nominal coil power 1.2 W (dc), 2.8VA  
 Coil resistance ohm 110 (12V), 475 (24V), 7500 (230V)  
 Mechanical switching life  $10 \times 10^6$   
 Dielectric strength 2.5kV ac (coil-contact)  
 Temperature -45°C to + 60° (DC), -45°C to + 40° (AC)  
 Terminals 6.3 mm push-on  
 Approvals UL, CSA

| Stock No. | Manf Ref' | Type        | Unit Price |       |      |
|-----------|-----------|-------------|------------|-------|------|
|           |           |             | 1-24       | 25-99 | 100+ |
| 4952781   | RM805012  | DPCO-12VDC  | 8.00       | 7.20  | 6.80 |
| 4952782   | RM805024  | DPCO-24VDC  | 8.00       | 7.20  | 6.80 |
| 4952784   | RM805730  | DPCO-230VAC | 8.50       | 7.65  | 7.23 |

**RM Series  
30A, N/O & N/C**

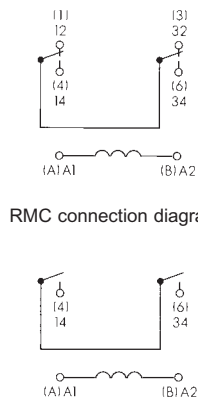


A flange mounted power relay with 1 N/O and 1 N/C contacts capable of switching 30A at 380Vac. Enclosed in a clear dust cover. Suitable for direct control of squirrel-cage motors, control of water heaters, night storage heaters and electrical appliances. **Note:** Can be used as a true changeover relay with the correct wiring modification.

Contact arrangement 1 N/O and 1 N/C  
 Contact material Silver cadmium oxide  
 Contact rating 30A at 380V ac  
 Operate / release time 17ms / 18ms  
 Nominal coil power 1.2 W (dc), 2.8VA  
 Coil resistance ohm 110 (12V), 475 (24V), 7500 (230V)  
 Mechanical switching life  $10 \times 10^6$   
 Dielectric strength 2.5kV ac (coil-contact)  
 Temperature -45°C to + 60° (DC), -45°C to + 40° (AC)  
 Terminals 6.3 mm push-on  
 Approvals UL, CSA

| Stock No. | Manf Ref' | Type         | Unit Price |       |      |
|-----------|-----------|--------------|------------|-------|------|
|           |           |              | 1-24       | 25-99 | 100+ |
| 4952844   | RMC05012  | NO/NC-12VDC  | 8.60       | 7.74  | 7.31 |
| 4952847   | RMC05024  | NO/NC-24VDC  | 8.60       | 7.74  | 7.31 |
| 4952850   | RMC05730  | NO/NC-230VAC | 9.02       | 8.12  | 7.67 |

**RM Series  
30A, SP N/O**



RMC connection diagram

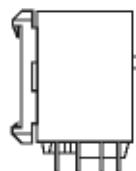
RMD connection diagram

A flange mounted power relay with SPNO contacts offering a capable of switching 30A at 380Vac. Enclosed in a clear dust cover. Suitable for direct control of squirrel-cage motors, control of water heaters, night storage heaters and electrical appliances.

Contact arrangement Single pole normally open  
 Contact material Silver cadmium oxide  
 Contact rating 30A at 380V ac  
 Operate / release time 17ms / 18ms  
 Nominal coil power 1.2 W (dc), 2.8VA  
 Coil resistance ohm 110 (12V), 475 (24V), 7500 (230V)  
 Mechanical switching life  $10 \times 10^6$   
 Dielectric strength 2.5kV ac (coil-contact)  
 Dimensions As per RMC relay  
 Temperature -45°C to + 60° (DC), -45°C to + 40° (AC)  
 Terminals 6.3 mm push-on  
 Approvals UL, CSA

| Stock No. | Manf Ref' | Type        | Unit Price |       |      |
|-----------|-----------|-------------|------------|-------|------|
|           |           |             | 1-24       | 25-99 | 100+ |
| 4952853   | RMD05012  | SPNO-12VDC  | 8.63       | 7.77  | 7.34 |
| 4952856   | RMD05024  | SPNO-24VDC  | 8.53       | 7.68  | 7.25 |
| 4952859   | RMD05730  | SPNO-230VAC | 8.94       | 8.05  | 7.60 |

**RM Series DiN Option  
25A, DPCO**

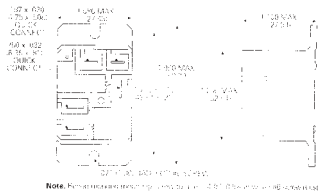


A 2 pole changeover power relay with an integrated snap on DIN rail latch (horizontal). Connections via 6.35mm spades.

Contact arrangement Double pole changeover  
 Contact material Silver cadmium oxide  
 Continuous current 25A at 230V ac  
 Contact load min  
 Operate / release time 15ms / 10ms  
 Nominal coil power dc coil, 1.2 W, ac 2.8VA  
 Coil resistance.ohm 7500 (230V ac)  
 Mechanical life 20 Million  
 Dielectric strength 2500Vrms (coil to contact)  
 Temperature -45°C to +40°C (Ac coil), -45°C to +60°C (Dc coil)  
 Approvals UL, VDE

| Stock No. | Manf Ref' | Type                  | Unit Price |       |      |
|-----------|-----------|-----------------------|------------|-------|------|
|           |           |                       | 1-24       | 25-99 | 100+ |
| 4954331   | RM809730  | DPCO-230VAC DIN MOUNT | 9.00       | 8.10  | 7.65 |

**T9A Series, Flange Mounted, 20A, SPCO**



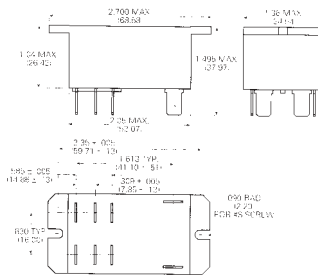
Note: Refer to the drawing for the correct pin configuration and terminal locations.

A flange mounted SPCO enclosed power relay with a 20 Amp switching capability. Load connections made via 6.35mm push-on terminals and safety wells will accept insulated female connectors. Particularly suitable for various industrial, commercial and residential applications.

- Contact arrangement Single pole changeover
- Contact material Silver cadmium oxide
- Contact rating N/O 20A at 240V ac, 20A at 28V dc
- Contact rating N/C 10A at 240V ac, 10A at 28V dc
- Operate / release time 15ms / 15ms
- Nominal coil power 1.0 W approx
- Mechanical switching life  $10^5$
- Dielectric strength 2.5kV ac (coil-contact)
- Temperature -55°C to + 85°C
- Terminals 6.35mm push-on
- Approvals UL, CSA

| Stock No. | Manf Ref <sup>1</sup> | Type       | Unit Price |       |      |
|-----------|-----------------------|------------|------------|-------|------|
|           |                       |            | 1-24       | 25-99 | 100+ |
| 4952367   | T9AP5D52-12           | SPCO-12VDC | 3.31       | 2.98  | 2.81 |
| 4952370   | T9AP5D52-24           | SPCO-24VDC | 3.31       | 2.98  | 2.81 |
| 4952373   | T9AP5D52-48           | SPCO-48VDC | 3.31       | 2.98  | 2.81 |

**T92 Series, Flange Mounted, 30A, DP N/O**

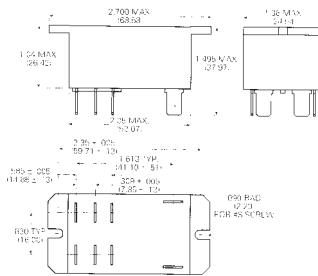


A flange mounted DP enclosed power relay with N/O contacts and a 30 Amp switching capability.

- Contact arrangement Normally open
- Contact material Silver cadmium oxide
- Contact rating 30A at 120/277V ac, 20A at 28V dc
- Operate / release time 15ms / 10ms
- Nominal coil power 1.7 W
- Mechanical switching life  $5 \times 10^6$
- Dielectric strength 4kV ac (coil-contact)
- Temperature -40°C to + 85°C
- Terminals 6.35mm push-on
- Approvals UL, CSA

| Stock No. | Manf Ref <sup>1</sup> | Type          | Unit Price |       |      |
|-----------|-----------------------|---------------|------------|-------|------|
|           |                       |               | 1-24       | 25-99 | 100+ |
| 4952343   | T92P7D22-12           | DP N/O-12VDC  | 6.60       | 5.94  | 5.61 |
| 4954105   | T92P7A22-115          | DP N/O-115VAC | 7.00       | 6.30  | 5.95 |
| 4954103   | T92P7A22-230          | DP N/O-230VAC | 7.00       | 6.60  | 5.95 |

**T92 Series, Flange Mounted, 30A, DPCO, Sealed**



A flange mounted DPCO power relay with a 30 Amp switching capability. Fully sealed for immersion cleaning.

- Contact arrangement Double pole changeover
- Contact material Silver cadmium oxide
- Contact rating 30A at 120/277V ac, 20A at 28V dc
- Contact rating Normally open contact rated at 3A
- Operate / release time 15ms / 10ms
- Nominal coil power 1.7 W
- Mechanical switching life  $5 \times 10^6$
- Dielectric strength 4kV ac (coil-contact)
- Temperature -40°C to + 65°C
- Terminals 6.35mm push-on
- Approvals UL, CSA

| Stock No. | Manf Ref <sup>1</sup> | Type        | Unit Price |       |      |
|-----------|-----------------------|-------------|------------|-------|------|
|           |                       |             | 1-24       | 25-99 | 100+ |
| 4952355   | T92S11D22-12          | DPCO-12VDC  | 7.25       | 6.53  | 6.16 |
| 4952358   | T92S11D22-24          | DPCO-24VDC  | 7.25       | 6.53  | 6.16 |
| 4952346   | T92S11A22-120         | DPCO-120VAC | 8.05       | 7.25  | 6.84 |
| 4952349   | T92S11A22-240         | DPCO-240VAC | 8.05       | 7.25  | 6.84 |

Tolerance: +0.1

7.62 5.08 5.08

1.3)



(1.2)