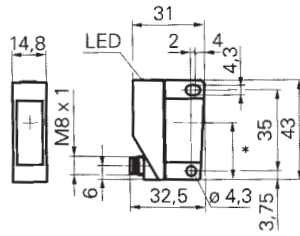








20...350mm Diffuse DC  
0...5m Reflex DC  
0...12m Through Beam DC

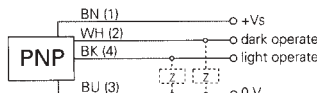
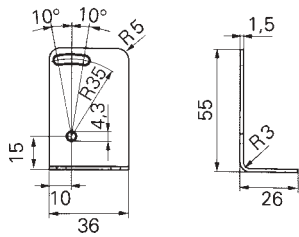


Three DC sensors, a diffuse model with background suppression, a reflex model with polarising filter and a through beam with test input, all offering high range, precision sensing. The diffuse and reflex sensors feature a visible sensing beam (red dot) to aid alignment/set-up. The reflex sensor has a Polarising filter for detection of reflecting objects.. These low cost, compact sensors, housed in impact resistant plastic feature and a 10 turn mechanical adjustment on the diffuse, N/O or N/C transistor outputs, short circuit & reverse polarity protection. These sensors are excellent for applications in packaging machines, warehousing, conveying technology and textile industries as well as special machine builders.

Nominal sensing range	20...350mm Diffuse background suppression 0...5m Reflex 0...12m Through beam
Supply voltage	10-30 volt DC
Temperature	-25 to + 65°C
Frequency	1000 Hz, all models
Sensitivity adjustment	10 turn mechanical adjustment, diffuse Fixed, reflex
Built in LED's	Yellow/output indicator, flashing/alignment aid, soiled lens indicator
IP Rating	IP67
Body material	Impact resistant plastic
Connection type	M8 connector, 4 wire type (brown/+ve, black/light operate white/dark operate, blue/-ve)
Connection type, emitter	M8 connector, 4 wire type (brown/+ve, black/test output white/unused, blue/-ve)

Mounting Bracket

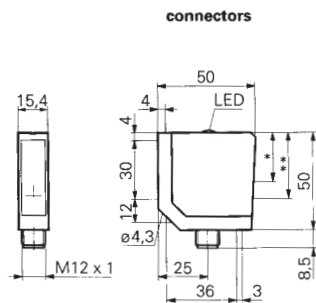
Connection Diagram



Reflex sensors must be used with suitable reflectors, Spares can be supplied upon request, please enquire. For mounting brackets, please order separately

Stock No.	Manufactures Ref'	Sensor Type	Output Type	Range	Unit Price		
					1-4	5-9	10-24
1501757	FHDK14P5101/S35A	DIFFUSE (BACKGROUND SUPP)	PNP NO/NC	20...350MM	60.61	58.79	56.97
1501760	FDPK14P5101/S35A	REFLEX (Polarising FILTER)	PNP NO/NC	0...5M	52.53	50.95	49.38
1501763	FEDK14P5101/S35A	THROUGH BEAM RECEIVER	PNP NO/NC	0..12M	46.46	45.07	43.67
1501766	FSDK14D9601/S35A	THROUGH BEAM EMITTER		0..12M	31.31	30.37	29.43
1501769	134964	MOUNTING BRACKET			3.79	3.68	3.56

20...450mm Diffuse DC  
0...4m Reflex DC  
Clear Object Sensor

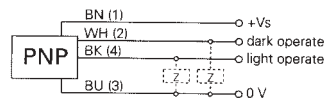
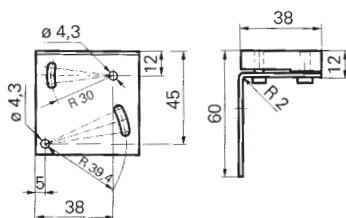


Two DC sensors, a diffuse model with background suppression and a reflex model with polarising filter both offering high range, precision sensing. The diffuse sensor is housed in rugged die-cast zinc metal offers a fully adjustable sensing range with a 5 turn mechanical adjustment. The reflex sensor also housed in rugged die-cast zinc metal features teach-in sensitivity adjustment and is an excellent detector of all objects including high transparents such as glass and PET bottles. Both sensors offer a visible sensing beam (red dot) to aid alignment/set-up.

Nominal sensing range	20...450mm Diffuse background suppression 0...4m Reflex
Supply voltage	10-30 volt DC
Temperature	-25 to + 65°C
Frequency	1000 Hz, diffuse 400 Hz, reflex
Sensitivity adjustment	5 turn mechanical adjustment, Diffuse Teach-in, Reflex
Built in LED's	Yellow/output indicator
IP Rating	IP67
Body material	Die-cast zinc
Connection type	Diffuse M12 connector, 4 wire type (brown/+ve, black/light operate white/dark operate, blue/-ve)
Reflex	M12 connector, 4 wire type (brown/+ve, black/dark operate white/teach input, blue/-ve)

Mounting Bracket

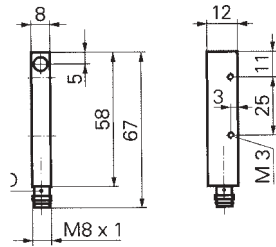
Connection Diagram



Reflex sensors must be used with suitable reflectors, Spares can be supplied upon request, please enquire. For mounting brackets, please order separately

Stock No.	Manufactures Ref'	Sensor Type	Output Type	Range	Unit Price		
					1-4	5-9	10-24
1501772	FHDM16P5001/S14A	DIFFUSE (BACKGROUND SUPP)	PNP NO/NC	20...450MM	112.12	108.76	105.39
1501775	FPDM16P3921/S14	REFLEX (Polarising FILTER)	PNP NO/NC	0...4M	191.92	186.16	180.40
1501778	119373	MOUNTING BRACKET			47.68	46.25	44.82

0...7m Through Beam DC Sub-miniature

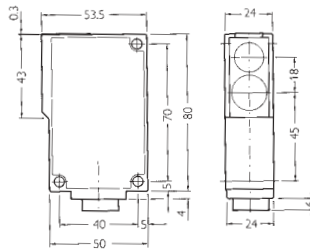


A through beam DC sensor in a subminiature housing offering an advantage over slot sensors because the light is pulsed therefore enhancing insensitivity to lights levels. Transmitter and receiver are ordered separately.

Nominal sensing range 700mm  
 Supply voltage 10-30 volt DC  
 Rated output current 100 mA  
 Temperature -25 to + 65°C  
 Frequency 400 Hz  
 Built in LED red/output indicator  
 Body material Anodised aluminium  
 Connection type receiver M8 connector, 3 wire type (brown/+ve, black/dark operate, blue/-ve)  
 Connection type emitter M8 connector, 3 wire type (brown/+ve, black/unused, blue/-ve)  
 IP Rating IP65

Stock No.	Manf Ref'	Type	Unit Price		
			1-4	5-9	10-24
1501019	FEDM08P3001/S35L	PNP NO/NC	96.77	93.87	90.96
1501052	FSDM08D9001/S35L	EMITTER	39.09	37.92	36.74

100...1500mm Diffuse DC

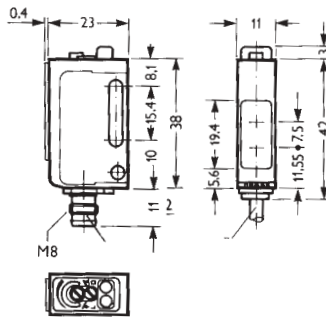


A standard block style sensor in the NPN or PNP diffuse version with background suppression. This sensor has potentiometer adjustment calibration with light-on/dark-on switching outputs and a selectable timing delay function. Short circuit & reverse polarity protected.

Nominal sensing range 100...1500 mm  
 Supply voltage 10-30 volt DC  
 Rated output current 100 mA  
 Temperature -40 to + 60 °C  
 Frequency 1000 Hz  
 Sensitivity adjustment Potentiometer  
 Built in LED's Yes (signal strength/alignment)  
 Body material Glass-fibre reinforced plastic  
 Connector type, Connector, 6 pin type, supplied (P1/+ve, P2/-ve, P3/not used, P4/NO output, P5/NC output, P6/test input)  
 IP Rating IP67

Stock No.	Manf Ref'	Type	Unit Price	
			1+	10+
3801124	WT272N610	NPN NO/NC	139.40	
3801127	WT272P610	PNP NO/NCxx	139.40	
3801201	2009122	MOUNTING BKT	8.59	

Small Sensor, 2M Range, Potentiometer Adjustment

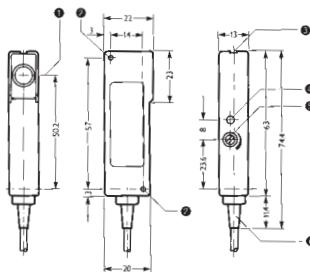


A small DC sensor, ideal for tight spaces, in the NPN reflex version. This sensor has 2 turn potentiometer adjustment calibration and features Polarising filters for reliable detection of clear & shiny objects. Short circuit & reverse polarity protected.

Nominal sensing range 2 mtr  
 Supply voltage 10-30 volt DC  
 Rated output current 100 mA  
 Temperature -25 to + 55 °C  
 Frequency 550 Hz  
 Sensitivity adjustment Potentiometer, 2 turn  
 Built in LED's Yes (Red/function)  
 IP Rating IP67  
 Body material Glass-fibre reinforced plastic  
 Approvals UL  
 Connection type, M8 connector, 4 wire type (brown/+ve, black/NPN NO/NC output, white/alarm output, blue/-ve)

Stock No.	Manf Ref'	Type	Unit Price	
			1+	10+
3801049	WL160N440	NPN NO/NC	79.06	

Slim-line Sensor, 2.5M Range, Potentiometer Adjustment



- Centre of optical axis
- Mounting holes, I.D. 3.2 mm
- Alignment sight
- Signal strength indicator
- Sensitivity control
- Connecting cable, 2m long
- M12 plug, 4-pin

A slim-line DC sensor, ideal for tight spaces, in the NPN reflex version. This sensor has potentiometer adjustment calibration and features polarising filters for reliable detection of clear & shiny objects. Complimentary switching outputs. Short circuit & reverse polarity protected.

Nominal sensing range 2.5 mtr  
 Supply voltage 10-30 volt DC  
 Rated output current 100 mA  
 Temperature -25 to + 55 °C  
 Frequency 1000 Hz  
 Sensitivity adjustment Potentiometer  
 Built in LED's Yes (signal strength)  
 IP Rating IP67  
 Body material Glass-fibre reinforced plastic  
 Connection type, Pre-wired 4 core (0.25mm $\Rightarrow$ ) PVC cable, 2M (red/+ve, grey/NPN NO output, orange/NC output, blue/-ve)

Stock No.	Manf Ref'	Type	Unit Price	
			1+	10+
3801082	WL9-2N132	NPN NO/NC	96.00	
3801204	4033146	MOUNTING BKT	2.54	