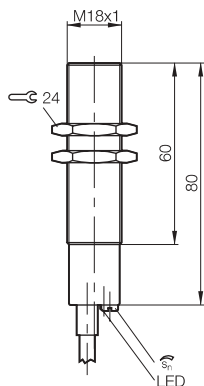


M18, 1...10mm Sensing, DC



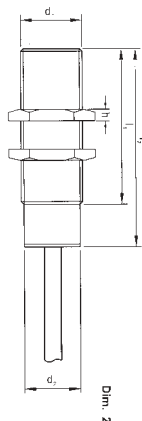
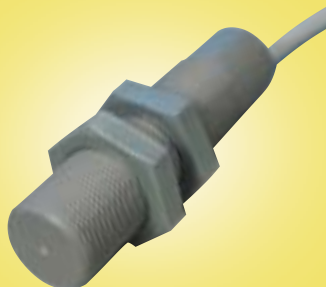
A DC non flush mounted capacitive sensor designed to sense virtually any material, from metals to oil, in a industry standard M18 housing. Featuring short circuit & reverse polarity protection.

Thread size	M18 (non flush)
Nominal sensing range	1...10mm
Supply voltage	10-30 volt DC
Rated output current	250 mA at 20°C, 175 mA at 70°C
Off-state current	< 50 µAmp
Temperature	-25 to +70°C
Frequency	< 400 Hz
Built in LED	Yes
IP Rating	IP65
Body material	PBTP
Connection type	Pre-wired 3 core (0.34mm=) PVC cable, 3M (brown/+ve, black/output, blue/-ve)

Note: Non flush mounting capacitive sensors must protrude it's own diameter for correct operation.

Stock No.	Manf Ref'	Type	Unit Price		
			1-4	5-9	10-24
2667821	BCS018PS1C03	PNP N/O	41.13	39.90	38.66
2667818	BCS018PO1C03	NPN N/O	41.13	39.90	38.66

M18, 1...8mm Sensing, DC



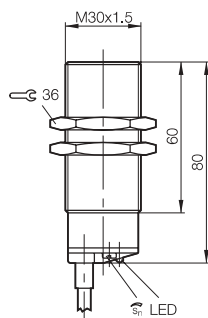
A DC flush mounted capacitive sensor designed to sense virtually any material, from metals to oil, in a industry standard M18 housing. Featuring short circuit, overload & reverse polarity protection.

Thread size	M18 (flush)
Nominal sensing range	1...8mm
Supply voltage	10-35 volt DC
Rated output current	400 mA
Off-state current	15 mA
Temperature	-25 to +70°C
Frequency	800 Hz
Built in LED	Yes
IP Rating	IP67
Body material	Plastic/glass fibre reinforced
Connection type	Pre-wired 4 core (0.34mm=) PVC cable, 2M (brown/+ve, black/output, white/output, blue/-ve)

d1= M18x1, d2= 17, l1= 55, l2= 70, h= 5

Stock No.	Manf Ref'	Type	Unit Price		
			1-4	5-9	10-24
9561000	KAS0A13AK	PNP NO+NC	75.16	73.66	72.15

M30, 2...20mm Sensing, DC



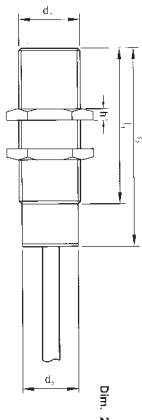
A DC non flush mounted capacitive sensor designed to sense virtually any material, from metals to oil, in a industry standard M30 housing. Featuring short circuit & reverse polarity protection.

Thread size	M30 (non flush)
Nominal sensing range	2...20mm
Supply voltage	10-30 volt DC
Rated output current	250 mA at 20°C, 175 mA at 70°C
Off-state current	< 50 µAmp
Temperature	-25 to +70°C
Frequency	< 250 Hz
Built in LED	Yes
IP Rating	IP65
Body material	PBTP
Connection type	Pre-wired 3 core (0.34mm=) PVC cable, 3M (brown/+ve, black/output, blue/-ve)

Note: Non flush mounting capacitive sensors must protrude it's own diameter for correct operation.

Stock No.	Manf Ref'	Type	Unit Price		
			1-4	5-9	10-24
2667827	BCS030PS1C03	PNP N/O	43.33	42.03	40.73
2667824	BCS030PO1C03	NPN N/O	43.33	42.03	40.73

M30, 2...20mm Sensing, DC



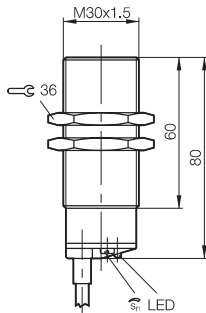
A DC flush mounted capacitive sensor designed to sense virtually any material, from metals to oil, in a industry standard M30 housing. Featuring short circuit, overload & reverse polarity protection.

Thread size	M30 (flush)
Nominal sensing range	2...20mm
Supply voltage	10-35 volt DC
Rated output current	400 mA
Off-state current	15 mA
Temperature	-25 to +70°C
Frequency	800 Hz
Built in LED	Yes
IP Rating	IP67
Body material	Plastic/glass fibre reinforced
Connection type	Pre-wired 4 core (0.34mm=) PVC cable, 2M (brown/+ve, black/output, white/output, blue/-ve)

d1= M30x1.5, d2= 28, l1= 55, l2= 70, h= 5

Stock No.	Manf Ref'	Type	Unit Price		
			1-4	5-9	10-24
9561009	KAS0A14AK	PNP NO+NC	78.44	76.87	75.30

M30, 2...20mm Sensing AC



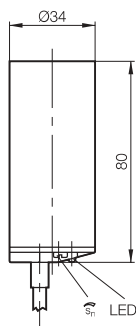
An AC non flush mounted capacitive sensor designed to sense virtually any material, from metals to oil, in a industry standard M30 housing. Featuring short circuit & reverse polarity protection.

Housing Size	Ø 34mm (non flush)
Nominal sensing range	3...40mm
Supply voltage	10-30 volt DC
Rated output current	250 mA at 20°C, 175 mA at 70°C
Off-state current	< 50 µAmp
Temperature	-25 to +70°C
Frequency	< 250 Hz
Built in LED	Yes
IP Rating	IP65
Body material	PBTP
Connection type	Pre-wired 2 core (0.34mm≈) PVC cable, 3M (brown/live, blue/neutral)

Note: Non flush mounting capacitive sensors must protrude it's own diameter for correct operation.

Stock No.	Manf Ref'	Type	Unit Price		
			1-4	5-9	10-24
2667830	BCS030WS5L03	AC N/O	57.76	56.03	54.29

M34, 3...40mm Sensing DC



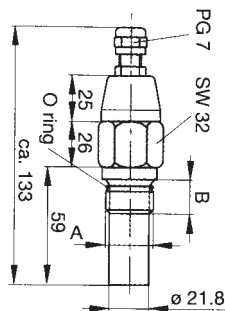
A DC non flush mounted capacitive sensor in a smooth barrelled 34mm diameter body, designed to sense virtually any material, from metals to oil. Featuring short circuit & reverse polarity protection.

Housing Size	Ø 34mm (non flush)
Nominal sensing range	3...40mm
Supply voltage	10-30 volt DC
Rated output current	250 mA at 20°C, 175 mA at 70°C
Off-state current	< 50 µAmp
Temperature	-25 to +70°C
Frequency	< 250 Hz
Built in LED	Yes
IP Rating	IP65
Body material	PBTP
Connection type	Pre-wired 3 core (0.34mm≈) PVC cable, 3M (brown/+ve, black/output, blue/-ve)

Note: Non flush mounting capacitive sensors must protrude it's own diameter for correct operation. Clamping cuff is included.

Stock No.	Manf Ref'	Type	Unit Price		
			1-4	5-9	10-24
2667833	BCS034PS1Y03	PNP N/O	50.40	48.89	47.38

Level Sensor NR160
Granules, Liquids & Powder



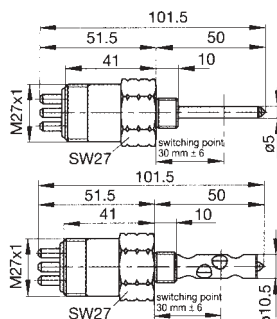
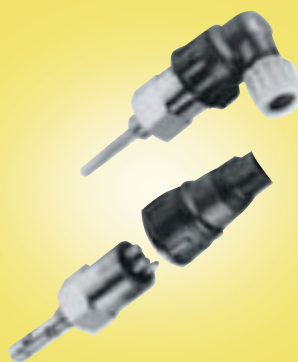
A = 3/4 NPT, B = 21

A capacitive level sensor designed to monitor liquids and powders with high relative dielectric constant. Min/Max selection for switching when covered or uncovered by medium. Switch is supplied without cable but cable can be supplied in various lengths up to 300m. Please consult sales.

Thread size	3/4" NPT
Supply voltage	9-36 volt DC
Rated output current	300 mA
Off-state current	17 mA max.
Temperature	-20 to +125°C
Oscillation frequency	500 kHz
Response time	0.1sec
Built in LED	Status indication by 2 LED's
Housing / probe material	Stainless steel / polyamide with glass fibre)
Max. cable length	300m, not supplied
IP Rating	IP65

Stock No.	Manf Ref'	Type	Unit Price		
			1-4	5-9	10-24
4100856	NR160-DC9-36V-3/4NPT-A2	PNP	182.03	168.38	163.83

Level Sensor NR 60
Water, Oils & Fuel



Capacitive level sensors designed to monitor either water or oils and fuel. Normally closed output switches when uncovered by medium. Connection to switch is made by bayonet connector, please order separately.

Thread size	M14 x 1.5
Output	NPN, low side switching
Supply voltage	9-36 volt DC
Voltage drop	< 300mA
Rated output	12W (12VDC), 24W (24VDCV)
Off-state current	6 mA approx.
Temperature	-30 to +125°C
Oscillation frequency	500 kHz
Response time	7sec (min sensor), 2 (max sensor)
Housing / probe material	Nickel plated brass / ETFE
Max. cable length	300m, not supplied, observe volt drop
IP Rating	IP67

Stock No.	Manf Ref'	Type	Unit Price		
			1-4	5-9	10-24
4100859	NR60-W-DC9-36-M14-MIN-B	WATER	65.08	60.20	58.57
4100862	NR60-F-DC9-36-M14-MIN-B	FUEL	69.20	64.01	62.28
4100865	OZ051Z003010	CONNECTOR	19.19	17.75	17.27

< 21